



FAIRBANKS NORTH STAR BOROUGH SCHOOL DISTRICT

520 Fifth Ave. Fairbanks, AK 99701 (907) 452-2000 (907) 451-4465 [fax]

INVITATION FOR BIDS Non-Personal Service Contract

Solicitation No 23-F0013

Greetings:

You are invited to submit your bids for:

PLAYGROUND INSTALLATION – WELLER ELEMENTARY (WLR)

A pre-bid /site visit will be held at Weller Elementary School 635 Elementary Drive, Fairbanks, AK 99707 at **2:00 PM on May 19, 2023**.

Bids shall be received at the District Purchasing Office located at the School District Administrative Offices, 520 5th Ave, Fairbanks, AK 99701, until **4:00 pm on June 9, 2023**, at which time they shall be opened and publicly ready aloud.

Method of Award: AGGREGATE

This solicitation consists of the following documents:

| | |
|---|-------------------|
| SECTION I - INSTRUCTIONS TO BIDDERS | 1 |
| SECTION II – SERVICE CONTRACT | 7 |
| EXHIBIT “A” – Statement of Work 23-F0013 | 10 |
| Attachment 1 | (5 pages) |
| Attachment 2 | (5 pages) |
| Attachment 3 Updated Sketch showing Electrical Line | (1 page) |
| Attachment 4 Pamphlet 600 Issue 46 State of AK Laborer and Mechanic Minimum Rates of Pay | (39 pages) |
| EXHIBIT “B” – General Provisions – Service Contracts | 77 |
| EXHIBIT “C” –Bid Schedule | 87 |

FAX'D BIDS ARE NOT ACCEPTABLE. Bids shall be submitted on the BID SCHEDULE AND OFFER provided in Section IV. The BID SCHEDULE AND OFFER will be completed in accordance with the instructions provided herein and signed by an officer authorized to bind the company.

Sincerely,

Purchasing Agent
yvette.birkholz@k12northstar.org
907-452-2000x11347

SECTION I - INSTRUCTIONS TO BIDDERS

Services IFB

TABLE OF CONTENTS FOR SECTION I

| Clause | |
|--|---|
| 1. AUTHORITY | 1 |
| 2. PURPOSE | 1 |
| 3. SOLICITATION REVIEW | 1 |
| 4. INTERPRETATION OR REPRESENTATIONS | 2 |
| 5. BID FORMS | 2 |
| 6. PRE-BID CONFERENCE | 2 |
| 7. SUBMITTING BIDS | 2 |
| 8. RECEIPT AND OPENING OF BIDS | 3 |
| 9. LATE BIDS | 3 |
| 10. PRICES | 3 |
| 11. ALTERNATE BIDS | 3 |
| 12. WITHDRAWAL, MODIFICATION, OR CORRECTION | 3 |
| 13. VENDOR TAX ID NUMBER | 4 |
| 14. ACCEPTANCE OR REJECTION OF BIDS | 4 |
| 15. AWARD OF CONTRACT | 4 |
| 16. CONTRACT FUNDING | 4 |
| 17. QUALIFICATIONS OF OFFERORS | 5 |
| 18. RESPONSIVE BID | 5 |
| 19. RESPONSIBLE OFFEROR | 5 |
| 20. AGGRIEVED BIDDERS | 5 |
| 21. ACCEPTANCE PERIOD | 5 |
| 22. BID PREPARATION COSTS | 5 |
| 23. ITEM SPECIFICATIONS | 5 |
| 24. NON-DISCRIMINATION | 6 |
| 25. CONDITIONS AT SITE OF WORK | 6 |
| 26. FEE CHANGES | 6 |

1. **AUTHORITY**

This solicitation is issued pursuant to Fairbanks North Star Borough School District Board Policy 440 as supplemented by Administrative Regulation 440.12.

2. **PURPOSE**

These instructions outline the procedures to be followed in submission of a bid or quotation, the evaluation of bids and quotations, and the award of a contract. The terms "solicitation", "request for quotation" (RFQ), and "invitation for bids" (IFB) are used interchangeably and have the same meaning in these instructions. The terms "offer", "bid", and "quotation" all refer to a vendor's offer to sell at the prices specified on the bid schedule and are used interchangeably.

3. **SOLICITATION REVIEW**

Offerors shall carefully review this solicitation for ambiguities. Offeror's comments concerning ambiguities in this solicitation must be made in writing and received by the Buyer at least four (4) working days before the due date. Such comments will allow time for an amendment to be issued, if one is required. Offerors should send any such comments to the Buyer listed on the front of this solicitation. Offeror's protests based upon any omissions, errors, or the content of this solicitation will be disallowed if not made known prior to the solicitation opening.

INSTRUCTIONS TO BIDDERS (CONT)

4. **INTERPRETATION OR REPRESENTATIONS**

The FNSB School District assumes no responsibility for any interpretation or representations made by any of its officers or agents unless interpretations or representations are incorporated in a written amendment to this solicitation. No oral interpretation will be made to any Offeror as to the meaning of this solicitation or any part thereof. Every request for such interpretation shall be made in writing to the Buyer. Oral explanations or instructions given before the award of the contract will not be binding. Every interpretation made to an offeror will be in the form of an amendment to this solicitation, but it shall be the offeror's responsibility to make inquiry as to the amendments issued. All amendments shall become part of the contract and all offerors shall acknowledge receipt of the amendments. Failure to acknowledge receipt of the amendment may be cause for rejection of bids as non-responsive.

5. **BID FORMS**

Offerors shall submit bids by completion of the Seller's portion of the contract attached as Section II. Specifically, Offerors shall enter the business name, address, phone and FAX numbers, Alaska business license number in the basic contract header section, complete and sign the signature section of the basic contract, and enter the bid price and signature in Exhibit "C" (Bid Schedule) of the basic contract. The contract submitted must be complete, legible, and manually signed. The School District will execute its portion of the contract (bid) submitted and forward to the successful offerors with a School District Purchase Order as notice to proceed. The enclosed "Amendment Acknowledgement" form will be used to acknowledge receipt of any addenda and submitted with the bid. The enclosed "Non-Collusion Certificate" will be used to certify the bid has been arrived at independently and submitted with the bid. Unless otherwise authorized herein, emailed or "FAX" bids will not be accepted. The Non-Collusion Certificate must be

6. **PRE-BID CONFERENCE**

Pre-bid conferences are held to give offerors an opportunity to address deficiencies, defective specifications, and other concerns contained in the bid document. The purpose is to identify and resolve issues that have the potential of generating an award protest based on defective or ambiguous specifications. Unless defective specifications are brought to the FNSB School District's attention at the pre-bid conference, or as stated in the "Solicitation Review" clause, above, protests or appeals of award based on alleged defective specifications will not be favorably considered.

7. **SUBMITTING BIDS**

- a. Bids must be submitted in a sealed envelope, marked and addressed as shown below. Envelopes with bid numbers written on the outside will not be opened until the scheduled date and time. Bids must be received prior to the opening date and time.

| Bidder's Return Address
| XXXXXXXXXXXXXXXXXXXXXXXX
| XXXXXXXXXXXXXXXXXXXXXXXX

FNSB School District
Purchasing Department
520 Fifth Ave
Fairbanks, Alaska 99701

Bid No: (insert the bid number on your envelope)
| Opening Date: (insert the opening date on your envelope)

INSTRUCTIONS TO BIDDERS (CONT)

- b. Neither the Fairbanks North Star Borough School District nor its officers or employees shall be responsible for the premature opening or failure to open a bid that is not properly addressed and identified.
- c. The FNSB School District Purchasing Department is located at 520 Fifth Ave, Fairbanks, Alaska, 99701; and is open for business from 8:00 a.m. to 12:00 noon and 1:00 p.m. to 4:30 p.m., Monday through Friday. Acceptance of Special Delivery mail is not available Saturday, Sunday or holidays. The ultimate responsibility for the delivery of the bid document lies with the bidder. The FNSB School District shall make no concession regarding postal service or any other form of conveyance of the bid document even when timely delivery of the bid fails through no fault of the bidder.
- d. Bidders are encouraged to mail return bids at least five (5) working days prior to bid opening. Bids mailed less than five (5) working days before opening should be sent via Postal Express, DHL Courier Express, or similar service.
- e. This is a suggestion only to minimize late bids received and does not negate the aforementioned disposition of late bids.

8. **RECEIPT AND OPENING OF BIDS**

- a. Bids received prior to the advertised hour of opening will be kept securely sealed. The School District representative whose duty it is to open them will decide when the specified time has arrived, and no bid received thereafter will be considered.
- b. No responsibility will attach to the School District or its representative for the premature opening of, or the failure to open, a bid not properly addressed and identified in accordance with paragraph 1 (above).
- c. At the time and place fixed for the opening of bids, the School District's representative will cause the bids to be opened and publicly read aloud. Bidders and other persons properly interested may be present, in person or in representative.

9. **LATE BIDS**

Bids received after the exact date and time specified for opening shall not be considered, and shall be held unopened by the FNSB School District until after the award of the contract. The FNSB School District reserves the right, at its discretion, to consider bids which have been delayed or mishandled by the FNSB School District.

10. **PRICES**

- a. The offeror shall state prices in the units of purchase specified on the BID SCHEDULE AND OFFER form. Prices quoted for commodities or services must be in U.S. funds and include applicable federal duty, brokerage fees, packaging, and transportation cost to the FOB point so that upon transfer of title the commodity can be utilized, or the services can be provided without further cost.
- b. Prices quoted must be exclusive of federal, state, and local taxes. If the offeror believes that certain taxes are payable by the FNSB School District, the offeror may list such taxes separately, directly below the unit price for the affected item.
- c. The School District shall receive the benefit of any general reduction in Seller's price prior to delivery and in no event shall the School District be charged higher prices than the Seller's similar customers who take delivery in substantially the same amounts and substantially similar circumstances.

11. **ALTERNATE BIDS**

Alternate bids will not be considered unless specifically requested.

INSTRUCTIONS TO BIDDERS (CONT)

12. **WITHDRAWAL, MODIFICATION, OR CORRECTION**

Bids may be modified, corrected, or withdrawn on written, FAX or emailed request if received prior to the time set for bid opening. Bids may not be modified, corrected or withdrawn verbally. The offeror bears the same responsibility for delivery of bid modifications, corrections or withdrawals as for the original document. All modifications, corrections, or requests for withdrawals must be clearly marked as such. The original bid, as modified by such written communication will be considered as the offer. No offeror will be permitted to withdraw his bid after the time set for opening bids.

13. **VENDOR TAX ID NUMBER**

If goods or services procured through this solicitation must be included on a Miscellaneous Tax Statement, as described in the Internal Revenue Code, a valid tax identification number must be provided to the FNSB School District before payment will be made.

14. **ACCEPTANCE OR REJECTION OF BIDS**

- a. The FNSB School District may cancel the solicitation if such cancellation is in the best interest of the FNSB School District.
- b. A bid may be rejected when (1) the bid is not signed, (2) the offeror has failed to perform under some other contract with the FNSB School District, (3) the offeror fails to supply bid or performance bonds, plans, specifications, samples, descriptive literature, etc., when such item is called for in this solicitation, (4) the bid fails to include acknowledgment of all amendments issued, (5) the bid contains an alteration or erasure which is not initialed by the signer, (6) the offeror changes or qualifies a material term or condition of the solicitation.
- c. The FNSB School District has the authority to waive any and all minor deviations or irregularities on any or all bids.
- d. The School District reserves the right to reject all offers and procure the specified supplies or services from contracts let by other government agencies.

15. **AWARD OF CONTRACT**

- a. The resulting contract will be awarded to the responsible offeror submitting the low, responsive bid complying with the requirements of this invitation, provided his bid is reasonable and it is in the best interest of the FNSB School District to accept it. The FNSB School District, however, reserves the right to reject any and all bids and to waive any minor informality or irregularity in bids received whenever such rejection or waiver is in the FNSB School District's best interest.
- b. The FNSB School District reserves the right to reject the bid of an offeror who has previously failed to perform properly or complete on time contracts of a similar nature; to reject the bid of an offeror who is not, in the opinion of the FNSB School District, in a position or qualified to perform the contract; and any or all bids when such rejection is in the best interest of the FNSB School District.
- c. The School District reserves the right to reject any or all bids, to waive deviations from the specifications and to waive informalities in the bids received whenever such rejection or waiver is considered to be in the best interest of the School District.
- d. The School District reserves the right to accept or reject any or all items of any bid, where such acceptance or rejection is appropriate and does not affect the basic bid.
- e. Public notice of award will be made through posting a tabulation of bids/quotations to the School district "Bid Board" located outside the Purchasing Dept. in the Administrative Center.

16. **CONTRACT FUNDING**

Award in part or in whole is contingent upon available funding. In the event adequate funds are not appropriated and allocated by the School Board, the School District reserves the right to cancel multi-year term or requirements at no penalty.

INSTRUCTIONS TO BIDDERS (CONT)

17. **QUALIFICATIONS OF OFFERORS**

At the option of the FNSB School District, and prior to Contract Award, an offeror may be requested to submit a detailed statement of his qualifications, including his previous experience in performing similar or comparable contracts, his business and technical organization, his financial resources and his equipment and plant available to be used in performing the contemplated contract. The FNSB School District shall have the right to take such steps as it deems necessary to determine the ability of the offeror to perform his obligations under the Contract and the offeror shall furnish the FNSB School District all such information and data for this purpose as may be requested. The right is reserved to reject any bid where an investigation of the available evidence or information does not satisfy the FNSB School District the offeror is qualified to carry out properly the terms of the Contract.

18. **RESPONSIVE BID**

A responsive bid is one that conforms in all material respects to the solicitation. The FNSB School District reserves the right to waive technicalities or minor informalities in determining an offeror's responsiveness.

19. **RESPONSIBLE OFFEROR**

A person who has the capability in all respects to perform fully the contract requirements, and the tenacity, perseverance, experience, integrity, reliability, capacity, facilities, equipment, and credit which will assure good faith performance.

20. **AGGRIEVED OFFERORS**

The FNSB School District administration shall post its Notice of Intent to Award by 12:00 noon, on Wednesday preceding the scheduled Tuesday School Board meeting for those contracts requiring School Board approval. Any aggrieved offerors may appeal the award of a contract to the School Board in writing, for those contracts requiring School Board action. The appeal must be received by the Director of Procurement prior to 12:00 noon on the day of the School Board meeting at which award of the contract is to be made. Appeals of contract awards not requiring School Board action must be submitted not later than close of business five (5) calendar days after the posting of the bid results at the Purchasing Office. The appeal must include the name of the person submitting the protest, the name of the offeror represented by that person, the specific bid which is being appealed, a detailed explanation of the reasons for the appeal and the form of relief requested. The aggrieved offeror must serve all other offerors with the notice of the appeal in order to afford them the opportunity to rebut. Failure to give written notice of the appeal provided herein constitutes a waiver by the aggrieved offeror's right of any objection to the award. (FNSB School District Board Policy 442.21 - 442.24; Administrative Regulation 440.12.6.C)

21. **ACCEPTANCE PERIOD**

To provide time for evaluation of offers received and approval of proposed awards, all bids submitted shall remain valid for a period of 60 days.

Any extension of this 60 days acceptance period shall be requested by the District in writing.

22. **BID PREPARATION COSTS**

The FNSB School District is not liable for any costs incurred by the offeror in bid preparation.

23. **ITEM SPECIFICATIONS**

The attached specifications/Statement of Work may indicate specific products to be used in this project. These products reflect items that have been purchased/installed in the past, are of known quality, and are acceptable to the School District. If the products specified are cited in the specifications/Statement of Work as "or equal" or "approved equal", bidders may offer other than that specified if the item offered is equal to that specified in general style, type, quality, workmanship, economy of operation, performance, characteristics, and suitability for the purpose intended. If so, offerors must identify the brand name offered, provide descriptive literature, and be prepared to provide samples if called for during the evaluation. Descriptive literature provided must be of sufficient scope so as to allow the District's representative to make an intelligent determination as to the suitability of the product offered to the District's needs. The District retains the sole right to determine if a product offered is, in fact, equal to that specified in this invitation for bids. If there is any doubt as to the suitability of a product offered on an "or equal" basis, the

INSTRUCTIONS TO BIDDERS (CONT)

product will be rejected in favor of an offer which provides the specified product. The offeror warrants the alternative product to be equal or better than the specified item in quality, workmanship, economy of operation, performance, and characteristics; and is suitable for the purpose intended. If the item specifications indicate "no substitute", offers that include only the specified item will be considered.

24. **NON-DISCRIMINATION**

Offerors agree that if awarded a contract under this invitation they shall comply with the applicable provisions of the Federal Civil Rights Act of 1964 and all amendments thereto, the Equal Employment Opportunity Act and all amendments thereto, the Fairbanks North Star Borough School Board Policy, article 441, and all regulations issued thereunder by the Federal and State governments. If the contractor fails to comply with such acts and regulations, the School District shall have the right to immediately terminate this contract.

25. **CONDITIONS AT SITE OF WORK**

Offerors must visit the premises to ascertain pertinent conditions (readily determined by inspection and inquiry), such as the area, location, accessibility and general character of the premises. Execution of the Contract by the Offeror shall in no way relieve him of any obligation under it due to his failure to receive or examine any form of legal instrument or to visit the premises and acquaint himself with the conditions there existing and the School District will be justified in rejecting any claim based on the facts regarding which he should have been on notice as a result thereof.

26. **FEE CHANGES**

In the event the Fairbanks North Star Borough changes the regulator fee(s) during the life of this contract the Seller may pass on to the Buyer verifiable increases in its costs. Conversely, the Seller shall pass on to the Buyer any decrease of like costs. The Seller shall not invoice the Buyer at an increased rate unless the fee increase has been submitted to the Buyer, and approved by the Contract Administrator in advance. The Seller shall be prepared to provide the Buyer complete cost data to support price changes. The Buyer reserves the right to terminate this contract, in whole or in part, if the Seller increases prices. The Buyer reserves the right, at its option, to audit the Seller's financial records as they pertain to administration of this clause.

SECTION II – SERVICE CONTRACT

23-F0013

TABLE OF CONTENTS SERVICE CONTRACT

Parties to Contract

Basic Contract

| | | |
|---|---|---|
| 1 | SUPERSEDING EFFECT | 7 |
| 2 | SCOPE OF WORK | 8 |
| 3 | PERIOD OF PERFORMANCE | 8 |
| 4 | CONSIDERATION AND PAYMENT | 8 |
| 5 | INSPECTION AND ACCEPTANCE | 8 |
| 6 | DOCUMENT INCORPORATED BY REFERENCE | 8 |
| 7 | ORDER OF PRECEDENCE | 8 |
| 8 | NOTICES AND CORRESPONDENCE | 8 |

Signatures

Exhibit “A” – Statement of Work, 23-F0013

Exhibit “B” – General Provisions – Service Contracts

Exhibit “C” – Bid Schedule

BETWEEN Fairbanks North Star Borough School District
A Political Subdivision of the State of Alaska
Having a place of business at
520 5th Ave
Fairbanks, AK 99701
Hereinafter referred to as “Buyer”

AND

a _____ Corporation having a place of business at
(State) _____

(Phone) _____

(FAX) _____

(Alaska Business License Number) _____

hereinafter referred to as “Seller”

WITNESSETH THAT:

IN CONSIDERATION OF the promises and mutual covenants and agreements herein contained, the parties hereto agree as follows:

1 **SUPERSEDING EFFECT**

This contract supersedes all prior oral or written agreements, if any, between the parties and constitutes the entire agreement between the parties with respect to the work to be performed under this Contract.

CONDITIONS OF PURCHASE: GOODS (CONT)

2 **SCOPE OF WORK**

The Seller shall furnish all the services and materials necessary to perform the work associated with Weller Elementary (WLR) Playground Installation, as set forth in Exhibit "A" entitled "Statement of Work 23-F0013, hereinafter referred to as the "SOW."

3 **PERIOD OF PERFORMANCE**

- a Work to be accomplished under this Contract shall be performed during the period from the date of execution of the contract to July 31, 2024.
- b Specific periods of performance, if any, and completion dates for each Contract line item are set forth in the SOW.
- c Upon receipt of authorized Purchase Order, Contractor shall secure a performance bond, to provide surety for 100% of the contract amount. Contractor shall also provide a certificate of insurance.

4 **CONSIDERATION AND PAYMENT**

Payment will be made in accordance with Exhibit "C".

5 **INSPECTION AND ACCEPTANCE**

All work performed under this Contract shall be inspected and accepted in accordance with the provisions of the SOW.

6 **DOCUMENT INCORPORATED BY REFERENCE**

The following documents are hereby incorporated by reference:

- a Exhibit "A" entitled "Statement of Work No. 23-F0013
- b Exhibit "B" entitled "General Provisions – Service Contracts"
- c Exhibit "C" entitled "Bid Schedule"

7 **ORDER OF PRECEDENCE**

The following order of precedence shall govern in the event of a conflict between documents of this Contract:

- a Articles 1 through 8 hereof.
- b Exhibit "A" entitled "Statement of Work No. 23-F0013
- c Exhibit "B" entitled "General Provisions – Service Contracts"
- d Exhibit "C" entitled "Bid Schedule"

8 **NOTICES AND CORRESPONDENCE**

All notices and correspondence shall be sent by either party to the other party, in all matters dealing with this Contract, to the following addresses:

CONDITIONS OF PURCHASE: GOODS (CONT)

a To the Buyer: FNSB School District
 520 Fifth Ave
 Fairbanks, AK 99701
 Attention: _____

b To the Seller: _____

 Attention: _____

Or any other address provided prior written notice is given to the other party.

IN WITNESS WHEREOF, the parties hereto have executed this Contract which is effective as of _____

Attest: FNSB School District

Signature _____
 Buyer

Date _____

Attest: _____
 (Bidder's typed or printed name)

Signature _____
 (Individual authorized to bind firm)

Title _____

Date _____
 (Date Signed)

EXHIBIT “A” – Statement of Work

23-F0013

TABLE OF CONTENTS

| | |
|---|----|
| Clause | |
| SCOPE OF WORK | 10 |
| BACKGROUND | 10 |
| DESCRIPTION OF WORK | 10 |
| SECTION 015500 - ENVIRONMENTAL PROTECTION | 10 |
| SECTION 116813 - PLAYGROUND EQUIPMENT | 16 |
| SECTION 321800 - PLAYGROUND PROTECTIVE SURFACING | 19 |
| OTHER CONDITIONS | 24 |

1. SCOPE OF WORK

Install new playground equipment and new protective surfacing tiles at Weller Elementary. Make necessary improvements to asphalt pad to properly install new surfacing tiles. Uninstall and reinstall two existing tire swings in a new location with new playground equipment.

2. BACKGROUND

- a. The purpose of this contract is to install new playground equipment and to move two existing tire swings to a new location.
- b. The facilities include School and Administrative buildings at Weller Elementary School.
- c. The School District (Buyer) does not own the equipment, nor employ the staff necessary to provide this service.
- d. Services requested under this contract are critical to the mission of the District, or required per local, State, or Federal regulations.

3. LOCATION AND CONTACTS

Weller Elementary School, 635 Elementary Drive, Fairbanks, AK 997
School District Contract Administrator: Dan DeGraw, Project Manager, 907-799-4486
dan.degraw@k12northstar.org

4. SCHEDULE

The playground equipment has been ordered and received by the School District; it is currently in storage at the FNSBSD Shipping & receiving warehouse. Work may begin as soon as possible (upon execution of contract) and must be completed no later than 7/31/24.

5. DESCRIPTION OF WORK

SECTION 015500- ENVIRONMENTAL PROTECTION

Statement of Work (cont.)

I. GENERAL

a. APPLICABLE REGULATIONS

(1) In order to prevent, and to provide for abatement and control of, any environmental pollution arising from the construction activities of the Contractor and his subcontractors in the performance of this contract, they shall comply with all applicable control and abatement, as well as the specific requirements stated elsewhere in the contract specifications.

b. PROTECTION OF LAND RESOURCES

(1) General: The work covered by this section consists of furnishing all labor, materials, and equipment, and performing all work required for the prevention of environmental pollution during and as the result of construction operation under this contract except for those measures set forth in other Technical Specifications. For the purpose of this specification, environmental pollution is defined as the presence of chemical, physical, or biological elements or agents which adversely affect human health or welfare; unfavorably alter ecological balances of importance to human life; affect other species of importance to man; or degrade the utility of the environment for aesthetic and recreational purposes. The control of environmental pollution requires consideration of air, water, and land and involves management of noise and solid waste as well as other pollutants. It is intended that the land resources within the project boundaries and outside the limits of permanent work performed under this contract be preserved in their present condition or be restored to previous condition after completion of the project. Insofar as possible, the Contractor shall confine his construction activities to areas defined by the plans or specifications.

(2) Post-Construction Cleanup or Obliteration: The Contractor shall obliterate all signs of temporary construction facilities such as work areas, stockpiles of excess or waste materials, or any other vestiges of construction as directed by the Owner's representative

c. AIR POLLUTION

(1) Dust Control: The Contractor will be required to maintain all excavations, embankments, stockpiles, and all other work areas within or without the project boundaries free from dust which would cause a hazard or nuisance to others. Approved temporary methods of stabilization consisting of sprinkling or similar methods will be permitted to control dust. Sprinkling, to be approved, must be repeated at such intervals as to keep all parts of the disturbed area at least damp at all times, and the Contractor must have sufficient competent equipment on the job to accomplish this if sprinkling is used. Dust control shall be performed as the work proceeds and whenever a dust nuisance or hazard occurs.

(2) Burning: On-site burning will not be permitted.

d. HAUL ROUTES

(1) Contractor will be required to take precautions to prevent the generation of dust along haul routes to/from borrow pits and waste disposal sites.

(2) All objects that are inadvertently blown from Contractor vehicles and equipment shall be picked up by Contractor as it is discovered, or when discovered by the Project Manager.

(3) Gravel or topsoil spillage on paved streets shall be removed with a street sweeper by the Contractor as it is discovered, or when discovered by the Project Manager. Rocks shall not be swept into maintained grass or landscaped areas.

Statement of Work (cont.)

e. NOTIFICATION

(1) The Project Manager will notify the contractor in writing of any noncompliance with the foregoing provisions and the action to be taken. The contractor shall, after receipt of such notice, immediately take corrective action. Such notice, when delivered to the Contractor or his authorized representative at the site of the work, shall be deemed sufficient for the purpose. If the Contractor fails or refuses to comply promptly, the Owner's representative may issue an order stopping all or part of the work until satisfactory corrective action has been taken.

(2) No part of the time lost due to any such stop order shall be made the subject of a claim for extension of time or for excess costs or damages by the Contractor.

(3) Contractor shall immediately notify the following agencies in the event of any spills or discharges of petroleum products or other hazardous substances:

State of Alaska Department of Environmental Conservation – (907) 451-2100

Fairbanks Fire Department – (907) 450-6600

Project Manager – Dan DeGraw – (907) 799-4486

f. SUBCONTRACTORS

(1) Compliance with the provisions of this section by subcontractors will be the responsibility of the Contractor.

g. EROSION, SEDIMENT, AND POLLUTION CONTROL

(1) DESCRIPTION. Plan, provide, inspect and maintain control of erosion, sedimentation, water pollution, and hazardous materials contamination.

(2) DEFINITIONS:

(a) BMP (Best Management Practices): A wide range of project management practices, schedules, activities, or prohibition of practices, that when used alone or in combination, prevent or reduce erosion, sedimentation, and/or pollution of adjacent storm sewer systems, water bodies, or wetlands. BMP's include temporary or permanent structural and non-structural devices and practices. Common BMP's are described in ADOT & PF's Alaska Storm Water Pollution Prevention Guide and ADEC's Alaska Storm Water Guide, both available via the internet.

(b) ESCP (Erosion and Sediment Control Plan): The contractor's general plan for control of project related erosion and sedimentation. The ESCP normally consists of a general narrative and a map or site plan.

(c) Final Stabilization: A point in time when all ground-disturbing activities are complete and permanent erosion and sediment controls are established and functional. A stabilized site must be protected from erosive forces of raindrop impact and water flow. Typically, all unpaved areas except graveled shoulders, crushed aggregate base course, or other areas not covered by permanent structures are protected by either a uniform blanket of perennial vegetation (at least 70% cover density) or equivalent permanent stabilization measures such as riprap, gabions, or geotextiles.

(d) HMCP (Hazardous Material Control Plan): The Contractor's detailed plan for prevention of pollution that stems from the use, containment, cleanup, and disposal of hazardous material,

Statement of Work (cont.)

including petroleum products generated by construction activities and equipment.

(e) NOI: Notice of Intent to commence ground-disturbing activities under the APDES Storm Water General Permit.

(f) NOT: Notice of Termination of coverage under the APDES Storm Water General Permit.

(g) APDES Storm Water General Permit: The permit issued by the Alaska Department of Environmental Conservation (ADEC) under the Alaska Pollutant Discharge Elimination System (APDES) for storm water discharges from construction activities. This permit requires an approved SWPPP and NOI's listed as active status by ADEC prior to ground-disturbing activities for any project that will result in a total ground disturbance of equal to or greater than one acre and discharge storm water to waters of the U.S.

(h) SPCC (Spill Prevention, Control, and Countermeasure): The Contractor's detailed plan for an oil spill prevention and control measures that meets the requirements of 40 CFR 112.

(i) SWPPP (Storm Water Pollution Prevention Plan): The Contractor's detailed plan for storm water management under the APDES Storm Water General Permit. The SWPPP is developed based on the Contractor's ESCP when a project will result in a total ground disturbance of equal to or greater than one acre and discharge storm water to waters of the U.S.

h. ACTION SUBMITTALS

(1) For all projects, electronically submit your ESCP and HMCP to the Project Manager for approval. Electronically submit your SPCC Plan (if required by 40 CFR 112). If the project will result in a total ground disturbance of equal to or greater than one acre and discharge storm water to waters of the U.S., electronically submit SWPPP in lieu of the ESCP. Sign all submittals. Deliver these documents to the Project Manager no less than fourteen calendar days prior to commencing ground-disturbing activities.

(2) Submittals will be returned to you as either requiring modification, or as approved by the Department. Once you receive an approved SWPPP, submit your NOI to ADEC. A copy of the NOI must be submitted to the Department. The Department will submit a separate NOI as appropriate. Follow the SWPPP submittal requirements outlined in the APDES Storm Water General Permit. SWPPP submittal to ADEC is required for certain projects.

(3) The approved ESCP or SWPPP, approved HMCP, and submitted SPCC Plan (if required by 40 CFR 112) becomes the basis of work required for the project's erosion, sediment, and pollution control.

(4) When the project is stabilized, as determined by the Project Manager, submit your signed NOT to ADEC with a copy to the Project manager. The Department will transmit a separate NOT as appropriate.

i. EROSION AND SEDIMENT CONTROL PLAN (ESCP) REQUIREMENTS

(1) For projects not requiring coverage under APDES Storm Water General Permit, prepare an ESCP based on the following guidelines:

1. Plan the project to take advantage of topography, soils, waterways, and natural vegetation;

Statement of Work (cont.)

2. Expose the smallest practical area for the shortest possible time;
3. Apply on-site erosion control measures to reduce the erosion from the site;
4. Use sediment control measures to prevent off-site detrimental impacts whenever primary on-site erosion control measures might be insufficient; and
5. Implement a thorough maintenance and follow-up program.

(2) The ESCP shall include at a minimum a site map and associated narrative, describing waters of the U.S. that could be impacted, potential pollutants, BMP's that will be implemented, and a schedule of BMP inspection and maintenance activities

j. STORMWATER POLLUTION PREVENTION PLAN (SWPPP) REQUIREMENTS

(1) For projects requiring coverage under the APDES Storm Water General Permit, prepare a SWPPP certified by a licensed Professional Engineer or a Certified Professional in Erosion and Sediment Control. The SWPPP shall be based on the guidelines described in Section 015500 1.9 and must consider first preventing erosion, then minimizing erosion, and finally trapping sediment before it enters waterways.

(2) The SWPPP must include all requirements set forth in the ADEC Storm Water General Permit and outlined in the ADEC SWPPP Checklist (available via the internet). Specify the line of authority and designate your field representative for implementing SWPPP compliance. Designate one representative for each subcontractor who performs earth-disturbing activities, or who will install or maintain erosion and sediment control measures.

k. HAZARDOUS MATERIAL CONTROL PLAN (HMCP) REQUIREMENTS

(1) Prepare a HMCP for the handling, storage, cleanup, and disposal of petroleum products and other hazardous substances. (See CFR 117 and 302 for listing of hazardous materials.)

(2) List and give the location of all hazardous materials, including office materials, to be used and/or stored on site, and their estimated quantities. Detail your plan for storing these materials as well as disposing of waste petroleum products and other hazardous materials generated by the project.

(3) Identify the locations where storage, fueling, and maintenance activities will take place, describe the maintenance activities, and list all controls to prevent the accidental spillage of oil, petroleum products, and other hazardous materials.

(4) Detail your procedures for containment and cleanup of hazardous substances, including a list of the types and quantities of equipment and materials available on site to be used.

(5) Detail your plan for the prevention, containment, cleanup, and disposal of soil and water contaminated by accidental spills. Detail your plan for dealing with unexpected contaminated soil and water encountered during construction

(6) Specify the line of authority and designate your field representative for spill response and one representative for each subcontractor.

l. SPILL PREVENTION, CONTROL, AND COUNTERMEASURE (SPCC) PLAN REQUIREMENTS

Statement of Work (cont.)

(1) Prepare and implement a SPCC Plan that is certified by a licensed Professional Engineer when required by 40 CFR 112, including:

- (a) When oil spills may reach navigable waters; and
- (b) Your total above ground oil storage capacity is greater than 1,320 gallons

(2) Comply with 40 CFR 112 and address the following issued in your SPCC plan:

- (a) Operating procedures that prevent oil spills;
- (b) Control measures installed to prevent a spill from reaching navigable waters; and
- (c) Countermeasures to contain, clean up, and mitigate the effects of an oil spill

m. CONSTRUCTION REQUIREMENTS

(1) For projects not requiring coverage under the APDES Storm Water General Permit, implement the ESCP and inspect and maintain all BMPs as outlined in the ESCP.

(2) For projects requiring coverage under the APDES Storm Water General Permit, implement the SWPPP. Do not begin ground-disturbing work until ADEC has acknowledged receipt of your NOI and has listed it as active status. Post at the construction site:

- (a) APDES Permit Number, if available, and a copy of the NOI;
- (b) Name and 24-hour contact number of your local contact person.

(3) Comply with all requirements of the APDES Storm Water General Permit, implement and maintain all temporary and permanent structural and non-structural BMPs identified in the SWPPP, and ensure that the SWPPP remains on-site and is kept current. BMP inspections shall be conducted at least once every 7 calendar days by a licensed Professional Engineer, a Certified Professional in Erosion and Sediment Control, or an Alaska Certified Erosion and Sediment Control Lead. The SWPPP shall be amended to correct problems resulting from any:

- (a) Storm or other circumstance that threatens water quality; and
- (b) Inspection that identifies existing or potential problems.

(4) If unanticipated or emergency conditions threaten water quality, take immediate suitable action to preclude erosion and pollution. Report discharges as required by federal, state, and local law and as described in the SWPPP.

(5) Submit SWPPP amendments to the Project Manager within seven days following the storm or inspection. Detail additional emergency measures required and taken, to include additional or modified measures. If modifications to existing measures are necessary, complete implementation within seven days.

(6) Submit a signed NOT to ADEC and the Project Manager:

- (a) When the project site has been finally stabilized and all storm water discharges from construction activities authorized by the APDES Storm Water General Permit have ceased.
- (b) When the construction activity operator has changed.

Statement of Work (cont.)

(7) If you fail to:

i) Pursue work required by the approved SWPPP;

ii) Respond to inspection recommendations and/or deficiencies in the SWPPP; or

iii) Implement erosion and sedimentation control identified by the Project Manager, the Project Manager may, after giving you written notice, proceed to perform such work and deduct the cost thereof, including project engineering costs from your progress payments.

(8) Comply with all requirements of the approved HMCP, the submitted SPCC Plan, and all state and federal regulations that pertain to the handling, storage, cleanup, and disposal of petroleum projects or other hazardous substances. Contain, clean up and dispose of all discharges of petroleum products and/or other materials hazardous to the land, air, water, and organic life forms. Perform all fueling operations in a safe and environmentally responsible manner. Comply with the requirements of 18 AAC 75 and AS46, Oil and Hazardous Substances Pollution Control. Report oil spills as required by federal, state, and local law, and as described in your HMCP and SPCC Plans.

(9) Temporary erosion and pollution control measures that are required at Contractor-furnished sites are subsidiary

(10) Perform temporary erosion and pollution control measures that are required due to your negligence, carelessness, or failure to install permanent controls as a part of the work as scheduled or ordered by the Project Manager, or for your convenience, at your own expense.

(11) Permanent erosion and pollution control measures will be measured and paid for under other contract items, when shown on the bid schedule.

II. PRODUCTS (Not Used)

III. EXECUTION (Not Used)

END OF SECTION 015500

SECTION 116813 -PLAYGROUND EQUIPMENT

PART 1 GENERAL

1.1 SCOPE: SECTION 11 68 13 - PLAYGROUND EQUIPMENT

1.2 DESCRIPTION

A. Playground equipment includes, but is not limited to, the following:

1. Installation of playground equipment.

1.3 RELATED WORK

A. 32 18 00 Playground Protective Surfacing.

1.4 REFERENCES

Statement of Work (cont.)

A. American with Disabilities Act (ADA), 2010.

B. ASTM F 1487 (2001e1), Standard Consumer Safety Performance Specification for Playground Equipment for Public Use.

C. U.S. Consumer Product Safety Commission (CPSC) – Playground Safety Handbook.

1.5 CHILD SAFETY STANDARDS

A. Play events shall meet the child safety performance requirements described in CPSC Publication Number 325 and ASTM F 1487. The requirements include the entanglement; pinch, crush, and shear points; suspended hazards; play event access and egress points; play event use zone perimeter; and design criteria.

1.6 SUBMITTALS

A. Certificates:

1. Child Safety and Accessibility Evaluation: Record of measurements and findings by NPSI certified playground safety inspector. Verification that the installed play events and equipment meet manufacturer's recommendations and paragraph CHILD SAFETY STANDARDS.

B. Equipment Identification: List of equipment received from client.

1.7 QUALITY ASSURANCE

A. Coordinate all associated work to assure proper installation per manufacturer's printed instructions.

B. Completed installation shall comply with the intent of the Americans with Disabilities Act (ADA).

1.8 DELIVERY AND STORAGE

A. Buyer will furnish all playground equipment to the contractor.

B. Contractor to store materials on-site or in a location provided by Client.

C. Contractor to inspect all parts for damage when received from Client. Any damage to equipment to be reported to Client immediately. Contractor assumes responsibility for any equipment that is installed.

1.9 MAINTENANCE MATERIALS SPARE PARTS.

A. Provide maintenance materials and any special tools necessary to make routine adjustments or repairs to equipment.

B. Return any spare parts furnished to Client.

PART 2 PRODUCTS

2.1 PLAYGROUND EQUIPMENT

A. All playground equipment will be furnished by the Buyer.

1. Playworld play structure 350-2077.

Statement of Work (cont.)

PART 3 EXECUTION

3.1 GENERAL

- A. All equipment installation shall conform to manufacturer's printed instructions.
- B. Copies of manufacturer's printed installation instructions shall be maintained on the jobsite during installation.

3.2 PREPARATION

- A. Stake locations of all equipment in accordance with drawings and obtain approval from Project Manager prior to installation. Ensure no overlap in the use zone (clear area and fall zone as defined in ASTM F 1487).
- B. Inspect job conditions to assure that all areas to receive equipment units specified have been properly prepared and that all inserts, anchorage, blocking, and other items have been accurately placed.
- C. Make needed corrections prior to proceeding.

3.3 INSTALLATION

- A. Install equipment in strict accordance with manufacturer's printed instructions, including sequence of installation and assembly.

3.4 RESTORATION AND CLEAN UP

- A. When the operation has been completed, the Sub-Contractor shall clean up and protect the site. Existing areas that have been damaged from the operation shall be restored to the original condition at the Sub-Contractor's expense. The site and play events shall be cleaned of all materials associated with the operation. Play events and surfaces shall be cleaned of dirt, stains, filings, and other blemishes occurring from shipment and installation. Cleaning methods and agents shall be recommended by the manufacturer. Required labeling shall be undamaged and visible.

3.5 PLAYGROUND ACCEPTANCE

- A. Child Safety and Accessibility Evaluation: After the protective surfacing is installed, the play events and protective surfacing shall be thoroughly inspected and measured by the Contractor Quality Control Inspector (inspection may be performed by FNSBSD CPSI Certified inspector at no additional cost to the Contractor) to verify the playground meets manufacturer's recommendations, Child Safety Standards, and acceptable fall heights as follows:

1. All equipment is securely anchored;
2. All hardware and connectors are tight and below the wear surface;
3. There are no sharp points, edges, and protrusions;
4. There is no potential for entanglement;
5. There are no pinch crush or shear points.

- B. Measure use zone distances to determine the area is free of hard surfaces, objects or obstacles. Determine exceptions to use zone overlap occurrence in accordance with ASTM F 1487. Measure play event fall height and depth of loose fill protective surfacing.

Statement of Work (cont.)

Ensure the slide exist region has required clear zone. Swing seat clearances are measured while occupied by a maximum user for the age group using the equipment. The finished installation shall have the appearance of a single covering. Protective surfacing that does not comply shall be reinstalled. Hardware that does not comply shall be replaced. Ensure positive drainage for the area and the lowest elevation of protective surfacing subgrade has been provided.

END OF SECTION

SECTION 321800 - PLAYGROUND PROTECTIVE SURFACING

PART 1 GENERAL

1.1 SCOPE: SECTION 32 18 00 - PLAYGROUND PROTECTIVE SURFACING

1.2 DESCRIPTION

A. Playground Protective Surfacing includes, but is not limited to, the following:

1. Resilient, Interlocking, Playground Safety Surfacing Tiles.
2. Accessories.

1.3 SCOPE OF WORK

A. Contractor shall provide all Work described in this section, described elsewhere in the Specifications, and indicated on the Drawings.

1.4 RELATED SECTIONS

A. 11 68 13 Playground Equipment.

1.5 REFERENCES

A. Codes and standards referenced in this, and subsequent articles of this section shall become a part of the Specifications to the extent of their applicability to the particular product, method, assembly, or system under consideration. In case of conflict the most stringent shall govern.

1. Public Playground Safety Handbook. U.S. Consumer Product Safety Commission. 2010 edition.
2. ASTM F1292 Standard Specification for Impact Attenuation of Surface Systems Under and Around Playground Equipment.
3. ASTM F 1951 Standard Specification for Determination of Accessibility of Surface Systems Under and Around Playground Equipment.
4. ASTM D 573 – Standard Test Method for Rubber-Deterioration in an Air Oven (Heat Aged).
5. ASTM E 303 – Standard Test Methods for Skid Resistance on Coated Tile.

Statement of Work (cont.)

6. ASTM D 412 – Standard Test Methods for Vulcanized Rubber and Thermoplastic Elastomers.

7. ASTM D 624 – Standard Test Method for Tear Strength of Conventional Vulcanized Rubber and Thermoplastic Elastomers.

8. ASTM D 3676 – Standard Specification for Rubber Cellular Cushion Used for Carpet or Rug Underlay.

1.6 PERFORMANCE REQUIREMENTS

A. Impact Attenuation: According to ASTM F 1292.

B. Accessibility of Surface Systems: According to ASTM F 1951.

C. Rubber Deterioration/Air Oven: According to ASTM D 573.

D. Slip Resistance: According to ASTM E 303.

E. Tensile Strength: According to ASTM D 412.

F. Elongation at Break: According to ASTM D 412.

G. Tear Strength: According to ASTM D 624.

H. Peak Load: According to ASTM D 624.

I. Density: According to ASTM D 3676.

1.7 DEFINITIONS

A. Critical Height: Standard measure of shock attenuation. According to CPSC No. 325, this means “the fall height below which a life-threatening head injury would not be expected to occur.”

1.8 SUBMITTALS

A. Product Data: For each type of product indicated.

B. Samples for Initial Selection: For each type of playground surface system indicated.

1. Include color options. Manufacturers catalog is acceptable in lieu of physical samples.

C. Samples for Verification:

1. Manufacturer’s sample of one full tile.

D. Qualification Data: For Qualified Installer and Testing Agency.

E. Material Certificates: For each type of resilient tile from the manufacturer.

F. Material Test Reports: Based on evaluation of comprehensive tests performed by a qualified testing agency, for each critical height of tile.

Statement of Work (cont.)

G. Field Quality-Control Reports.

H. Maintenance Data: Manufacturer's maintenance and cleaning instructions.

I. Warranty: Copy of standard warranty.

1.9 QUALITY ASSURANCE

A. Installer Qualifications: An employer of workers trained and approved by the manufacturer.

B. Source Limitations: Obtain playground surface materials from a single source.

1.10 DELIVERY, STORAGE, AND HANDLING

A. Delivery: Deliver materials to site in manufacturer's original, unopened containers and packaging, with labels clearly identifying product name and manufacturer.

B. Storage

1. Store materials in accordance with manufacturer's instructions.

2. Playground Safety Surfacing Tiles:

a. Store tiles in a dry area prior to installation.

b. Protect tiles from direct sunlight before installation.

3. Adhesive:

a. Store adhesive in a dry area at a minimum temperature of 40°F. Avoid adhesive applications below 40°F and above 105°F.

1.11 PROJECT CONDITIONS

A. Weather Limitations: Proceed with installation only when existing and forecasted weather conditions permit playground surface system installation to be performed according to the manufacturer's written instructions and warranty requirements.

B. Tile Temperature: Ensure surface temperature of tile is a minimum of 50 degrees F at time of installation.

C. Air Temperature: Ensure air temperature is a minimum of 40 degrees F (4 degrees C) for a minimum of 24 hours before and during and after installation.

D. Tile or Air Temperatures: Consult manufacturer's installation instructions for modified installation procedure when tile or air temperatures are above 85 degrees F.

1.12 WARRANTY

A. Special Warranty

1. Materials and Workmanship: Playground safety surfacing tiles shall be warrantied for defects in materials and workmanship for 10 years from date of Final Acceptance.

Statement of Work (cont.)

PART 2 PRODUCTS

2.1 RESILIENT, INTERLOCKING, PLAYGROUND SAFETY SURFACING TILES

- A. Description: Resilient, interlocking, playground safety surfacing tiles.
- B. Compliance: Meet and exceed CSPC guidelines and for impact attenuation.
- C. Material: Compression-molded, recycled rubber and binding agents.
- D. Tile Locking: U-shaped male and female configuration running full length on all 4 sides to lock tiles to adjacent tiles.
- E. Top Edges: Chamfered.
- F. Tile Bottom: Hollow Core.
- G. Wear Layer: Minimum .50-inch thick.
- H. Installed Size: 24-inch x 24-inch.
- I. Thickness: Critical fall height of 8.5 feet or higher.
- J. Colors: As shown on drawings.
- K. Testing Results: Testing Results:
 - 1. Freeze Thaw, ASTM C 1026: no appearance of the presence of cracking, chipping, or breaking of the tile.
 - 2. Rubber Deterioration/Air Oven, ASTM D 573: Pass.
 - 3. Tensile Strength, ASTM D 412: 132.92 psi.
 - 4. Elongation at Break, ASTM D 412: 56.46 percent.
 - 5. Tear Strength, D 624: 34.66 lbs./force/inch.
 - 6. Flammability: Burning Pill, ASTM D 2859: Pass.
 - 7. Determination of Accessibility, ASTM F 1951: Meets/Exceeds requirements.
 - 8. Water Permeability, ASTM F 1551: 43.8 inches/hour.
 - 9. Durometer Hardness, ASTM D 2240: 55.1.
 - 10. Static Coefficient of friction, ASTM C 1028:
 - a. Dry: .63.
 - b. Wet: .47.
 - 11. Taber Abrasion, Wear index, ASTM C 501: 94.4.

Statement of Work (cont.)

2.2 ACCESSORIES

A. Corners:

1. Prefabricated outside and inside corners.
2. Material: Same as playground safety surfacing tiles.

B. Ramps:

1. Prefabricated ramps used as wedging.
2. Prefabricated ADA-Compliant Ramps.
3. Material: Same as playground safety surfacing tiles.

C. Adhesive: Furnished by tile manufacturer.

PART 3 EXECUTION

3.1 EXAMINATION

A. Examine areas to receive playground safety surfacing tiles. Notify responsible parties if areas are not acceptable. Do not begin installation until unacceptable conditions have been corrected.

3.2 PREPARATION

A. General: Prepare substrates to receive surfacing products according to manufacturer's written instructions. Verify proper slope, support, and drainage for playground safety surfacing tiles.

B. Asphalt Subsurface: May require longer curing time to allow the oils to dissipate. Some asphalt surfaces may have a significant amount of tars or oils and the adhesive should be tested to ensure adhesion. After the adhesive has cured and if the tiles can be pulled up with asphalt or concrete attached to the glue, it is the base that has failed, and not the adhesive.

1. Asphalt subsurface shall be as shown on drawings.
2. Ensure asphalt is sound with no loose material or cracks over 1/8-inch wide.
3. Ensure asphalt is a minimum of 21 days old.
4. Scarify existing asphalt according to manufacturer's instructions if adhesion test fails.

3.3 INSTALLATION GENERAL

A. General: Comply with playground surface system manufacturer's written installation instructions. Install playground surface system over area indicated on drawings.

B. Ensure prepared subsurface and tiles are dry and clean.

C. Layout tile surface in accordance with manufacturer's instructions.

D. Install tiles in single installation session, if possible.

Statement of Work (cont.)

E. Apply adhesive in accordance with manufacturer's instructions for tile-to-tile as well as tile-to-base for all keystone and strategic tile rows.

3.4 CLEANING

A. Remove adhesive spills from playground safety surfacing tiles and equipment in accordance with manufacturer's instructions.

B. Clean tiles in accordance with the manufacturer's instructions.

3.5 PROTECTION

A. Protect playground safety surface tiles from foot traffic for a minimum of 12 hours after installation.

B. Protect completed tiles from damage during construction.

3.6 FIELD QUALITY CONTROL

A. Testing Agency: Engage a qualified testing agency to perform tests and inspections.

B. Testing Services: Testing and inspecting of completed applications of playground surface system shall take place according to ASTM F 1292.

C. Remove and replace applications of playground surface system where test results indicate that it does not comply with requirements.

D. Additional testing and inspecting, at Contractor's expense, will be performed to determine compliance of replaced or additional work with requirements.

E. Manufacturer test reports will meet the inspection requirements as long as the required depth of Engineered Wood Fiber (EWF) is also confirmed in the field.

END OF SECTION

3. OTHER CONDITIONS

a. REDUCED SERVICE PERIODS

There are periods when School sites will require reduced services. The Buyer reserves the right to increase or decrease the volume of services requested at no penalty to the District.

b. EQUIPMENT

The Buyer reserves the right to change the equipment required.

c. LOCATION ADDITIONS/DELETIONS

Statement of Work (cont.)

The Buyer reserves the right to add or delete service locations as needed.

d. **HAZARDOUS MATERIALS**

The Buyer has established guidelines for the disposal of hazardous material. Hazardous material shall not be transported by the contractor.

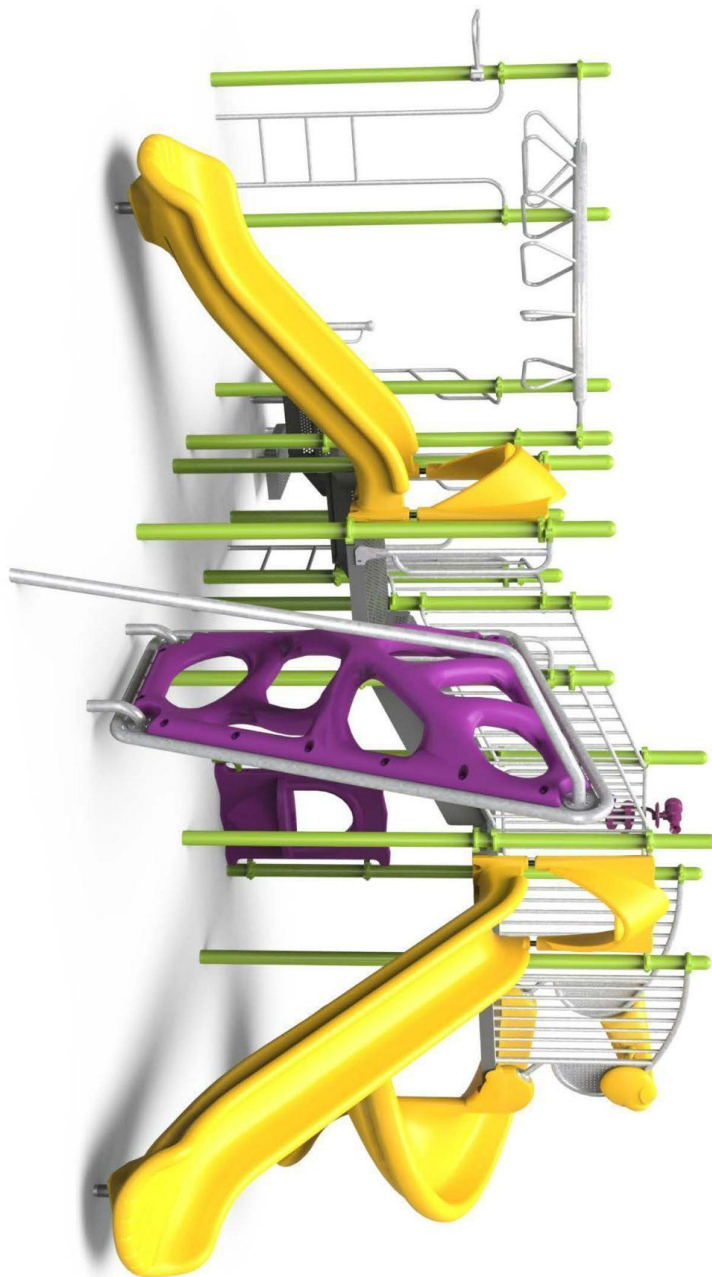
e. **VEHICLE REQUIREMENTS**

Vehicles used in the performance of this contract shall conform to DOT and Public Safety published regulations and shall meet all weight, height and other restrictions as set forth by those agencies.

4. **EVALUATION OF BIDS**

Bids submitted in accordance with the terms specified herein shall be evaluated based on the price offered.

SOW Attachment 1



350-2077

350-2077

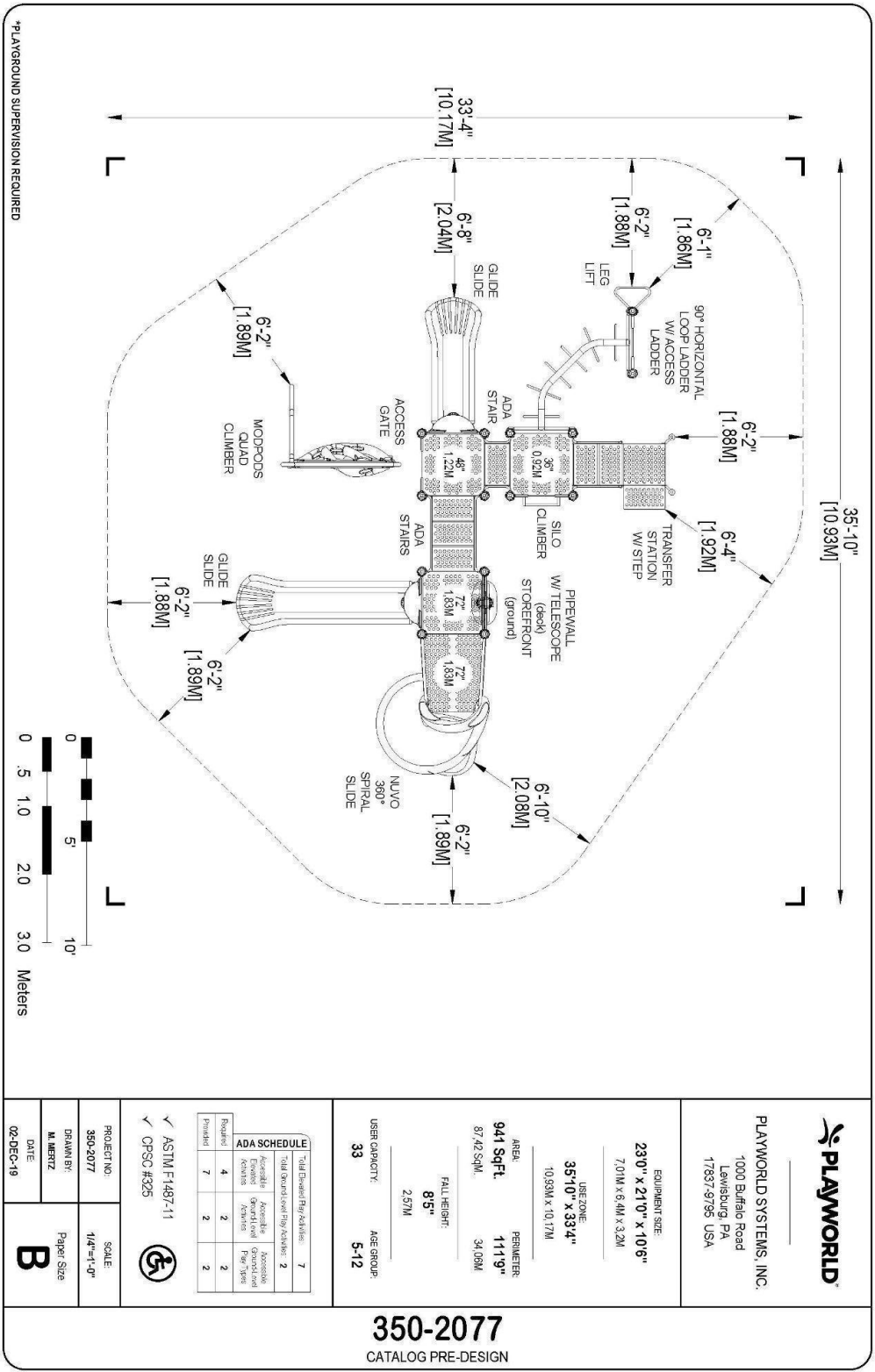
Equipment Manufacturer
PLAYWORLD
The world needs play.

350-2077

350-2077

Equipment Manufacturer





PLAYWORLD SYSTEMS, INC.
1000 Buffalo Road
Lewisburg, PA
17837-9795 USA

EQUIPMENT SIZE:
23'0" x 21'0" x 10'6"
7.01M x 6.4M x 3.2M

USE ZONE:
35'10" x 33'4"
10.93M x 10.17M

AREA:
944 SqFt
87.42 SQM

PERIMETER:
111'9"
34.09M

FALL HEIGHT:
8'5"
2.57M

USER CAPACITY:
33

AGE GROUP:
5-12

| ADA SCHEDULE | | | | | |
|---------------------------------|------------|------------|------------|------------|------------|
| Total Elevated Play Activities: | | | 7 | | |
| Accessible | Accessible | Accessible | Accessible | Accessible | Accessible |
| Required | 4 | 2 | 2 | 2 | 2 |
| Provided | 7 | 2 | 2 | 2 | 2 |

✓ ASTM F1487-11
✓ OPSC #325

PROJECT NO:
350-2077

SCALE:
1/4"=1'-0"

DRAWN BY:
M. MERTZ

Paper Size:
B

DATE:
02-DEC-19

350-2077
CATALOG PRE-DESIGN

Color Me Confident

While color is a small detail in the larger scope of playground planning, it shouldn't be an afterthought. Colors can tell a story and evoke a feeling. They guide the eye and inspire play.

From warm, sunset shades that invigorate to cool, tropical tones that calm, there's a perfect combination for every play space.

Choosing a color palette can be fun, but it's also a lot of work. Not sure where to start? Try assigning certain colors to a material or type of activity. When in doubt, take inspiration from your environment, whether it's your school colors or the native flora and fauna. Don't be shy—color yourself confident.

Rotomolded Colors



2-Color Sheet Plastic



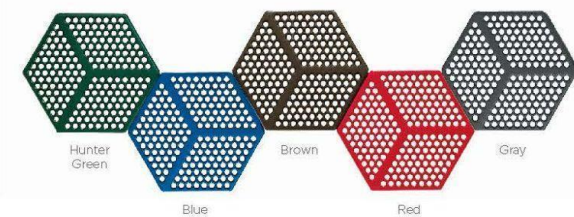
Pre-selected color palettes streamline the ordering process and allow us to provide exceptionally great prices on select product lines.



Component & Post Colors



Eco-Armor® Colors



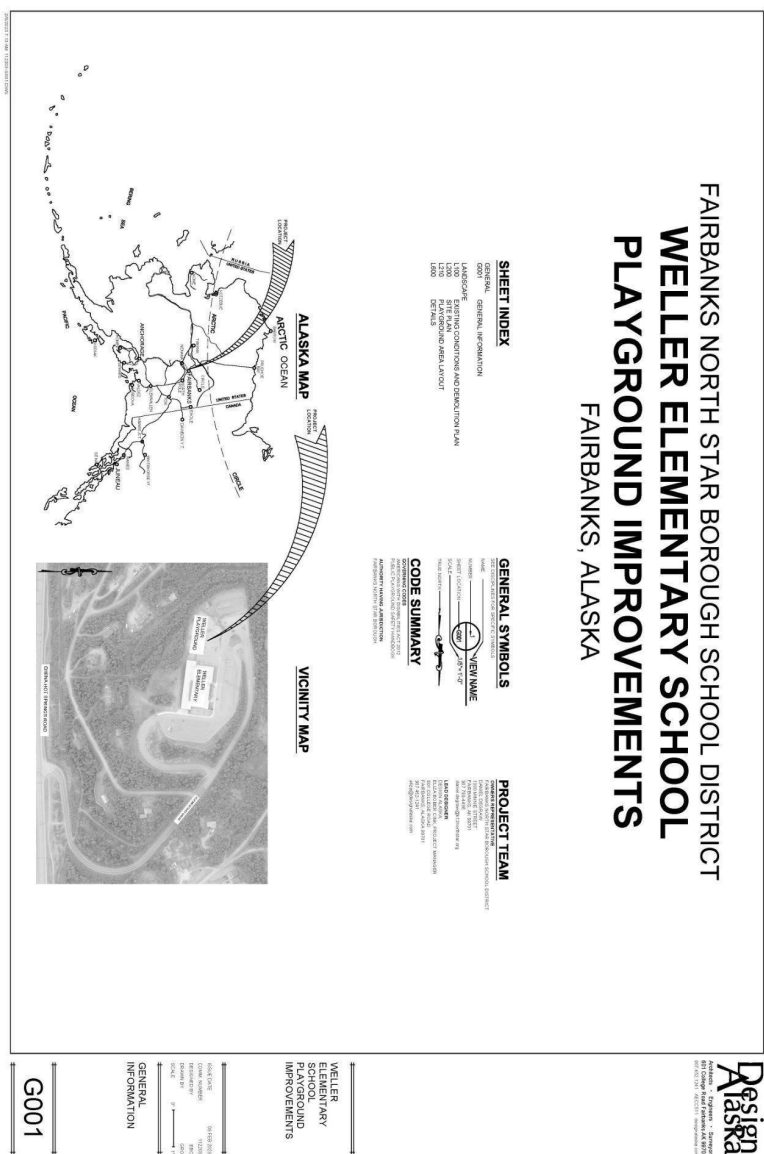
Boulders



Rope Colors



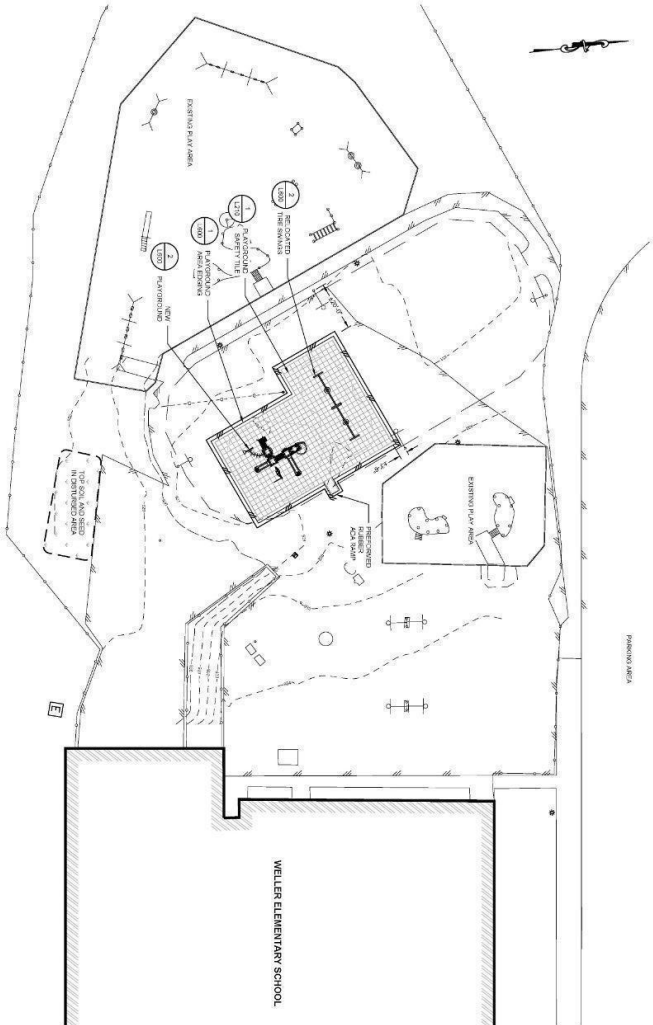
Colors are subject to change without notice. Color swatches are for reference only. For accurate color samples and the most up-to-date specifications consult your local representative. Playworld uses high quality materials and state-of-the-art manufacturing processes. Commercial playgrounds and products are subjected to years of environmental and solar exposure. Such extreme exposure takes its toll on paints and pigments, and all colors will fade over time. Playworld does not warrant against color fading or discoloration. It is important to properly maintain your playground to ensure its longevity. Depending on environmental conditions at your location, the installation of fabric shade structures may help to delay fading and discoloration.



[illegible]

EXISTING
CONDITIONS AND
DEMOLITION PLAN

L100



Design Alaska

- [illegible]

1. SEEDING SCHEDULE SHALL BE COORDINATED WITH LANDSCAPE ARCHITECT. PREFERRED SEEDING SEASON IS BETWEEN JUNE 1 AND AUGUST 15. DOMINANT SEEDING IS ALLOWED.
2. SUBMIT SOI REPORT ON TOPSOIL PROPOSED FOR USE.

[illegible]

- 1 (PERSONAL ARTICLES)
2 PERSONAL RECORDS
3 (PERSONAL ARTICLES)
4
5 APPLICATION FOR JOB
6
7
8
9
10
11
12
13
14
15
16
17
18
19
20
21
22
23
24
25
26
27
28
29
30
31
32
33
34
35
36
37
38
39
40
41
42
43
44
45
46
47
48
49
50
51
52
53
54
55
56
57
58
59
60
61
62
63
64
65
66
67
68
69
70
71
72
73
74
75
76
77
78
79
80
81
82
83
84
85
86
87
88
89
90
91
92
93
94
95
96
97
98
99
100
101
102
103
104
105
106
107
108
109
110
111
112
113
114
115
116
117
118
119
120
121
122
123
124
125
126
127
128
129
130
131
132
133
134
135
136
137
138
139
140
141
142
143
144
145
146
147
148
149
150
151
152
153
154
155
156
157
158
159
160
161
162
163
164
165
166
167
168
169
170
171
172
173
174
175
176
177
178
179
180
181
182
183
184
185
186
187
188
189
190
191
192
193
194
195
196
197
198
199
200
201
202
203
204
205
206
207
208
209
210
211
212
213
214
215
216
217
218
219
220
221
222
223
224
225
226
227
228
229
230
231
232
233
234
235
236
237
238
239
240
241
242
243
244
245
246
247
248
249
250
251
252
253
254
255
256
257
258
259
260
261
262
263
264
265
266
267
268
269
270
271
272
273
274
275
276
277
278
279
280
281
282
283
284
285
286
287
288
289
290
291
292
293
294
295
296
297
298
299
300
301
302
303
304
305
306
307
308
309
310
311
312
313
314
315
316
317
318
319
320
321
322
323
324
325
326
327
328
329
330
331
332
333
334
335
336
337
338
339
340
341
342
343
344
345
346
347
348
349
350
351
352
353
354
355
356
357
358
359
360
361
362
363
364
365
366
367
368
369
370
371
372
373
374
375
376
377
378
379
380
381
382
383
384
385
386
387
388
389
390
391
392
393
394
395
396
397
398
399
400
401
402
403
404
405
406
407
408
409
410
411
412
413
414
415
416
417
418
419
420
421
422
423
424
425
426
427
428
429
430
431
432
433
434
435
436
437
438
439
440
441
442
443
444
445
446
447
448
449
450
451
452
453
454
455
456
457
458
459
460
461
462
463
464
465
466
467
468
469
470
471
472
473
474
475
476
477
478
479
480
481
482
483
484
485
486
487
488
489
490
491
492
493
494
495
496
497
498
499
500
501
502
503
504
505
506
507
508
509
510
511
512
513
514
515
516
517
518
519
520
521
522
523
524
525
526
527
528
529
530
531
532
533
534
535
536
537
538
539
540
541
542
543
544
545
546
547
548
549
550
551
552
553
554
555
556
557
558
559
560
561
562
563
564
565
566
567
568
569
570
571
572
573
574
575
576
577
578
579
580
581
582
583
584
585
586
587
588
589
590
591
592
593
594
595
596
597
598
599
600
601
602
603
604
605
606
607
608
609
610
611
612
613
614
615
616
617
618
619
620
621
622
623
624
625
626
627
628
629
630
631
632
633
634
635
636
637
638
639
640
641
642
643
644
645
646
647
648
649
650
651
652
653
654
655
656
657
658
659
660
661
662
663
664
665
666
667
668
669
670
671
672
673
674
675
676
677
678
679
680
681
682
683
684
685
686
687
688
689
690
691
692
693
694
695
696
697
698
699
700
701
702
703
704
705
706
707
708
709
710
711
712
713
714
715
716
717
718
719
720
721
722
723
724
725
726
727
728
729
730
731
732
733
734
735
736
737
738
739
740
741
742
743
744
745
746
747
748
749
750
751
752
753
754
755
756
757
758
759
760
761
762
763
764
765
766
767
768
769
770
771
772
773
774
775
776
777
778
779
780
781
782
783
784
785
786
787
788
789
790
791
792
793
794
795
796
797
798
799
800
801
802
803
804
805
806
807
808
809
810
811
812
813
814
815
816
817
818
819
820
821
822
823
824
825
826
827
828
829
830
831
832
833
834
835
836
837

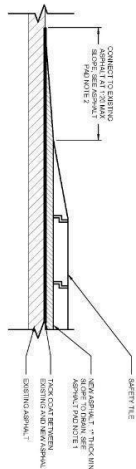
1. DIMENSIONS SHOWN ARE FOR INFORMATION ONLY. CONSTRUCTION SHALL PLACE PLAY AREAS WITHIN THE EXISTING APPROXIMATE LAND AS LONG AS THE FOLLOWING CONDITIONS ARE MET:
 - 1.1. AREA CREATING RESULT AFTER IMPROVEMENTS ARE IN PLACE
 - 1.2. THERE ARE NO OBSTRUCTIONS INSIDE THE PALL ZONE, COVERED OR ON GRADE
- 1.3. SLOPE OF REEFER PLAY AREA, NETTS AND MAX SLOPES SHALL BE 3:1 (VERTICAL TO HORIZONTAL)

SITE PLAN

L200



L210



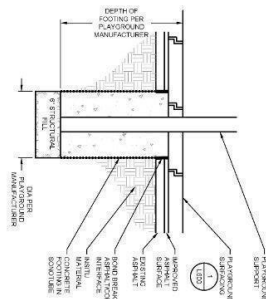
- ASPHALT PAD NOTES**
1. PAVEMENT 1 SHALL BE 4 IN. THICK.
 2. PAVEMENT 2 SHALL BE 4 IN. THICK.
 3. THE THICK COAT BETWEEN PAVEMENT 1 AND PAVEMENT 2 SHALL BE 1 IN. THICK.
 4. THE THICK COAT BETWEEN PAVEMENT 1 AND PAVEMENT 2 SHALL BE 1 IN. THICK.
 5. THE THICK COAT BETWEEN PAVEMENT 1 AND PAVEMENT 2 SHALL BE 1 IN. THICK.
 6. THE THICK COAT BETWEEN PAVEMENT 1 AND PAVEMENT 2 SHALL BE 1 IN. THICK.
 7. THE THICK COAT BETWEEN PAVEMENT 1 AND PAVEMENT 2 SHALL BE 1 IN. THICK.

1 ASPHALT IMPROVEMENTS

1.000 N.T.S.

ASPHALT PAVEMENT NOTES

1. PAVEMENT 1 SHALL BE 4 IN. THICK.
2. PAVEMENT 2 SHALL BE 4 IN. THICK.
3. THE THICK COAT BETWEEN PAVEMENT 1 AND PAVEMENT 2 SHALL BE 1 IN. THICK.
4. THE THICK COAT BETWEEN PAVEMENT 1 AND PAVEMENT 2 SHALL BE 1 IN. THICK.
5. THE THICK COAT BETWEEN PAVEMENT 1 AND PAVEMENT 2 SHALL BE 1 IN. THICK.
6. THE THICK COAT BETWEEN PAVEMENT 1 AND PAVEMENT 2 SHALL BE 1 IN. THICK.
7. THE THICK COAT BETWEEN PAVEMENT 1 AND PAVEMENT 2 SHALL BE 1 IN. THICK.



- CONCRETE NOTES**
1. PAVEMENT SHALL BE 4 IN. THICK.
 2. PAVEMENT SHALL BE 4 IN. THICK.
 3. THE THICK COAT BETWEEN PAVEMENT 1 AND PAVEMENT 2 SHALL BE 1 IN. THICK.
 4. THE THICK COAT BETWEEN PAVEMENT 1 AND PAVEMENT 2 SHALL BE 1 IN. THICK.
 5. THE THICK COAT BETWEEN PAVEMENT 1 AND PAVEMENT 2 SHALL BE 1 IN. THICK.
 6. THE THICK COAT BETWEEN PAVEMENT 1 AND PAVEMENT 2 SHALL BE 1 IN. THICK.
 7. THE THICK COAT BETWEEN PAVEMENT 1 AND PAVEMENT 2 SHALL BE 1 IN. THICK.

2 PLAYGROUND FOUNDATION DETAIL

1.000 T=1"



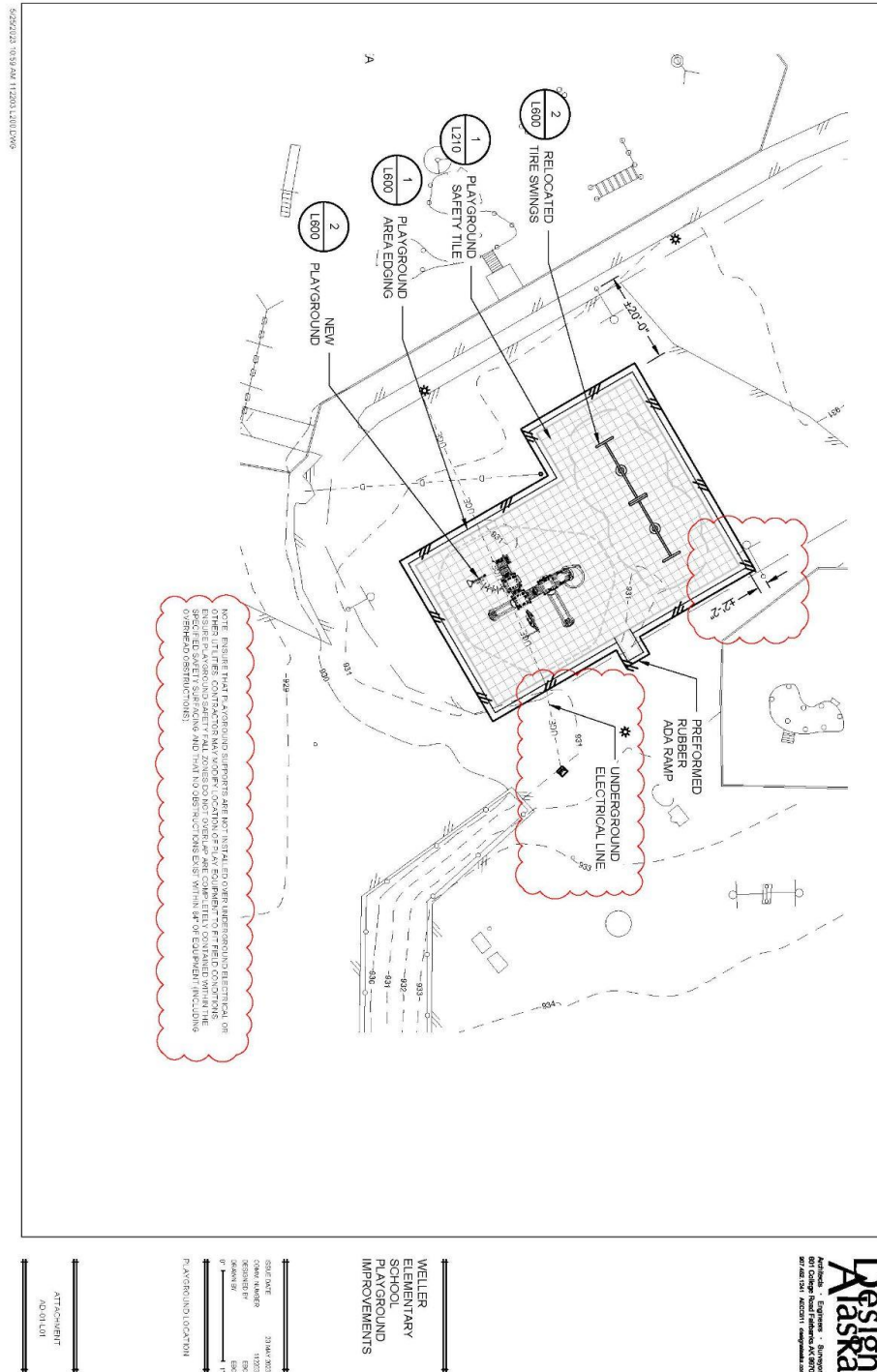
Design Alaska
Architects - Engineers - Surveyors
2020 424 1241 422281 422281-001

WELLER
ELEMENTARY
SCHOOL
PLAYGROUND
IMPROVEMENTS

SCALE: 1" = 1'-0"
DATE: 10/15/2018
DRAWN BY: JMD
CHECKED BY: JMD
SCALE: 1" = 1'-0"

L600

Statement of Work Attachment 3





MINIMUM RATES OF PAY For Laborers and Mechanics

Effective April 1, 2023

Issue 46

PAMPHLET No. 600

Title 36. Public Contracts
AS 36.05

DEPARTMENT OF LABOR
AND WORKFORCE DEVELOPMENT

Wage and Hour

- This page intentionally left blank -



THE STATE
of ALASKA
GOVERNOR MIKE DUNLEAVY

Department of Labor and Workforce Development

Office of the Commissioner

Post Office Box 111149
Juneau, Alaska 99811
Main: 907.465.2700
Fax: 907.465-2784

April 1, 2023

TO ALL CONTRACTING AGENCIES:

At the Alaska Department of Labor and Workforce Development our goal is putting Alaskans to work. This pamphlet is designed to help contractors awarded public construction contracts understand the most significant laws of the State of Alaska pertaining to prevailing wage.

This pamphlet identifies current prevailing wage rates for public construction contracts (any construction projects awarded for the State of Alaska or its political subdivisions, such as local governments and certain non-profit organizations). Because these rates may change in a subsequent determination, please be sure you are using the appropriate rates. The rates published in this edition become effective April 1, 2023.

The prevailing wage rates contained in this pamphlet are applicable to public construction projects with a final bid date of April 11, 2023, or later. As the law now provides, these rates will remain stable during the life of a contract or for 24 calendar months, whichever is shorter. **The 24-month period begins on the date the prime contract is awarded.** Upon expiration of the initial 24-month period, the latest wage rates issued by the department shall become effective for a subsequent 24-month period or until the original contract is completed, whichever occurs first. This process shall be repeated until the original contract is completed.

The term "original contract" means the signed contract that resulted from the original bid and any amendments, including changes of work scope, additions, extensions, change orders, and other instruments agreed to by the parties that have not been subject to subsequent open bid procedures.

If a higher federal rate is required due to partial federal funding or other federal participation, the higher rate must be paid.

For additional copies of this pamphlet go to: <http://labor.state.ak.us/lss/pamp600.htm>

For questions regarding prevailing wage or employment preference requirements, please contact the nearest Wage and Hour office. These offices are listed on Page x.

Sincerely,

A handwritten signature in blue ink that reads "Catherine Muñoz".

Catherine Muñoz
Acting Commissioner

- This page intentionally left blank -

Table of Contents

Excerpts from Alaska Law

| | |
|---|----|
| Sec. 36.05.005. Applicability..... | iv |
| Sec. 36.05.010. Wage rates on public construction..... | iv |
| Sec. 36.05.040. Filing schedule of employees, wages paid and other information | iv |
| Sec. 36.05.045. Notice of work and completion; withholding of payment | iv |
| Sec. 36.05.060. Penalty for violation of this chapter | v |
| Sec. 36.05.070. Wage rates in specifications and contracts for public works | v |
| Sec. 36.05.080. Failure to pay agreed wages | v |
| Sec. 36.05.090. Payment of wages from withheld payments and listing contractors who violate contracts | v |
| Sec. 36.05.900. Definition..... | vi |

Excerpts from Alaska Administrative Code

| | |
|--|-----|
| 8 AAC 30.051. Purpose | vi |
| 8 AAC 30.052. Board and lodging; remote sites | vi |
| 8 AAC 30.054. Per diem instead of board and lodging | vi |
| 8 AAC 30.056. Alternative arrangement..... | vii |
| 8 AAC 30.900. General definitions (selected excerpts)..... | vii |

Additional Information

| | |
|--|------|
| Per Diem | vii |
| Laborer Classification Clarification..... | viii |
| Apprentice Rates..... | viii |
| Fringe Benefit Plans..... | viii |
| Special Prevailing Wage Rate Determination..... | ix |
| Alaska Employment Preference Information..... | ix |
| Labor Standards and Safety Notice Requests | x |
| Debarment List | x |

Wage Rates Pages 1-26

Shipyard Rate Addendum.....Pages 27

Note to Readers: The statutes and administrative regulations listed in this publication were taken from the official codes, as of the effective date of the publication. However, there may be errors or omissions that have not been identified and changes that occurred after the publication was printed. This publication is intended as an informational guide only and is not intended to serve as a precise statement of the statutes and regulations of the State of Alaska. To be certain of current laws and regulations, please refer to the official codes.

EXCERPTS FROM ALASKA LAW

Sec. 36.05.005. Applicability.

This chapter applies only to a public construction contract that exceeds \$25,000.

Sec. 36.05.010. Wage rates on public construction.

A contractor or subcontractor who performs work on a public construction contract in the state shall pay not less than the current prevailing rate of wages for work of a similar nature in the region in which the work is done. The current prevailing rate of wages is that contained in the latest determination of prevailing rate of wages issued by the Department of Labor and Workforce Development at least 10 days before the final date for submission of bids for the contract. The rate shall remain in effect for the life of the contract or for 24 calendar months, whichever is shorter. At the end of the initial 24-month period, if new wage determinations have been issued by the department, the latest wage determination shall become effective for the next 24-month period or until the contract is completed, whichever occurs first. This process shall be repeated until the contract is completed.

Sec. 36.05.040. Filing schedule of employees, wages paid, and other information.

All contractors or subcontractors who perform work on a public construction contract for the state or for a political subdivision of the state shall, before the Friday of every second week, file with the Department of Labor and Workforce Development a sworn affidavit for the previous reporting period, setting out in detail the number of persons employed, wages paid, job classification of each employee, hours worked each day and week, and other information on a form provided by the Department of Labor and Workforce Development.

Sec. 36.05.045. Notice of work and completion; withholding of payment.

- (a) Before commencing work on a public construction contract, the person entering into the contract with a contracting agency shall designate a primary contractor for purposes of this section. Before work commences, the primary contractor shall file a notice of work with the Department of Labor and Workforce Development. The notice of work must list work to be performed under the public construction contract by each contractor who will perform any portion of work on the contract and the contract price being paid to each contractor. The primary contractor shall pay all filing fees for each contractor performing work on the contract, including a filing fee based on the contract price being paid for work performed by the primary contractor's employees. The filing fee payable shall be the sum of all fees calculated for each contractor. The filing fee shall be one percent of each contractor's contract price. The total filing fee payable by the primary contractor under this subsection may not exceed \$5,000. In this subsection, "contractor" means an employer who is using employees to perform work on the public construction contract under the contract or a subcontract.
- (b) Upon completion of all work on the public construction contract, the primary contractor shall file with the Department of Labor and Workforce Development a notice of completion together with payment of any additional filing fees owed due to increased contract amounts. Within 30 days after the department's receipt of the primary contractor's notice of completion, the department shall inform the contracting agency of the amount, if any, to be withheld from the final payment.
- (c) A contracting agency
 - (1) may release final payment of a public construction contract to the extent that the agency has received verification from the Department of Labor and Workforce Development that
 - (A) the primary contractor has complied with (a) and (b) of this section;
 - (B) the Department of Labor and Workforce Development is not conducting an investigation under this title; and
 - (C) the Department of Labor and Workforce Development has not issued a notice of a violation of this chapter to the primary contractor or any other contractors working on the public construction contract; and

- (2) shall withhold from the final payment an amount sufficient to pay the department's estimate of what may be needed to compensate the employees of any contractors under investigation on this construction contract, and any unpaid filing fees.
- (d) The notice and filing fee required under (a) of this section may be filed after work has begun if
 - (1) The public construction contract is for work undertaken in immediate response to an emergency; and
 - (2) The notice and fees are filed not later than 14 days after the work has begun.
- (e) A false statement made on a notice required by this section is punishable under AS 11.56.210.

Sec. 36.05.060. Penalty for violation of this chapter.

A contractor who violates this chapter is guilty of a misdemeanor and upon conviction is punishable by a fine of not less than \$100 nor more than \$1,000, or by imprisonment for not less than 10 days nor more than 90 days, or by both. Each day a violation exists constitutes a separate offense.

Sec. 36.05.070. Wage rates in specifications and contracts for public works.

- (a) The advertised specifications for a public construction contract that requires or involves the employment of mechanics, laborers, or field surveyors must contain a provision stating the minimum wages to be paid various classes of laborers, mechanics, or field surveyors and that the rate of wages shall be adjusted to the wage rate under AS 36.05.010.
- (b) Repealed by §17 ch 142 SLA 1972.
- (c) A public construction contract under (a) of this section must contain provisions that
 - (1) the contractor or subcontractors of the contractor shall pay all employees unconditionally and not less than once a week;
 - (2) wages may not be less than those stated in the advertised specifications, regardless of the contractual relationship between the contractor or subcontractors and laborers, mechanics, or field surveyors;
 - (3) the scale of wages to be paid shall be posted by the contractor in a prominent and easily accessible place at the site of the work;
 - (4) the state or a political subdivision shall withhold so much of the accrued payments as is necessary to pay to laborers, mechanics, or field surveyors employed by the contractor or subcontractors the difference between
 - (A) the rates of wages required by the contract to be paid laborers, mechanics, or field surveyors on the work; and
 - (B) the rates of wages in fact received by laborers, mechanics, or field surveyors.

Sec. 36.05.080. Failure to pay agreed wages.

Every contract within the scope of AS 36.05.070 shall contain a provision that if it is found that a laborer, mechanic, or field surveyor employed by the contractor or subcontractor has been or is being paid a rate of wages less than the rate of wages required by the contract to be paid, the state or its political subdivision may, by written notice to the contractor, terminate the contractor's right to proceed with the work or the part of the work for which there is a failure to pay the required wages and to prosecute the work to completion by contract or otherwise, and the contractor and the contractor's sureties are liable to the state or its political subdivision for excess costs for completing the work.

Sec. 36.05.090. Payment of wages from withheld payments and listing contractors who violate contracts.

- (a) The state disbursing officer in the case of a state public construction contract and the local fiscal officer in the case of a political subdivision public construction contract shall pay directly to laborers, mechanics, or field surveyors from accrued payments withheld under the terms of the contract the wages due laborers, mechanics, or field surveyors under AS 36.05.070.
- (b) The state disbursing officer or the local fiscal officer shall distribute to all departments of the state government and to all political subdivisions of the state a list giving the names of persons who have disregarded their obligations to employees. A person appearing on this list and a firm, corporation, partnership, or association in which the person has an interest may not work as a contractor or

subcontractor on a public construction contract for the state or a political subdivision of the state until three years after the date of publication of the list. If the accrued payments withheld under the contract are insufficient to reimburse all the laborers, mechanics, or field surveyors with respect to whom there has been a failure to pay the wages required under AS 36.05.070, the laborers, mechanics, or field surveyors have the right of action or intervention or both against the contractor and the contractor's sureties conferred by law upon persons furnishing labor or materials, and in the proceedings it is not a defense that the laborers, mechanics, or field surveyors accepted or agreed to accept less than the required rate of wages or voluntarily made refunds.

Sec. 36.05.900. Definition.

In this chapter, "contracting agency" means the state or a political subdivision of the state that has entered into a public construction contract with a contractor.

EXCERPTS FROM ALASKA ADMINISTRATIVE CODE

Notice: Regulations relating to board and lodging and per diem went into effect on November 25, 2018. The new regulations are excerpted here

8 AAC 30.051. Purpose. The purpose of 8 AAC 30.052 – 8 AAC 30.056 is to ensure that wages paid to laborers, mechanics, and field surveyors do not fall below the prevailing rate of pay.

8 AAC 30.052. Board and lodging; remote sites. (a) A contractor on a public construction project located 65 or more road miles from the international airport closest to the project area in either Fairbanks, Juneau, or Anchorage, or that is inaccessible by road in a two-wheel drive vehicle, shall provide adequate board and lodging to each laborer, mechanic, or field surveyor while the person is employed on the project. If commercial lodging facilities are not available, the contractor shall provide temporary lodging facilities. Lodging facilities must comply with all applicable state and federal laws. For a highway project, the location of the project is measured from the midpoint of the project.

(b) A contractor is not required to provide board and lodging:

(1) to a laborer, mechanic, or field surveyor who is a domiciled resident of the project area; or

(2) on a laborer, mechanic, or field surveyor's scheduled days off, when the person can reasonably travel between the project and the person's permanent residence; for the purposes of this paragraph, "scheduled day off" means a day in which a person does not perform work on-site, is not required to remain at or near the job location for the benefit of the contractor, and is informed of the day off at least seven days before the day off.

(c) Upon a contractor's written request, the commissioner may waive the requirements of (a) of this section where:

(1) the project is inaccessible by road in a two-wheel drive vehicle, but the laborer, mechanic, or field surveyor can reasonably travel between the project and the person's permanent residence within one hour; or

(2) a laborer, mechanic, or field surveyor is not a domiciled resident of the project area, but has established permanent residence, with the intent to remain indefinitely, within 65 road miles of the project, or for a highway project, the mid-point of the project.

8 AAC 30.054. Per diem instead of board and lodging. (a) A contractor may pay a laborer, mechanic, or field surveyor per diem instead of providing board and lodging, when the following conditions are met:

(1) the department determines that per diem instead of board and lodging is an established practice for the work classification; the department shall publish and periodically revise its determinations in the pamphlet *Laborers and Mechanics Minimum Rates of Pay*;

(2) the contractor pays each laborer, mechanic, or field surveyor the appropriate per diem rate as published and periodically revised in the pamphlet *Laborers and Mechanics Minimum Rates of Pay*; and

- (3) the contractor pays the per diem to each laborer, mechanic, or field surveyor on the same day that wages are paid.
- (b) A contractor may not pay per diem instead of board and lodging on a highway project located
 - (1) west of Livengood on the Elliot Highway, AK-2;
 - (2) on the Dalton Highway, AK-11;
 - (3) north of milepost 20 on the Taylor Highway, AK-5;
 - (4) east of Chicken on the Top of the World Highway; or
 - (5) south of Tetlin Junction to the Alaska-Canada border on the Alaska Highway, AK-2.

8 AAC 30.056. Alternative arrangement. Upon a contractor's written request, the commissioner may approve an alternative board and lodging or per diem arrangement, provided

- (1) the arrangement does not reduce the laborer, mechanic, or field surveyor's wages below the prevailing wage rate; and
- (2) the laborer, mechanic, or field surveyor voluntarily enters into and signs the written arrangement; a labor organization representing laborers, mechanics, or field surveyors may enter into the written agreement on their behalf.

8 AAC 30.900. General definitions (selected excerpts only):

In this chapter and in AS 36

- (22) "domiciled resident" means a person living within 65 road miles of a public construction project, or in the case of a highway project, the mid-point of the project, for at least 12 consecutive months prior to the award of the public construction project;
- (23) "employed on the project" means the time period from the date the laborer, mechanic, or field surveyor first reports on-site to the project through the final date the person reports on-site to the project.

ADDITIONAL INFORMATION

PER DIEM

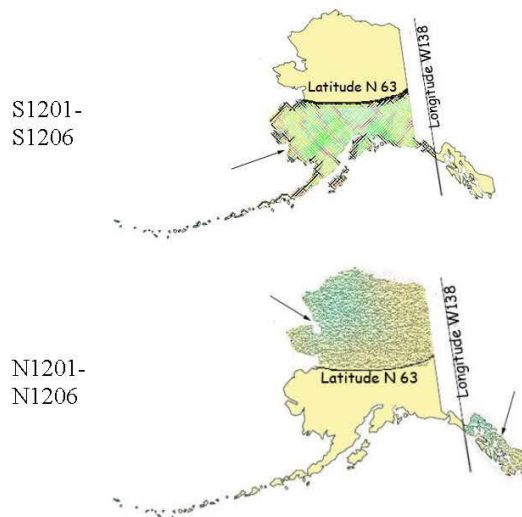
Notice: New regulations relating to board and lodging and per diem went into effect on November 25, 2018. The regulations provide a comprehensive set of requirements for the provision of board and lodging or per diem for workers on remote projects. Please refer to Alaska Administrative Code 8 AAC Chapter 30 and read the chapter carefully.

The Alaska Department of Labor and Workforce Development has determined that per diem is an established work practice for certain work classifications. These classifications are indicated throughout the Pamphlet by an asterisk (*) under the classification title. If all of the conditions of 8 AAC 30.054 are met, an employer may pay workers in these classifications per diem instead of providing board and lodging on a remote project.

Per Diem Rate: As of May 1st, 2019, the minimum per diem rate is \$100.00 per day, or part thereof, the worker is employed on the project. In the event that a contractor provides lodging facilities, but no meals, the department will accept a payment of \$48 per day for meals to meet the per diem requirements.

LABORER CLASSIFICATION CLARIFICATION

The laborer rates categorized in class code S1201-S1206 apply in one area of Alaska; the area that is south of N63 latitude and west of W138 Longitude. The laborer rates categorized in class code N1201-N1206 apply in two areas of Alaska; the Alaska areas north of N63 latitude and east of W138 longitude. The following graphic representations should assist with clarifying the applicable wage rate categories:



APPRENTICE RATES

Apprentice rates at less than the minimum prevailing rates may be paid to apprentices according to an apprentice program which has been registered and approved by the Commissioner of the Alaska Department of Labor and Workforce Development in writing or according to a bona fide apprenticeship program registered with the U.S. Department of Labor, Office of Apprenticeship Training. **Any employee listed on a payroll at an apprentice wage rate who is not registered as above shall be paid the journeyman prevailing minimum wage in that work classification.** Wage rates are based on prevailing crew makeup practices in Alaska and apply to work performed regardless of either the quality of the work performed by the employee or the titles or classifications which may be assigned to individual employees.

FRINGE BENEFIT PLANS

Contractors/subcontractors may compensate fringe benefits to their employees in any one of three methods. The fringe benefits may be paid into a union trust fund, into an approved benefit plan, or paid directly on the paycheck as gross wages.

Where fringe benefits are paid into approved plans, funds, or programs including union trust funds, the payments must be contributed at least monthly. If contractors submit their own payroll forms and are paying fringe benefits into approved plans, funds, or programs, the employer's certification must include, in addition to those requirements of 8 AAC 30.020(c), a statement that fringe benefit payments have been or will be paid at least monthly. Contractors who pay fringe benefits to a plan must ensure the plan is one approved by the Internal Revenue Service and that the plan meets the requirements of 8 AAC 30.025 (eff. 3/2/08) in order for payments to be credited toward the prevailing wage obligation.

SPECIAL PREVAILING WAGE RATE DETERMINATION

Special prevailing wage rate determinations may be requested for special projects or a special worker classification if the work to be performed does not conform to traditional public construction for which a prevailing wage rate has been established under 8 AAC 30.050(a) of this section. Requests for special wage rate determinations must be in writing and filed with the Commissioner at least 30 days before the award of the contract. An applicant for a special wage rate determination shall have the responsibility to support the necessity for the special rate. An application for a special wage rate determination filed under this section must contain:

- (1) a specification of the contract or project on which the special rates will apply and a description of the work to be performed;
- (2) a brief narrative explaining why special wage rates are necessary;
- (3) the job class or classes involved;
- (4) the special wage rates the applicant is requesting, including survey or other relevant wage data to support the requested rates;
- (5) the approximate number of employees who would be affected; and
- (6) any other information which might be helpful in determining if special wage rates are appropriate.

Requests made pursuant to the above should be addressed to:

Director
Alaska Department of Labor and Workforce Development
Labor Standards and Safety Division
Wage and Hour
P.O. Box 111149
Juneau, AK 99811-1149
-or-
Email: statewide.wagehour@alaska.gov

EMPLOYMENT PREFERENCE INFORMATION

In October 2019, the Alaska Attorney General issued a formal opinion stating that the Alaska Statutes 36.10.150 of the State's 90% Employment Preference law, also known as the Alaska Resident Hire law, violates both the U.S. and Alaska Constitutions. As a result, the state has stopped all enforcement activity.

A copy of the Attorney General opinion is found here:

http://law.alaska.gov/pdf/opinions/opinions_2019/19-005_AK-hire.pdf

Alaska Department of Labor and Workforce Development
Labor Standards and Safety Division
Wage and Hour
Web site: <http://labor.state.ak.us/lss/pamp600.htm>

| Anchorage | Juneau | Fairbanks |
|---|--|--|
| 1251 Muldoon Road, Suite 113 Anchorage, Alaska 99504-2098 Phone: (907) 269-4900 | PO Box 111149 Juneau, Alaska 99811 Phone: (907) 465-4842 | Regional State Office Building 675 7 th Ave., Station J-1 Fairbanks, Alaska 99701-4593 Phone: (907) 451-2886 |
| Email: statewide.wagehour@alaska.gov | Email: statewide.wagehour@alaska.gov | Email: statewide.wagehour@alaska.gov |

LABOR STANDARDS AND SAFETY NOTICE REQUESTS

If you would like to receive Wage and Hour or Mechanical Inspection **regulation notices** or **publications information**, they are available via electronic mail, by signing up in the GovDelivery System, <https://public.govdelivery.com/accounts/AKDOL/subscriber/new> and selecting topics *LSS – Wage and Hour – Forms and Publications*, *LSS – Mechanical Inspection Regulations*, or *LSS – Wage and Hour Regulations*.

Publications are also available online at <http://labor.alaska.gov/lss/home.htm>

DEBARMENT LIST

AS 36.05.090(b) states that "the state disbursing officer or the local fiscal officer shall distribute to all departments of the state government and to all political subdivisions of the state a list giving the names of persons who have disregarded their obligations to employees."

A person appearing on the following debarment list and a firm, corporation, partnership, or association in which the person has an interest may not work as a contractor or subcontractor on a public construction contract for the state or a political subdivision of the state for three years from the date of debarment.

Company Name

Debarment Expires

No companies are currently debarred.

Laborers' & Mechanics' Minimum Rates of Pay

| Class Code | Classification of Laborers & Mechanics | BHR | H&W | PEN | TRN | Other | Benefits | THR |
|--|--|-------|-------|-------|------|----------|----------|-------|
| Boilermakers | | | | | | | | |
| *See per diem note on last page | | | | | | | | |
| A0101 | Boilermaker (journeyman) | 48.15 | 8.57 | 18.40 | 2.15 | VAC 4.25 | SAF 0.34 | 81.86 |
| Bricklayers & Blocklayers | | | | | | | | |
| *See per diem note on last page | | | | | | | | |
| A0201 | Blocklayer | 42.01 | 9.00 | 10.20 | 0.62 | L&M 0.20 | | 62.03 |
| | Bricklayer | | | | | | | |
| | Marble or Stone Mason | | | | | | | |
| | Refractory Worker (Firebrick, Plastic, Castable, and Gunitite Refractory Applications) | | | | | | | |
| | Terrazzo Worker | | | | | | | |
| | Tile Setter | | | | | | | |
| A0202 | Tuck Pointer Caulker | 42.01 | 9.00 | 10.20 | 0.62 | L&M 0.20 | | 62.03 |
| | Cleaner (PCC) | | | | | | | |
| A0203 | Marble & Tile Finisher | 35.84 | 9.00 | 10.20 | 0.62 | L&M 0.20 | | 55.86 |
| | Terrazzo Finisher | | | | | | | |
| A0204 | Torginal Applicator | 35.84 | 9.00 | 10.20 | 0.62 | L&M 0.20 | | 55.86 |
| Carpenters, Region I (North of 63 latitude) | | | | | | | | |
| *See per diem note on last page | | | | | | | | |
| N0301 | Carpenter (journeyman) | 43.34 | 10.35 | 15.82 | 1.75 | L&M 0.20 | SAF 0.20 | 71.66 |
| | Lather/Drywall/Acoustical | | | | | | | |
| Carpenters, Region II (South of N63 latitude) | | | | | | | | |
| *See per diem note on last page | | | | | | | | |
| S0301 | Carpenter (journeyman) | 43.34 | 10.35 | 16.36 | 1.75 | L&M 0.20 | SAF 0.20 | 72.20 |
| | Lather/Drywall/Acoustical | | | | | | | |
| Cement Masons | | | | | | | | |
| *See per diem note on last page | | | | | | | | |

Wage benefits key: BHR=basic hourly rate; H&W=health and welfare; IAF=industry advancement fund; LEG=legal fund; L&M=labor/management fund; PEN=pension fund; SAF=safety; SUI=supplemental unemployment insurance; S&L=SUI & LEG combined; TRN=training; THR=total hourly rate; VAC=vacation

| Class Code | Classification of Laborers & Mechanics | BHR | H&W | PEN | TRN | Other Benefits | THR |
|--|--|-------|------|-------|------|------------------------|-------|
| Cement Masons | | | | | | | |
| *See per diem note on last page | | | | | | | |
| A0401 | Group I, including: | 44.43 | 8.80 | 11.80 | 1.53 | L&M 0.10 | 66.66 |
| | Application of Sealing Compound | | | | | | |
| | Application of Underlayment | | | | | | |
| | Building, General | | | | | | |
| | Cement Finisher | | | | | | |
| | Cement Mason (journeyman) | | | | | | |
| | Concrete | | | | | | |
| | Concrete Paving | | | | | | |
| | Concrete Polishing | | | | | | |
| | Concrete Repair | | | | | | |
| | Curb & Gutter, Sidewalk | | | | | | |
| | Curing of All Concrete | | | | | | |
| | General Concrete Pour Tender | | | | | | |
| | Grouting & Caulking of Tilt-Up Panels | | | | | | |
| | Grouting of All Plates | | | | | | |
| | Patching Concrete | | | | | | |
| | Screed Pin Setter | | | | | | |
| | Screeder or Rodder | | | | | | |
| | Spackling/Skim Coating | | | | | | |
| A0402 | Group II, including: | 44.43 | 8.80 | 11.80 | 1.53 | L&M 0.10 | 66.66 |
| | Form Setter | | | | | | |
| A0403 | Group III, including: | 44.43 | 8.80 | 11.80 | 1.53 | L&M 0.10 | 66.66 |
| | Concrete Saw Cutter Operator (All Control Joints and Self-powered) | | | | | | |
| | Curb & Gutter Machine | | | | | | |
| | Floor Grinder | | | | | | |
| | Pneumatic Power Tools | | | | | | |
| | Power Chipping & Bushing | | | | | | |
| | Sand Blasting Architectural Finish | | | | | | |
| | Screed & Rodding Machine Operator | | | | | | |
| | Troweling Machine Operator (all concrete surfaces) | | | | | | |
| A0404 | Group IV, including: | 44.43 | 8.80 | 11.80 | 1.53 | L&M 0.10 | 66.66 |
| | Acoustical or Imitation Acoustical Finish | | | | | | |
| | Application of All Composition Mastic | | | | | | |
| | Application of All Epoxy Material | | | | | | |
| | Application of All Plastic Material | | | | | | |
| | Finish Colored Concrete | | | | | | |
| | Guniting Nozzleman | | | | | | |
| | Hand Powered Grinder | | | | | | |
| Wage benefits key: BHR=basic hourly rate; H&W=health and welfare; IAF=industry advancement fund; LEG=legal fund; L&M=labor/management fund; PEN=pension fund; SAF=safety; SUI=supplemental unemployment insurance; S&L=SUI & LEG combined; TRN=training; THR=total hourly rate; VAC=vacation | | | | | | | |

| Class Code | Classification of Laborers & Mechanics | BHR | H&W | PEN | TRN | Other Benefits | THR |
|--|---|-------|-------|-------|------|-----------------------------|-------|
| Cement Masons | | | | | | | |
| *See per diem note on last page | | | | | | | |
| A0404 | Group IV, including: | 44.43 | 8.80 | 11.80 | 1.53 | L&M 0.10 | 66.66 |
| | Preparing, scratching and browsing of all ceilings and walls, finished with terrazo or tile | | | | | | |
| | Tunnel Worker | | | | | | |
| A0405 | Group V, including: | 44.43 | 8.80 | 11.80 | 1.53 | L&M 0.10 | 66.66 |
| | Casting and finishing | | | | | | |
| | EIFS Systems | | | | | | |
| | Finishing of all interior and exterior plastering | | | | | | |
| | Fireproofing (Pryocrete, Cafco, Albi-Clad, sprayed fiberglass) | | | | | | |
| | Gypsum, Portland Cement | | | | | | |
| | Kindred material and products | | | | | | |
| | Operation and control of all types of plastering machines, including power tools and floats, used by the industry | | | | | | |
| | Overcoating and maintenance of interior/exterior plaster surfaces | | | | | | |
| | Plasterer | | | | | | |
| | Veneer plastering process (Rapid Plaster, U.S.G. "Imperial Systems", and Pabcoat Systems") | | | | | | |
| | Venetian plaster and color-integrated Italian/Middle-Eastern line plaster | | | | | | |
| Culinary Workers | | | | | | | |
| A0501 | Baker/Cook | 29.95 | 7.53 | 8.68 | | LEG | 46.16 |
| A0503 | General Helper | 25.82 | 7.53 | 8.68 | | LEG | 42.03 |
| | Housekeeper | | | | | | |
| | Janitor | | | | | | |
| | Kitchen Helper | | | | | | |
| A0504 | Head Cook | 29.95 | 7.53 | 8.68 | | LEG | 46.16 |
| A0505 | Head Housekeeper | 26.20 | 7.53 | 8.68 | | LEG | 42.41 |
| | Head Kitchen Help | | | | | | |
| Dredgemen | | | | | | | |
| *See per diem note on last page | | | | | | | |
| A0601 | Assistant Engineer | 46.91 | 11.40 | 14.75 | 1.00 | L&M 0.10 0.05 | 74.21 |
| | Craneman | | | | | | |
| Wage benefits key: BHR=basic hourly rate; H&W=health and welfare; IAF=industry advancement fund; LEG=legal fund; L&M=labor/management fund; PEN=pension fund; SAF=safety; SUI=supplemental unemployment insurance; S&L=SUI & LEG combined; TRN=training; THR=total hourly rate; VAC=vacation | | | | | | | |

| Class Code | Classification of Laborers & Mechanics | BHR | H&W | PEN | TRN | Other | Benefits | THR |
|---------------------------------|---|-------|-------|-------|------|---------|----------|--------|
| Dredgemen | | | | | | | | |
| *See per diem note on last page | | | | | | | | |
| A0601 | Assistant Engineer | 46.91 | 11.40 | 14.75 | 1.00 | L&M | | 74.21 |
| | Electrical Generator Operator (primary pump/power barge/dredge) | | | | | | | |
| | Engineer | | | | | | | |
| | Welder | | | | | | | |
| A0602 | Assistant Mate (deckhand) | 45.65 | 11.40 | 14.75 | 1.00 | L&M | | 72.95 |
| A0603 | Fireman | 46.13 | 11.40 | 14.75 | 1.00 | L&M | | 73.43 |
| A0605 | Leverman Clamshell | 49.64 | 11.40 | 14.75 | 1.00 | L&M | | 76.94 |
| A0606 | Leverman Hydraulic | 47.74 | 11.40 | 14.75 | 1.00 | L&M | | 75.04 |
| A0607 | Mate & Boatman | 46.91 | 11.40 | 14.75 | 1.00 | L&M | | 74.21 |
| A0608 | Oiler (dredge) | 46.13 | 11.40 | 14.75 | 1.00 | L&M | | 73.43 |
| Electricians | | | | | | | | |
| *See per diem note on last page | | | | | | | | |
| A0701 | Inside Cable Splicer | 44.44 | 14.40 | 14.22 | 0.95 | L&M LEG | | 74.41 |
| A0702 | Inside Journeyman Wireman, including: | 44.44 | 14.40 | 14.22 | 0.95 | L&M LEG | | 74.41 |
| | Technicians (including use of drones in electrical construction) | | | | | | | |
| A0703 | Power Cable Splicer | 65.19 | 14.40 | 19.15 | 0.95 | L&M LEG | | 100.09 |
| A0704 | Tele Com Cable Splicer | 52.53 | 14.40 | 17.98 | 0.95 | L&M LEG | | 86.26 |
| A0705 | Power Journeyman Lineman, including: | 63.44 | 14.40 | 19.09 | 0.95 | L&M LEG | | 98.28 |
| | Power Equipment Operator | | | | | | | |
| | Technician (including use of drones in electrical construction) | | | | | | | |
| A0706 | Tele Com Journeyman Lineman, including: | 50.78 | 14.40 | 17.92 | 0.95 | L&M LEG | | 84.45 |
| | Technician (including use of drones in telecommunications construction) | | | | | | | |
| | Tele Com Equipment Operator | | | | | | | |

Wage benefits key: BHR=basic hourly rate; H&W=health and welfare; IAF=industry advancement fund; LEG=legal fund; L&M=labor/management fund; PEN=pension fund; SAF=safety; SUI=supplemental unemployment insurance; S&L=SUI & LEG combined; TRN=training; THR=total hourly rate; VAC=vacation

| Class Code | Classification of Laborers & Mechanics | BHR | H&W | PEN | TRN | Other | Benefits | THR |
|---|---|-------|-------|-------|------|-------|----------|--------|
| Electricians | | | | | | | | |
| *See per diem note on last page | | | | | | | | |
| A0707 | Straight Line Installer - Repairman | 50.78 | 14.40 | 17.92 | 0.95 | L&M | LEG | 84.45 |
| | | | | | | 0.25 | 0.15 | |
| A0708 | Powderman | 61.44 | 14.40 | 19.03 | 0.95 | L&M | LEG | 96.22 |
| | | | | | | 0.25 | 0.15 | |
| A0710 | Material Handler | 28.07 | 14.02 | 5.84 | 0.15 | L&M | LEG | 48.38 |
| | | | | | | 0.15 | 0.15 | |
| A0712 | Tree Trimmer Groundman | 31.78 | 14.40 | 14.30 | 0.15 | L&M | LEG | 60.93 |
| | | | | | | 0.15 | 0.15 | |
| A0713 | Journeyman Tree Trimmer | 40.71 | 14.40 | 14.57 | 0.15 | L&M | LEG | 70.13 |
| | | | | | | 0.15 | 0.15 | |
| A0714 | Vegetation Control Sprayer | 44.26 | 14.40 | 14.68 | 0.15 | L&M | LEG | 73.79 |
| | | | | | | 0.15 | 0.15 | |
| A0715 | Inside Journeyman Communications CO/PBX | 44.44 | 14.40 | 14.22 | 0.95 | L&M | LEG | 74.41 |
| | | | | | | 0.25 | 0.15 | |
| Elevator Workers | | | | | | | | |
| *See per diem note on last page | | | | | | | | |
| A0802 | Elevator Constructor | 46.08 | 16.07 | 20.56 | 0.70 | L&M | VAC | 89.52 |
| | | | | | | 1.00 | 5.11 | |
| A0803 | Elevator Constructor Mechanic | 65.83 | 16.07 | 20.56 | 0.70 | L&M | VAC | 111.46 |
| | | | | | | 1.00 | 7.30 | |
| Heat & Frost Insulators/Asbestos Workers | | | | | | | | |
| *See per diem note on last page | | | | | | | | |
| A0902 | Asbestos Abatement-Mechanical Systems | 41.35 | 9.24 | 11.12 | 1.50 | IAF | LML | 63.40 |
| | | | | | | 0.14 | 0.05 | |
| A0903 | Asbestos Abatement/General Demolition All Systems | 41.35 | 9.24 | 11.12 | 1.50 | IAF | LML | 63.40 |
| | | | | | | 0.14 | 0.05 | |
| A0904 | Insulator, Group II | 41.35 | 9.24 | 11.12 | 1.50 | IAF | LML | 63.40 |
| | | | | | | 0.14 | 0.05 | |
| A0905 | Fire Stop | 41.35 | 9.24 | 11.12 | 1.50 | IAF | LML | 63.40 |
| | | | | | | 0.14 | 0.05 | |
| Ironworkers | | | | | | | | |
| *See per diem note on last page | | | | | | | | |
| A1101 | Ironworkers, including: | 41.49 | 9.91 | 24.95 | 0.77 | L&M | IAF | 77.56 |
| | | | | | | 0.20 | 0.24 | |

Wage benefits key: BHR=basic hourly rate; H&W=health and welfare; IAF=industry advancement fund; LEG=legal fund; L&M=labor/management fund; PEN=pension fund; SAF=safety; SUI=supplemental unemployment insurance; S&L=SUI & LEG combined; TRN=training; THR=total hourly rate; VAC=vacation

| Class Code | Classification of Laborers & Mechanics | BHR | H&W | PEN | TRN | Other | Benefits | THR |
|--|---|-------|------|-------|------|----------------|------------|-------|
| IronWorkers | | | | | | | | |
| *See per diem note on last page | | | | | | | | |
| A1101 | Ironworkers, including: | 41.49 | 9.91 | 24.95 | 0.77 | L&M | IAF | |
| | | | | | | 0.20 | 0.24 | 77.56 |
| | Bender Operators | | | | | | | |
| | Bridge & Structural | | | | | | | |
| | Hangar Doors | | | | | | | |
| | Hollow Metal Doors | | | | | | | |
| | Industrial Doors | | | | | | | |
| | Machinery Mover | | | | | | | |
| | Ornamental | | | | | | | |
| | Reinforcing | | | | | | | |
| | Rigger | | | | | | | |
| | Sheeter | | | | | | | |
| | Signalman | | | | | | | |
| | Stage Rigger | | | | | | | |
| | Toxic Haz-Mat Work | | | | | | | |
| | Welder | | | | | | | |
| A1102 | Helicopter | 42.49 | 9.91 | 24.95 | 0.77 | L&M | IAF | |
| | | | | | | 0.20 | 0.24 | 78.56 |
| | Helicopter (used for rigging and setting) | | | | | | | |
| | Tower (energy producing windmill type towers to include nacelle and blades) | | | | | | | |
| A1103 | Fence/Barrier Installer | 37.99 | 9.91 | 24.95 | 0.77 | L&M | IAF | |
| | | | | | | 0.20 | 0.24 | 74.06 |
| A1104 | Guard Rail Layout Man | 38.73 | 9.91 | 24.95 | 0.77 | L&M | IAF | |
| | | | | | | 0.20 | 0.24 | 74.80 |
| A1105 | Guard Rail Installer | 38.99 | 9.91 | 24.95 | 0.77 | L&M | IAF | |
| | | | | | | 0.20 | 0.24 | 75.06 |
| Laborers (The Alaska areas north of N63 latitude and east of W138 longitude) | | | | | | | | |
| *See per diem note on last page | | | | | | | | |
| N1201 | Group I, including: | 36.00 | 9.55 | 21.16 | 1.65 | L&M | LEG | |
| | | | | | | 0.30 | 0.20 | 68.86 |
| | Asphalt Worker (shovelman, plant crew) | | | | | | | |
| | Brush Cutter | | | | | | | |
| | Camp Maintenance Laborer | | | | | | | |
| | Carpenter Tender or Helper | | | | | | | |
| | Choke Setter, Hook Tender, Rigger, Signalman | | | | | | | |
| | Concrete Labor (curb & gutter, chute handler, curing, grouting, screeding) | | | | | | | |
| | Crusher Plant Laborer | | | | | | | |
| | Demolition Laborer | | | | | | | |
| Wage benefits key: BHR=basic hourly rate; H&W=health and welfare; IAF=industry advancement fund; LEG=legal fund; L&M=labor/management fund; PEN=pension fund; SAF=safety; SUI=supplemental unemployment insurance; S&L=SUI & LEG combined; TRN=training; THR=total hourly rate; VAC=vacation | | | | | | | | |

| Class Code | Classification of Laborers & Mechanics | BHR | H&W | PEN | TRN | Other Benefits | THR |
|---|--|-----|-----|-----|-----|----------------|-----|
| Laborers (The Alaska areas north of N63 latitude and east of W138 longitude) | | | | | | | |
| *See per diem note on last page | | | | | | | |

| | | | | | | L&M | LEG | |
|--------------|---|-------|------|-------|------|------|------|-------|
| N1201 | Group I, including: | 36.00 | 9.55 | 21.16 | 1.65 | 0.30 | 0.20 | 68.86 |
| | Ditch Digger | | | | | | | |
| | Dumpman | | | | | | | |
| | Environmental Laborer (hazard/toxic waste, oil spill) | | | | | | | |
| | Fence Installer | | | | | | | |
| | Fire Watch Laborer | | | | | | | |
| | Flagman | | | | | | | |
| | Form Stripper | | | | | | | |
| | General Laborer | | | | | | | |
| | Guardrail Laborer, Bridge Rail Installer | | | | | | | |
| | Hydro Seeder Nozzleman | | | | | | | |
| | Laborer, Building | | | | | | | |
| | Landscaper or Planter | | | | | | | |
| | Laying of Mortarless Decorative Block (retaining walls, flowered decorative block 4 feet or less - highway or landscape work) | | | | | | | |
| | Material Handler | | | | | | | |
| | Pneumatic or Power Tools | | | | | | | |
| | Portable or Chemical Toilet Serviceman | | | | | | | |
| | Pump Man or Mixer Man | | | | | | | |
| | Railroad Track Laborer | | | | | | | |
| | Sandblast, Pot Tender | | | | | | | |
| | Saw Tender | | | | | | | |
| | Slurry Work | | | | | | | |
| | Steam Cleaner Operator | | | | | | | |
| | Steam Point or Water Jet Operator | | | | | | | |
| | Storm Water Pollution Protection Plan Worker (SWPPP Worker - erosion and sediment control Laborer) | | | | | | | |
| | Tank Cleaning | | | | | | | |
| | Utiliwalk & Utilidor Laborer | | | | | | | |
| | Watchman (construction projects) | | | | | | | |
| | Window Cleaner | | | | | | | |

| | | | | | | L&M | LEG | |
|--------------|---|-------|------|-------|------|------|------|-------|
| N1202 | Group II, including: | 37.00 | 9.55 | 21.16 | 1.65 | 0.30 | 0.20 | 69.86 |
| | Burning & Cutting Torch | | | | | | | |
| | Cement or Lime Dumper or Handler (sack or bulk) | | | | | | | |
| | Certified Erosion Sediment Control Lead (CESCL Laborer) | | | | | | | |
| | Choker Splicer | | | | | | | |
| | Chucktender (wagon, air-track & hydraulic drills) | | | | | | | |
| | Concrete Laborer (power buggy, concrete saws, pumpcrete nozzleman, vibratorman) | | | | | | | |
| | Culvert Pipe Laborer | | | | | | | |
| | Cured Inplace Pipelayer | | | | | | | |

Wage benefits key: BHR=basic hourly rate; H&W=health and welfare; IAF=industry advancement fund; LEG=legal fund; L&M=labor/management fund; PEN=pension fund; SAF=safety; SUI=supplemental unemployment insurance; S&L=SUI & LEG combined; TRN=training; THR=total hourly rate; VAC=vacation

| Class Code | Classification of Laborers & Mechanics | BHR | H&W | PEN | TRN | Other | Benefits | THR |
|---|--|-------|------|-------|------|-------|----------|-------|
| Laborers (The Alaska areas north of N63 latitude and east of W138 longitude) | | | | | | | | |
| *See per diem note on last page | | | | | | | | |
| N1202 | Group II, including: | 37.00 | 9.55 | 21.16 | 1.65 | L&M | LEG | |
| | | | | | | 0.30 | 0.20 | 69.86 |
| | Environmental Laborer (asbestos, marine work) | | | | | | | |
| | Floor Preparation, Core Drilling | | | | | | | |
| | Foam Gun or Foam Machine Operator | | | | | | | |
| | Green Cutter (dam work) | | | | | | | |
| | Guniting Operator | | | | | | | |
| | Hod Carrier | | | | | | | |
| | Jackhammer/Chipping Gun or Pavement Breaker | | | | | | | |
| | Laser Instrument Operator | | | | | | | |
| | Laying of Mortarless Decorative Block (retaining walls, flowered decorative block over 4 feet - highway or landscape work) | | | | | | | |
| | Mason Tender & Mud Mixer (sewer work) | | | | | | | |
| | Pilot Car | | | | | | | |
| | Pipelayer Helper | | | | | | | |
| | Plasterer, Bricklayer & Cement Finisher Tender | | | | | | | |
| | Powderman Helper | | | | | | | |
| | Power Saw Operator | | | | | | | |
| | Railroad Switch Layout Laborer | | | | | | | |
| | Sandblaster | | | | | | | |
| | Scaffold Building & Erecting | | | | | | | |
| | Sewer Caulker | | | | | | | |
| | Sewer Plant Maintenance Man | | | | | | | |
| | Thermal Plastic Applicator | | | | | | | |
| | Timber Faller, Chainsaw Operator, Filer | | | | | | | |
| | Timberman | | | | | | | |
| N1203 | Group III, including: | 37.90 | 9.55 | 21.16 | 1.65 | L&M | LEG | |
| | | | | | | 0.30 | 0.20 | 70.76 |
| | Bit Grinder | | | | | | | |
| | Camera/Tool/Video Operator | | | | | | | |
| | Guardrail Machine Operator | | | | | | | |
| | High Rigger & Tree Topper | | | | | | | |
| | High Scaler | | | | | | | |
| | Multiplate | | | | | | | |
| | Plastic Welding | | | | | | | |
| | Slurry Seal Squeegee Man | | | | | | | |
| | Traffic Control Supervisor | | | | | | | |
| | Welding Certified (in connection with laborer's work) | | | | | | | |
| N1204 | Group IIIA | 41.78 | 9.55 | 21.16 | 1.65 | L&M | LEG | |
| | | | | | | 0.30 | 0.20 | 74.64 |
| | Asphalt Raker, Asphalt Belly Dump Lay Down | | | | | | | |
| | Drill Doctor (in the field) | | | | | | | |

Wage benefits key: BHR=basic hourly rate; H&W=health and welfare; IAF=industry advancement fund; LEG=legal fund; L&M=labor/management fund; PEN=pension fund; SAF=safety; SUI=supplemental unemployment insurance; S&L=SUI & LEG combined; TRN=training; THR=total hourly rate; VAC=vacation

| Class Code | Classification of Laborers & Mechanics | BHR | H&W | PEN | TRN | Other | Benefits | THR |
|--|--|-------|------|-------|------|-------|----------|-------|
| Laborers (The Alaska areas north of N63 latitude and east of W138 longitude) | | | | | | | | |
| *See per diem note on last page | | | | | | | | |
| N1204 | Group IIIA | 41.78 | 9.55 | 21.16 | 1.65 | L&M | LEG | |
| | | | | | | 0.30 | 0.20 | 74.64 |
| | Driller (including, but not limited to wagon drills, air-track drills, hydraulic drills) | | | | | | | |
| | Pioneer Drilling & Drilling Off Tugger (all type drills) | | | | | | | |
| | Pipelayers | | | | | | | |
| | Powderman (Employee Possessor) | | | | | | | |
| | Storm Water Pollution Protection Plan Specialist (SWPPP Specialist) | | | | | | | |
| | Traffic Control Supervisor, DOT Qualified | | | | | | | |
| N1205 | Group IV | 25.57 | 9.55 | 21.16 | 1.65 | L&M | LEG | |
| | | | | | | 0.30 | 0.20 | 58.43 |
| | Final Building Cleanup | | | | | | | |
| | Permanent Yard Worker | | | | | | | |
| N1206 | Group IIIB | 47.36 | 5.50 | 21.16 | 1.65 | L&M | LEG | |
| | | | | | | 0.30 | 0.20 | 76.17 |
| | Driller (including, but not limited to wagon drills, air-track drills, hydraulic drills)(over 5,000 hours) | | | | | | | |
| | Federal Powderman (Responsible Person in Charge) | | | | | | | |
| | Grade Checking (setting or transferring of grade marks, line and grade, GPS, drones) | | | | | | | |
| | Pioneer Drilling & Drilling Off Tugger (all type drills)(over 5,000 hours) | | | | | | | |
| | Stake Hopper | | | | | | | |
| Laborers (The area that is south of N63 latitude and west of W138 longitude) | | | | | | | | |
| *See per diem note on last page | | | | | | | | |
| S1201 | Group I, including: | 36.00 | 9.55 | 21.16 | 1.65 | L&M | LEG | |
| | | | | | | 0.30 | 0.20 | 68.86 |
| | Asphalt Worker (shovelman, plant crew) | | | | | | | |
| | Brush Cutter | | | | | | | |
| | Camp Maintenance Laborer | | | | | | | |
| | Carpenter Tender or Helper | | | | | | | |
| | Choke Setter, Hook Tender, Rigger, Signalman | | | | | | | |
| | Concrete Labor (curb & gutter, chute handler, curing, grouting, screeding) | | | | | | | |
| | Crusher Plant Laborer | | | | | | | |
| | Demolition Laborer | | | | | | | |
| | Ditch Digger | | | | | | | |
| | Dumpman | | | | | | | |
| | Environmental Laborer (hazard/toxic waste, oil spill) | | | | | | | |
| | Fence Installer | | | | | | | |
| | Fire Watch Laborer | | | | | | | |
| | Flagman | | | | | | | |
| Wage benefits key: BHR=basic hourly rate; H&W=health and welfare; IAF=industry advancement fund; LEG=legal fund; L&M=labor/management fund; PEN=pension fund; SAF=safety; SUI=supplemental unemployment insurance; S&L=SUI & LEG combined; TRN=training; THR=total hourly rate; VAC=vacation | | | | | | | | |

| Class Code | Classification of Laborers & Mechanics | BHR | H&W | PEN | TRN | Other | Benefits | THR |
|---|---|-------|------|-------|------|-------|----------|-------|
| Laborers (The area that is south of N63 latitude and west of W138 longitude) | | | | | | | | |
| *See per diem note on last page | | | | | | | | |
| S1201 | Group I, including: | 36.00 | 9.55 | 21.16 | 1.65 | L&M | LEG | |
| | | | | | | 0.30 | 0.20 | 68.86 |
| | Form Stripper | | | | | | | |
| | General Laborer | | | | | | | |
| | Guardrail Laborer, Bridge Rail Installer | | | | | | | |
| | Hydro Seeder Nozzleman | | | | | | | |
| | Laborer, Building | | | | | | | |
| | Landscape or Planter | | | | | | | |
| | Laying of Mortarless Decorative Block (retaining walls, flowered decorative block 4 feet or less - highway or landscape work) | | | | | | | |
| | Material Handler | | | | | | | |
| | Pneumatic or Power Tools | | | | | | | |
| | Portable or Chemical Toilet Serviceman | | | | | | | |
| | Pump Man or Mixer Man | | | | | | | |
| | Railroad Track Laborer | | | | | | | |
| | Sandblast, Pot Tender | | | | | | | |
| | Saw Tender | | | | | | | |
| | Slurry Work | | | | | | | |
| | Steam Cleaner Operator | | | | | | | |
| | Steam Point or Water Jet Operator | | | | | | | |
| | Storm Water Pollution Protection Plan Worker (SWPPP Worker - erosion and sediment control Laborer) | | | | | | | |
| | Tank Cleaning | | | | | | | |
| | Utiliwalk & Utilidor Laborer | | | | | | | |
| | Watchman (construction projects) | | | | | | | |
| | Window Cleaner | | | | | | | |
| S1202 | Group II, including: | 37.00 | 9.55 | 21.16 | 1.65 | L&M | LEG | |
| | | | | | | 0.30 | 0.20 | 69.86 |
| | Burning & Cutting Torch | | | | | | | |
| | Cement or Lime Dumper or Handler (sack or bulk) | | | | | | | |
| | Certified Erosion Sediment Control Lead (CESCL Laborer) | | | | | | | |
| | Choker Splicer | | | | | | | |
| | Chucktender (wagon, air-track & hydraulic drills) | | | | | | | |
| | Concrete Laborer (power buggy, concrete saws, pumpcrete nozzleman, vibratorman) | | | | | | | |
| | Culvert Pipe Laborer | | | | | | | |
| | Cured Inplace Pipelayer | | | | | | | |
| | Environmental Laborer (asbestos, marine work) | | | | | | | |
| | Floor Preparation, Core Drilling | | | | | | | |
| | Foam Gun or Foam Machine Operator | | | | | | | |
| | Green Cutter (dam work) | | | | | | | |
| | Guniting Operator | | | | | | | |
| | Hod Carrier | | | | | | | |

Wage benefits key: BHR=basic hourly rate; H&W=health and welfare; IAF=industry advancement fund; LEG=legal fund; L&M=labor/management fund; PEN=pension fund; SAF=safety; SUI=supplemental unemployment insurance; S&L=SUI & LEG combined; TRN=training; THR=total hourly rate; VAC=vacation

| Class Code | Classification of Laborers & Mechanics | BHR | H&W | PEN | TRN | Other Benefits | THR |
|--|--|-------|------|-------|------|----------------------|-------|
| Laborers (The area that is south of N63 latitude and west of W138 longitude) | | | | | | | |
| *See per diem note on last page | | | | | | | |
| S1202 | Group II, including: | 37.00 | 9.55 | 21.16 | 1.65 | L&M 0.30 LEG 0.20 | 69.86 |
| | Jackhammer/Chipping Gun or Pavement Breaker | | | | | | |
| | Laser Instrument Operator | | | | | | |
| | Laying of Mortarless Decorative Block (retaining walls, flowered decorative block over 4 feet - highway or landscape work) | | | | | | |
| | Mason Tender & Mud Mixer (sewer work) | | | | | | |
| | Pilot Car | | | | | | |
| | Pipelayer Helper | | | | | | |
| | Plasterer, Bricklayer & Cement Finisher Tender | | | | | | |
| | Powderman Helper | | | | | | |
| | Power Saw Operator | | | | | | |
| | Railroad Switch Layout Laborer | | | | | | |
| | Sandblaster | | | | | | |
| | Scaffold Building & Erecting | | | | | | |
| | Sewer Caulker | | | | | | |
| | Sewer Plant Maintenance Man | | | | | | |
| | Thermal Plastic Applicator | | | | | | |
| | Timber Faller, Chainsaw Operator, Filer | | | | | | |
| | Timberman | | | | | | |
| S1203 | Group III, including: | 37.90 | 9.55 | 21.16 | 1.65 | L&M 0.30 LEG 0.20 | 70.76 |
| | Bit Grinder | | | | | | |
| | Camera/Tool/Video Operator | | | | | | |
| | Guardrail Machine Operator | | | | | | |
| | High Rigger & Tree Topper | | | | | | |
| | High Scaler | | | | | | |
| | Multiplate | | | | | | |
| | Plastic Welding | | | | | | |
| | Slurry Seal Squeegee Man | | | | | | |
| | Traffic Control Supervisor | | | | | | |
| | Welding Certified (in connection with laborer's work) | | | | | | |
| S1204 | Group IIIA | 41.78 | 9.55 | 21.16 | 1.65 | L&M 0.30 LEG 0.20 | 74.64 |
| | Asphalt Raker, Asphalt Belly Dump Lay Down | | | | | | |
| | Drill Doctor (in the field) | | | | | | |
| | Driller (including, but not limited to wagon drills, air-track drills, hydraulic drills) | | | | | | |
| | Pioneer Drilling & Drilling Off Tugger (all type drills) | | | | | | |
| | Pipelayers | | | | | | |
| | Powderman (Employee Possessor) | | | | | | |
| | Storm Water Pollution Protection Plan Specialist (SWPPP Specialist) | | | | | | |
| Wage benefits key: BHR=basic hourly rate; H&W=health and welfare; IAF=industry advancement fund; LEG=legal fund; L&M=labor/management fund; PEN=pension fund; SAF=safety; SUI=supplemental unemployment insurance; S&L=SUI & LEG combined; TRN=training; THR=total hourly rate; VAC=vacation | | | | | | | |

| Class Code | Classification of Laborers & Mechanics | BHR | H&W | PEN | TRN | Other Benefits | THR |
|--|--|-------|-------|-------|------|----------------------|-------|
| Laborers (The area that is south of N63 latitude and west of W138 longitude) | | | | | | | |
| *See per diem note on last page | | | | | | | |
| S1204 | Group IIIA | 41.78 | 9.55 | 21.16 | 1.65 | L&M 0.30 LEG 0.20 | 74.64 |
| | Traffic Control Supervisor, DOT Qualified | | | | | | |
| S1205 | Group IV | 25.57 | 9.55 | 21.16 | 1.65 | L&M 0.30 LEG 0.20 | 58.43 |
| | Final Building Cleanup | | | | | | |
| | Permanent Yard Worker | | | | | | |
| S1206 | Group IIIB | 47.36 | 5.50 | 21.16 | 1.65 | L&M 0.30 LEG 0.20 | 76.17 |
| | Driller (including, but not limited to wagon drills, air-track drills, hydraulic drills)(over 5,000 hours) | | | | | | |
| | Federal Powderman (Responsible Person in Charge) | | | | | | |
| | Grade Checking (setting or transferring of grade marks, line and grade, GPS, drones) | | | | | | |
| | Pioneer Drilling & Drilling Off Tugger (all type drills)(over 5,000 hours) | | | | | | |
| | Stake Hopper | | | | | | |
| Millwrights | | | | | | | |
| *See per diem note on last page | | | | | | | |
| A1251 | Millwright (journeyman) | 46.48 | 10.35 | 12.87 | 1.10 | L&M 0.40 0.05 | 71.25 |
| A1252 | Millwright Welder | 47.48 | 10.35 | 12.87 | 1.10 | L&M 0.40 0.05 | 72.25 |
| Painters, Region I (North of N63 latitude) | | | | | | | |
| *See per diem note on last page | | | | | | | |
| N1301 | Group I, including: | 36.08 | 9.27 | 15.10 | 1.08 | L&M 0.07 | 61.60 |
| | Brush | | | | | | |
| | General Painter | | | | | | |
| | Hand Taping | | | | | | |
| | Hazardous Material Handler | | | | | | |
| | Lead-Based Paint Abatement | | | | | | |
| | Roll | | | | | | |
| N1302 | Group II, including: | 36.60 | 9.27 | 15.10 | 1.08 | L&M 0.07 | 62.12 |
| | Bridge Painter | | | | | | |
| | Epoxy Applicator | | | | | | |
| | General Drywall Finisher | | | | | | |
| | Hand/Spray Texturing | | | | | | |
| | Industrial Coatings Specialist | | | | | | |
| Wage benefits key: BHR=basic hourly rate; H&W=health and welfare; IAF=industry advancement fund; LEG=legal fund; L&M=labor/management fund; PEN=pension fund; SAF=safety; SUI=supplemental unemployment insurance; S&L=SUI & LEG combined; TRN=training; THR=total hourly rate; VAC=vacation | | | | | | | |

| Class Code | Classification of Laborers & Mechanics | BHR | H&W | PEN | TRN | Other Benefits | THR |
|--|--|-------|-------|-------|------|------------------------|-------|
| Painters, Region I (North of N63 latitude) | | | | | | | |
| *See per diem note on last page | | | | | | | |
| N1302 | Group II, including: | 36.60 | 9.27 | 15.10 | 1.08 | L&M 0.07 | 62.12 |
| | Machine/Automatic Taping | | | | | | |
| | Pot Tender | | | | | | |
| | Sandblasting | | | | | | |
| | Specialty Painter | | | | | | |
| | Spray | | | | | | |
| | Structural Steel Painter | | | | | | |
| | Wallpaper/Vinyl Hanger | | | | | | |
| N1304 | Group IV, including: | 42.74 | 9.27 | 18.21 | 1.05 | 0.05 | 71.32 |
| | Glazier | | | | | | |
| | Storefront/Automatic Door Mechanic | | | | | | |
| N1305 | Group V, including: | 39.86 | 9.27 | 5.00 | 1.10 | 0.10 | 55.33 |
| | Carpet Installer | | | | | | |
| | Floor Coverer | | | | | | |
| | Heat Weld/Cove Base | | | | | | |
| | Linoleum/Soft Tile Installer | | | | | | |
| N1306 | Group VI, including: | 50.44 | 10.23 | 5.00 | 1.10 | 0.10 | 66.87 |
| | Traffic Control Striper | | | | | | |
| Painters, Region II (South of N63 latitude) | | | | | | | |
| *See per diem note on last page | | | | | | | |
| S1301 | Group I, including : | 33.22 | 9.27 | 15.95 | 1.08 | L&M 0.07 | 59.59 |
| | Brush | | | | | | |
| | General Painter | | | | | | |
| | Hand Taping | | | | | | |
| | Hazardous Material Handler | | | | | | |
| | Lead-Based Paint Abatement | | | | | | |
| | Roll | | | | | | |
| | Spray | | | | | | |
| S1302 | Group II, including : | 34.47 | 9.27 | 15.95 | 1.08 | L&M 0.07 | 60.84 |
| | General Drywall Finisher | | | | | | |
| | Hand/Spray Texturing | | | | | | |
| | Machine/Automatic Taping | | | | | | |
| | Wallpaper/Vinyl Hanger | | | | | | |

Wage benefits key: BHR=basic hourly rate; H&W=health and welfare; IAF=industry advancement fund; LEG=legal fund; L&M=labor/management fund; PEN=pension fund; SAF=safety; SUI=supplemental unemployment insurance; S&L=SUI & LEG combined; TRN=training; THR=total hourly rate; VAC=vacation

| Class Code | Classification of Laborers & Mechanics | BHR | H&W | PEN | TRN | Other | Benefits | THR |
|--|---|-------|-------|-------|------|----------------|----------|--------|
| Painters, Region II (South of N63 latitude) | | | | | | | | |
| *See per diem note on last page | | | | | | | | |
| S1303 | Group III, including : | 34.57 | 9.27 | 15.95 | 1.08 | L&M | | |
| | | | | | | 0.07 | | 60.94 |
| | Bridge Painter | | | | | | | |
| | Epoxy Applicator | | | | | | | |
| | Industrial Coatings Specialist | | | | | | | |
| | Pot Tender | | | | | | | |
| | Sandblasting | | | | | | | |
| | Specialty Painter | | | | | | | |
| | Structural Steel Painter | | | | | | | |
| S1304 | Group IV, including: | 42.95 | 9.27 | 17.25 | 1.08 | L&M | | |
| | | | | | | 0.07 | | 70.62 |
| | Glazier | | | | | | | |
| | Storefront/Automatic Door Mechanic | | | | | | | |
| S1305 | Group V, including: | 39.86 | 9.27 | 5.00 | 1.10 | L&M | | |
| | | | | | | 0.10 | | 55.33 |
| | Carpet Installer | | | | | | | |
| | Floor Coverer | | | | | | | |
| | Heat Weld/Cove Base | | | | | | | |
| | Linoleum/Soft Tile Installer | | | | | | | |
| S1306 | Group VI, including: | 50.44 | 10.23 | 5.00 | 1.10 | L&M | | |
| | | | | | | 0.10 | | 66.87 |
| | Traffic Control Striper | | | | | | | |
| Piledrivers | | | | | | | | |
| *See per diem note on last page | | | | | | | | |
| A1401 | Piledriver | 43.34 | 10.35 | 15.82 | 1.75 | L&M | | |
| | | | | | | 0.20 | 0.20 | 71.66 |
| | Assistant Dive Tender | | | | | | | |
| | Carpenter/Piledriver | | | | | | | |
| | Rigger | | | | | | | |
| | Sheet Stabber | | | | | | | |
| | Skiff Operator | | | | | | | |
| A1402 | Piledriver-Welder/Toxic Worker | 44.34 | 10.35 | 15.82 | 1.75 | L&M | | |
| | | | | | | 0.20 | 0.20 | 72.66 |
| A1403 | Remotely Operated Vehicle Pilot/Technician | 47.65 | 10.35 | 15.82 | 1.75 | L&M | | |
| | | | | | | 0.20 | 0.20 | 75.97 |
| | Single Atmosphere Suit, Bell or Submersible Pilot | | | | | | | |
| A1404 | Diver (working) **See note on last page | 87.45 | 10.35 | 15.82 | 1.75 | L&M | | |
| | | | | | | 0.20 | 0.20 | 115.77 |

Wage benefits key: BHR=basic hourly rate; H&W=health and welfare; IAF=industry advancement fund; LEG=legal fund; L&M=labor/management fund; PEN=pension fund; SAF=safety; SUI=supplemental unemployment insurance; S&L=SUI & LEG combined; TRN=training; THR=total hourly rate; VAC=vacation

| Class Code | Classification of Laborers & Mechanics | BHR | H&W | PEN | TRN | Other | Benefits | THR |
|---|--|-------|-------|-------|------|-------|----------|-------|
| Piledrivers | | | | | | | | |
| *See per diem note on last page | | | | | | | | |
| A1405 | Diver (standby) **See note on last page | 47.65 | 10.35 | 15.82 | 1.75 | L&M | IAF | 75.97 |
| | | | | | | 0.20 | 0.20 | |
| A1406 | Dive Tender **See note on last page | 46.65 | 10.35 | 15.82 | 1.75 | L&M | IAF | 74.97 |
| | | | | | | 0.20 | 0.20 | |
| A1407 | Welder (American Welding Society, Certified Welding Inspector) | 48.90 | 10.35 | 15.82 | 1.75 | L&M | IAF | 77.22 |
| | | | | | | 0.20 | 0.20 | |
| Plumbers, Region I (North of N63 latitude) | | | | | | | | |
| *See per diem note on last page | | | | | | | | |
| N1501 | Journeyman Pipefitter | 46.06 | 11.75 | 17.45 | 1.50 | L&M | S&L | 77.51 |
| | Plumber | | | | | 0.75 | | |
| | Welder | | | | | | | |
| Plumbers, Region II (South of N63 latitude) | | | | | | | | |
| *See per diem note on last page | | | | | | | | |
| S1501 | Journeyman Pipefitter | 41.00 | 11.88 | 15.27 | 1.55 | L&M | | 69.90 |
| | Plumber | | | | | 0.20 | | |
| | Welder | | | | | | | |
| Plumbers, Region IIA (1st Judicial District) | | | | | | | | |
| *See per diem note on last page | | | | | | | | |
| X1501 | Journeyman Pipefitter | 41.50 | 13.67 | 11.75 | 2.70 | L&M | | 69.86 |
| | Plumber | | | | | 0.24 | | |
| | Welder | | | | | | | |
| Power Equipment Operators | | | | | | | | |
| *See per diem note on last page | | | | | | | | |
| A1601 | Group I, including: | 47.74 | 11.40 | 14.75 | 1.00 | L&M | | 75.04 |
| | Asphalt Roller: Breakdown, Intermediate, and Finish | | | | | 0.10 | 0.05 | |
| | Back Filler | | | | | | | |
| | Barrier Machine (Zipper) | | | | | | | |
| | Beltcrete with Power Pack & similar conveyors | | | | | | | |
| | Bending Machine | | | | | | | |
| | Boat Coxswain | | | | | | | |
| | Bulldozer | | | | | | | |
| | Cableways, Highlines & Cablecars | | | | | | | |

Wage benefits key: BHR=basic hourly rate; H&W=health and welfare; IAF=industry advancement fund; LEG=legal fund; L&M=labor/management fund; PEN=pension fund; SAF=safety; SUI=supplemental unemployment insurance; S&L=SUI & LEG combined; TRN=training; THR=total hourly rate; VAC=vacation

| Class Code | Classification of Laborers & Mechanics | BHR | H&W | PEN | TRN | Other Benefits | THR |
|----------------------------------|--|-----|-----|-----|-----|----------------|-----|
| Power Equipment Operators | | | | | | | |
| *See per diem note on last page | | | | | | | |

| | | | | | | L&M | | |
|--------------|--|-------|-------|-------|------|------|------|-------|
| A1601 | Group I, including: | 47.74 | 11.40 | 14.75 | 1.00 | 0.10 | 0.05 | 75.04 |
| | Cleaning Machine | | | | | | | |
| | Coating Machine | | | | | | | |
| | Concrete Hydro Blaster | | | | | | | |
| | Cranes (45 tons & under or 150 feet of boom & under (including jib & attachments)) | | | | | | | |
| | (a) Hydralifts or Transporters, (all track or truck type) | | | | | | | |
| | (b) Derricks | | | | | | | |
| | (c) Overhead | | | | | | | |
| | Crushers | | | | | | | |
| | Deck Winches, Double Drum | | | | | | | |
| | Ditching or Trenching Machine (16 inch or over) | | | | | | | |
| | Drag Scraper, Yarder, and similar types | | | | | | | |
| | Drilling Machines, Core, Cable, Rotary and Exploration | | | | | | | |
| | Finishing Machine Operator, Concrete Paving, Laser Screed, Sidewalk, Curb & Gutter Machine | | | | | | | |
| | Grade Checker and/or Line and Grade including Drone | | | | | | | |
| | Helicopters | | | | | | | |
| | Hover Craft, Flex Craft, Loadmaster, Air Cushion, All-Terrain Vehicle, Rollagon, Bargecable, Nodwell, & Snow Cat | | | | | | | |
| | Hydro Ax, Feller Buncher & similar | | | | | | | |
| | Hydro Excavation (Vac-Truck and Similar) | | | | | | | |
| | Loaders (2 1/2 yards through 5 yards, including all attachments): | | | | | | | |
| | (a) Forklifts (with telescopic boom & swing attachment) | | | | | | | |
| | (b) Front End & Overhead, (2-1/2 yards through 5 yards) | | | | | | | |
| | (c) Loaders, (with forks or pipe clamp) | | | | | | | |
| | (d) Loaders, (elevating belt type, Euclid & similar types) | | | | | | | |
| | Material Transfer Vehicle (Elevating Grader, Pickup Machine, and similar types) | | | | | | | |
| | Mechanic, Welder, Bodyman, Electrical, Camp & Maintenance Engineer | | | | | | | |
| | Micro Tunneling Machine | | | | | | | |
| | Mixers: Mobile type with hoist combination | | | | | | | |
| | Motor Patrol Grader | | | | | | | |
| | Mucking Machine: Mole, Tunnel Drill, Horizontal/Directional Drill Operator and/or Shield | | | | | | | |
| | Off-Road Hauler (including Articulating and Haul Trucks) | | | | | | | |
| | Operator on Dredges | | | | | | | |
| | Piledriver Engineer, L.B. Foster, Puller or similar paving breaker | | | | | | | |
| | Plant Operator (Asphalt & Concrete) | | | | | | | |
| | Power Plant, Turbine Operator 200 k.w & over (power plants or combination of power units over 300 k.w.) | | | | | | | |
| | Remote Controlled Equipment | | | | | | | |
| | Scraper (through 40 yards) | | | | | | | |

Wage benefits key: BHR=basic hourly rate; H&W=health and welfare; IAF=industry advancement fund; LEG=legal fund; L&M=labor/management fund; PEN=pension fund; SAF=safety; SUI=supplemental unemployment insurance; S&L=SUI & LEG combined; TRN=training; THR=total hourly rate; VAC=vacation

| Class Code | Classification of Laborers & Mechanics | BHR | H&W | PEN | TRN | Other Benefits | THR |
|----------------------------------|--|----------------|-------|-------|------|----------------|------------|
| Power Equipment Operators | | | | | | | |
| *See per diem note on last page | | | | | | | |
| | | L&M | | | | | |
| A1601 | Group I, including: | 47.74 | 11.40 | 14.75 | 1.00 | 0.10 | 0.05 75.04 |
| | Service Oiler/Service Engineer | | | | | | |
| | Shot Blast Machine | | | | | | |
| | Shovels, Backhoes, Excavators with all attachments, and Gradealls (3 yards & under) | | | | | | |
| | Sideboom (under 45 tons) | | | | | | |
| | Sub Grader (Gurries & similar types) | | | | | | |
| | Tack Tractor | | | | | | |
| | Truck Mounted Concrete Pump, Conveyor/Tele-belt, & Creter | | | | | | |
| | Wate Kote Machine | | | | | | |
| | | L&M | | | | | |
| A1602 | Group IA, including: | 49.64 | 11.40 | 14.75 | 1.00 | 0.10 | 0.05 76.94 |
| | Camera/Tool/Video Operator (Slipline) | | | | | | |
| | Certified Welder, Electrical Mechanic, Camp Maintenance Engineer, Mechanic (over 10,000 hours) | | | | | | |
| | Cranes (over 45 tons or 150 feet including jib & attachments) | | | | | | |
| | (a) Clamshells & Draglines (over 3 yards) | | | | | | |
| | (b) Tower Cranes | | | | | | |
| | Licensed Water/Waste Water Treatment Operator | | | | | | |
| | Loaders (over 5 yards) | | | | | | |
| | Motor Patrol Grader, Dozer, Grade Tractor (finish: when finishing to final grade and/or to hubs, or for asphalt) | | | | | | |
| | Power Plants (1000 k.w. & over) | | | | | | |
| | Profiler, Reclaimer, and Roto-Mill | | | | | | |
| | Quad | | | | | | |
| | Scrapers (over 40 yards) | | | | | | |
| | Screed | | | | | | |
| | Shovels, Backhoes, Excavators with all attachments (over 3 yards) | | | | | | |
| | Sidebooms (over 45 tons) | | | | | | |
| | Slip Form Paver, C.M.I. & similar types | | | | | | |
| | Topside (Asphalt Paver, Slurry machine, Spreaders, and similar types) | | | | | | |
| | | L&M | | | | | |
| A1603 | Group II, including: | 46.91 | 11.40 | 14.75 | 1.00 | 0.10 | 0.05 74.21 |
| | Boiler - Fireman | | | | | | |
| | Cement Hogs & Concrete Pump Operator | | | | | | |
| | Conveyors (except those listed in Group I) | | | | | | |
| | Hoists on Steel Erection, Towermobiles & Air Tuggers | | | | | | |
| | Horizontal/Directional Drill Locator | | | | | | |
| | Locomotives, Rod & Geared Engines | | | | | | |
| | Mixers | | | | | | |
| | Screening, Washing Plant | | | | | | |

Wage benefits key: BHR=basic hourly rate; H&W=health and welfare; IAF=industry advancement fund; LEG=legal fund; L&M=labor/management fund; PEN=pension fund; SAF=safety; SUI=supplemental unemployment insurance; S&L=SUI & LEG combined; TRN=training; THR=total hourly rate; VAC=vacation

| Class Code | Classification of Laborers & Mechanics | BHR | H&W | PEN | TRN | Other | Benefits | THR |
|----------------------------------|--|----------------|-------|-------|------|-------|----------|-------|
| Power Equipment Operators | | | | | | | | |
| *See per diem note on last page | | | | | | | | |
| | | L&M | | | | | | |
| A1603 | Group II, including: | 46.91 | 11.40 | 14.75 | 1.00 | 0.10 | 0.05 | 74.21 |
| | Sideboom (cradling rock drill, regardless of size) | | | | | | | |
| | Skidder | | | | | | | |
| | Trenching Machines (under 16 inches) | | | | | | | |
| | Water/Waste Water Treatment Operator | | | | | | | |
| | | L&M | | | | | | |
| A1604 | Group III, including: | 46.13 | 11.40 | 14.75 | 1.00 | 0.10 | 0.05 | 73.43 |
| | "A" Frame Trucks, Deck Winches | | | | | | | |
| | Bombardier (tack or tow rig) | | | | | | | |
| | Boring Machine | | | | | | | |
| | Brooms, Power (sweeper, elevator, vacuum, or similar) | | | | | | | |
| | Bump Cutter | | | | | | | |
| | Compressor | | | | | | | |
| | Farm Tractor | | | | | | | |
| | Forklift, Industrial Type | | | | | | | |
| | Gin Truck or Winch Truck (with poles when used for hoisting) | | | | | | | |
| | Hoists, Air Tuggers, Elevators | | | | | | | |
| | Loaders: | | | | | | | |
| | (a) Elevating-Athey, Barber Greene & similar types | | | | | | | |
| | (b) Forklifts or Lumber Carrier (on construction job sites) | | | | | | | |
| | (c) Forklifts, (with tower) | | | | | | | |
| | (d) Overhead & Front End, (under 2-1/2 yards) | | | | | | | |
| | Locomotives: Dinkey (air, steam, gas & electric) Speeders | | | | | | | |
| | Mechanics, Light Duty | | | | | | | |
| | Oil, Blower Distribution | | | | | | | |
| | Posthole Digger, Mechanical | | | | | | | |
| | Pot Fireman (power agitated) | | | | | | | |
| | Power Plant, Turbine Operator, (under 200 k.w.) | | | | | | | |
| | Pumps, Water | | | | | | | |
| | Roller (other than Asphalt) | | | | | | | |
| | Saws, Concrete | | | | | | | |
| | Skid Hustler | | | | | | | |
| | Skid Steer (with all attachments) | | | | | | | |
| | Stake Hopper | | | | | | | |
| | Straightening Machine | | | | | | | |
| | Tow Tractor | | | | | | | |
| | | L&M | | | | | | |
| A1605 | Group IV, including: | 39.42 | 11.40 | 14.75 | 1.00 | 0.10 | 0.05 | 66.72 |
| | Crane Assistant Engineer/Rig Oiler | | | | | | | |
| | Drill Helper | | | | | | | |
| | Parts & Equipment Coordinator | | | | | | | |

Wage benefits key: BHR=basic hourly rate; H&W=health and welfare; IAF=industry advancement fund; LEG=legal fund; L&M=labor/management fund; PEN=pension fund; SAF=safety; SUI=supplemental unemployment insurance; S&L=SUI & LEG combined; TRN=training; THR=total hourly rate; VAC=vacation

| Class Code | Classification of Laborers & Mechanics | BHR | H&W | PEN | TRN | Other Benefits | THR | |
|--|--|-------|-------|-------|------|----------------|------|-------|
| Power Equipment Operators | | | | | | | | |
| *See per diem note on last page | | | | | | | | |
| | | L&M | | | | | | |
| A1605 | Group IV, including: | 39.42 | 11.40 | 14.75 | 1.00 | 0.10 | 0.05 | 66.72 |
| | Spotter | | | | | | | |
| | Steam Cleaner | | | | | | | |
| | Swamper (on trenching machines or shovel type equipment) | | | | | | | |
| Roofers | | | | | | | | |
| *See per diem note on last page | | | | | | | | |
| | | L&M | | | | | | |
| A1701 | Roofer & Waterproofer | 47.62 | 13.75 | 3.91 | 0.81 | 0.10 | 0.06 | 66.25 |
| | | L&M | | | | | | |
| A1702 | Roofer Material Handler | 34.23 | 13.75 | 3.91 | 0.81 | 0.10 | 0.06 | 52.86 |
| Sheet Metal Workers, Region I (North of N63 latitude) | | | | | | | | |
| *See per diem note on last page | | | | | | | | |
| | | L&M | | | | | | |
| N1801 | Sheet Metal Journeyman | 50.83 | 12.25 | 14.86 | 1.80 | 0.12 | | 79.86 |
| | Air Balancing and duct cleaning of HVAC systems | | | | | | | |
| | Brazing, soldering or welding of metals | | | | | | | |
| | Demolition of sheet metal HVAC systems | | | | | | | |
| | Fabrication and installation of exterior wall sheathing, siding, metal roofing, flashing, decking and architectural sheet metal work | | | | | | | |
| | Fabrication and installation of heating, ventilation and air conditioning ducts and equipment | | | | | | | |
| | Fabrication and installation of louvers and hoods | | | | | | | |
| | Fabrication and installation of sheet metal lagging | | | | | | | |
| | Fabrication and installation of stainless steel commercial or industrial food service equipment | | | | | | | |
| | HVAC-R Service Mechanic, servicing and maintaining HVAC-R Systems | | | | | | | |
| | Manufacture, fabrication assembly, installation and alteration of all ferrous and nonferrous metal work | | | | | | | |
| | Metal lavatory partitions | | | | | | | |
| | Preparation of drawings taken from architectural and engineering plans required for fabrication and erection of sheet metal work | | | | | | | |
| | Sheet Metal shelving | | | | | | | |
| | Sheet Metal venting, chimneys and breaching | | | | | | | |
| | Skylight installation | | | | | | | |
| Sheet Metal Workers, Region II (South of N63 latitude) | | | | | | | | |
| *See per diem note on last page | | | | | | | | |

Wage benefits key: BHR=basic hourly rate; H&W=health and welfare; IAF=industry advancement fund; LEG=legal fund; L&M=labor/management fund; PEN=pension fund; SAF=safety; SUI=supplemental unemployment insurance; S&L=SUI & LEG combined; TRN=training; THR=total hourly rate; VAC=vacation

| Class Code | Classification of Laborers & Mechanics | BHR | H&W | PEN | TRN | Other Benefits | THR |
|--|--|-------|-------|-------|------|----------------|-------|
| Sheet Metal Workers, Region II (South of N63 latitude) | | | | | | | |
| *See per diem note on last page | | | | | | | |
| S1801 | Sheet Metal Journeyman | 45.35 | 12.23 | 14.70 | 1.83 | L&M 0.43 | 74.54 |
| | Air Balancing and duct cleaning of HVAC systems | | | | | | |
| | Brazing, soldering or welding of metals | | | | | | |
| | Demolition of sheet metal HVAC systems | | | | | | |
| | Fabrication and installation of exterior wall sheathing, siding, metal roofing, flashing, decking and architectural sheet metal work | | | | | | |
| | Fabrication and installation of heating, ventilation and air conditioning ducts and equipment | | | | | | |
| | Fabrication and installation of louvers and hoods | | | | | | |
| | Fabrication and installation of sheet metal lagging | | | | | | |
| | Fabrication and installation of stainless steel commercial or industrial food service equipment | | | | | | |
| | HVAC-R Service Mechanic, servicing and maintaining HVAC-R Systems | | | | | | |
| | Manufacture, fabrication assembly, installation and alteration of all ferrous and nonferrous metal work | | | | | | |
| | Metal lavatory partitions | | | | | | |
| | Preparation of drawings taken from architectural and engineering plans required for fabrication and erection of sheet metal work | | | | | | |
| | Sheet Metal shelving | | | | | | |
| | Sheet Metal venting, chimneys and breaching | | | | | | |
| | Skylight installation | | | | | | |
| Sprinkler Fitters | | | | | | | |
| *See per diem note on last page | | | | | | | |
| A1901 | Sprinkler Fitter | 54.01 | 10.55 | 18.25 | 0.52 | L&M 0.25 | 83.58 |
| Surveyors | | | | | | | |
| *See per diem note on last page | | | | | | | |
| A2001 | Chief of Parties | 54.50 | 12.48 | 13.64 | 1.20 | L&M 0.10 | 81.92 |
| A2002 | Party Chief | 50.69 | 12.48 | 13.64 | 1.20 | L&M 0.10 | 78.11 |
| A2003 | Line & Grade Technician/Office Technician/GPS, Drones | 47.94 | 12.48 | 13.64 | 1.20 | L&M 0.10 | 75.36 |
| A2004 | Associate Party Chief (including Instrument Person & Head Chain Person)/Stake Hop/Grademan | 45.69 | 12.48 | 13.64 | 1.20 | L&M 0.10 | 73.11 |

Wage benefits key: BHR=basic hourly rate; H&W=health and welfare; IAF=industry advancement fund; LEG=legal fund; L&M=labor/management fund; PEN=pension fund; SAF=safety; SUI=supplemental unemployment insurance; S&L=SUI & LEG combined; TRN=training; THR=total hourly rate; VAC=vacation

| Class Code | Classification of Laborers & Mechanics | BHR | H&W | PEN | TRN | Other Benefits | THR |
|---|--|-------|-------|-------|------|----------------|-------|
| Surveyors | | | | | | | |
| *See per diem note on last page | | | | | | | |
| | | | | | | | |
| A2006 | Chain Person (for crews with more than 2 people) | 41.09 | 12.48 | 13.64 | 1.20 | L&M 0.10 | 68.51 |
| Truck Drivers | | | | | | | |
| *See per diem note on last page | | | | | | | |
| | | | | | | | |
| A2101 | Group I, including: | 46.84 | 12.48 | 13.64 | 1.20 | L&M 0.10 | 74.26 |
| Air/Sea Traffic Controllers | | | | | | | |
| Ambulance/Fire Truck Driver (EMT certified) | | | | | | | |
| Boat Coxswain | | | | | | | |
| Captains & Pilots (air & water) | | | | | | | |
| Deltas, Commanders, Rollagons, & similar equipment (when pulling sleds, trailers or similar equipment) | | | | | | | |
| Dump Trucks (including articulating end dumps, rockbuggy, side dump, belly dump, & trucks with pups) over 40 yards up to & including 60 yards | | | | | | | |
| Fueller | | | | | | | |
| Helicopter Transporter | | | | | | | |
| Liquid Vac Truck/Super Vac Truck | | | | | | | |
| Material Coordinator or Purchasing Agent | | | | | | | |
| Oil Distributor Truck | | | | | | | |
| Ready-mix (over 12 yards up to & including 15 yards) (over 15 yards to be negotiated) | | | | | | | |
| Semi with Double Box Mixer | | | | | | | |
| Tireman, Medium Duty (Truck Tires up to 1200-24") | | | | | | | |
| Water Wagon (250 Bbls and above) | | | | | | | |
| | | | | | | | |
| A2102 | Group 1A including: | 48.19 | 12.48 | 13.64 | 1.20 | L&M 0.10 | 75.61 |
| Dump Trucks (including rockbuggy, side dump, belly dump & trucks with pups) over 60 yards up to & including 100 yards (over 100 yards to be negotiated) | | | | | | | |
| Jeeps (driver under load) | | | | | | | |
| Lowboys, including tractor attached trailers & jeeps, up to & including 12 axles (over 12 axles or 150 tons to be negotiated) | | | | | | | |
| Tireman Heavy Duty (earthmover tires, i.e., loader, scraper, haul truck) | | | | | | | |
| | | | | | | | |
| A2103 | Group II, including: | 45.51 | 12.48 | 13.64 | 1.20 | L&M 0.10 | 72.93 |
| All Deltas, Commanders, Rollagons, & similar equipment | | | | | | | |
| Batch Trucks (8 yards & up) | | | | | | | |
| Batch Trucks (up to & including 7 yards) | | | | | | | |
| Boom Truck/Knuckle Truck (over 5 tons) | | | | | | | |
| Cacasco Truck/Heat Stress Truck | | | | | | | |
| Construction and Material Safety Technician | | | | | | | |

Wage benefits key: BHR=basic hourly rate; H&W=health and welfare; IAF=industry advancement fund; LEG=legal fund; L&M=labor/management fund; PEN=pension fund; SAF=safety; SUI=supplemental unemployment insurance; S&L=SUI & LEG combined; TRN=training; THR=total hourly rate; VAC=vacation

| Class Code | Classification of Laborers & Mechanics | BHR | H&W | PEN | TRN | Other Benefits | THR |
|---------------------------------|--|-------|-------|-------|------|----------------|-------|
| Truck Drivers | | | | | | | |
| *See per diem note on last page | | | | | | | |
| A2103 | Group II, including: | 45.51 | 12.48 | 13.64 | 1.20 | L&M 0.10 | 72.93 |
| | Dump Trucks (including articulating end dump, rockbuggy, side dump, belly dump, & trucks with pups) over 20 yards up to & including 40 yards | | | | | | |
| | Gin Pole Truck, Winch Truck, Wrecker (truck mounted "A" frame manufactured rating over 5 tons) | | | | | | |
| | Mechanics | | | | | | |
| | Partsman | | | | | | |
| | Ready-mix (up to & including 12 yards) | | | | | | |
| | Stringing Truck | | | | | | |
| | Turn-O-Wagon or DW-10 (not self loading) | | | | | | |
| A2104 | Group III, including: | 44.64 | 12.48 | 13.64 | 1.20 | L&M 0.10 | 72.06 |
| | Boom Truck/Knuckle Truck (up to & including 5 tons) | | | | | | |
| | Dump Trucks (including articulating end dump, rockbuggy, side dump, belly dump, & trucks with pups) over 10 yards up to & including 20 yards | | | | | | |
| | Expeditor (electrical & pipefitting materials) | | | | | | |
| | Gin Pole Truck, Winch Truck, Wrecker (truck mounted "A" frame manufactured rating 5 tons & under) | | | | | | |
| | Greaser - Shop | | | | | | |
| | Semi or Truck & Trailer | | | | | | |
| | Thermal Plastic Layout Technician | | | | | | |
| | Traffic Control Technician | | | | | | |
| | Trucks/Jeeps (push or pull) | | | | | | |
| A2105 | Group IV, including: | 44.02 | 12.48 | 13.64 | 1.20 | L&M 0.10 | 71.44 |
| | Air Cushion or similar type vehicle | | | | | | |
| | All Terrain Vehicle | | | | | | |
| | Buggymobile | | | | | | |
| | Bull Lift & Fork Lift, Fork Lift with Power Boom & Swing Attachment (over 5 tons) | | | | | | |
| | Bus Operator (over 30 passengers) | | | | | | |
| | Cement Spreader, Dry | | | | | | |
| | Combination Truck-Fuel & Grease | | | | | | |
| | Compactor (when pulled by rubber tired equipment) | | | | | | |
| | Dump Trucks (including rockbuggy, side dump, belly dump, & trucks with pups) up to & including 10 yards | | | | | | |
| | Dumpster | | | | | | |
| | Expeditor (general) | | | | | | |
| | Fire Truck/Ambulance Driver | | | | | | |
| | Flat Beds, Dual Rear Axle | | | | | | |
| | Foam Distributor Truck Dual Axle | | | | | | |
| | Front End Loader with Fork | | | | | | |

Wage benefits key: BHR=basic hourly rate; H&W=health and welfare; IAF=industry advancement fund; LEG=legal fund; L&M=labor/management fund; PEN=pension fund; SAF=safety; SUI=supplemental unemployment insurance; S&L=SUI & LEG combined; TRN=training; THR=total hourly rate; VAC=vacation

| Class Code | Classification of Laborers & Mechanics | BHR | H&W | PEN | TRN | Other Benefits | THR |
|--|---|-------|-------|-------|------|---|-------|
| Truck Drivers | | | | | | | |
| *See per diem note on last page | | | | | | | |
| A2105 | Group IV, including: | 44.02 | 12.48 | 13.64 | 1.20 | L&M 0.10 | 71.44 |
| | Grease Truck | | | | | | |
| | Hydro Seeder, Dual Axle | | | | | | |
| | Hyster Operators (handling bulk aggregate) | | | | | | |
| | Loadmaster (air & water operations) | | | | | | |
| | Lumber Carrier | | | | | | |
| | Ready-mix, (up to & including 7 yards) | | | | | | |
| | Rigger (air/water/oilfield) | | | | | | |
| | Tireman, Light Duty | | | | | | |
| | Track Truck Equipment | | | | | | |
| | Truck Vacuum Sweeper | | | | | | |
| | Warehouseperson | | | | | | |
| | Water Truck (Below 250 Bbls) | | | | | | |
| | Water Truck (straight) | | | | | | |
| | Water Wagon, Semi | | | | | | |
| A2106 | Group V, including: | 43.22 | 12.48 | 13.64 | 1.20 | L&M 0.10 | 70.64 |
| | Buffer Truck | | | | | | |
| | Bull Lifts & Fork Lifts, Fork Lifts with Power Boom & Swing | | | | | | |
| | Attachments (up to & including 5 tons) | | | | | | |
| | Bus Operator (up to 30 passengers) | | | | | | |
| | Farm Type Rubber Tired Tractor (when material handling or pulling wagons on a construction project) | | | | | | |
| | Flat Beds, Single Rear Axle | | | | | | |
| | Foam Distributor Truck Single Axle | | | | | | |
| | Fuel Handler (station/bulk attendant) | | | | | | |
| | Gear/Supply Truck | | | | | | |
| | Gravel Spreader Box Operator on Truck | | | | | | |
| | Hydro Seeder, Single Axle | | | | | | |
| | Pickups (pilot cars & all light-duty vehicles) | | | | | | |
| | Rigger | | | | | | |
| | Swamper | | | | | | |
| | Tack Truck (welders/gear) | | | | | | |
| | Team Drivers (horses, mules, & similar equipment) | | | | | | |
| Tunnel Workers, Laborers (The Alaska areas north of N63 latitude and east of W138 longitude) | | | | | | | |
| *See per diem note on last page | | | | | | | |
| N2201 | Group I, including: | 39.60 | 9.55 | 21.16 | 1.65 | L&M 0.30 LEG 0.20 | 72.46 |
| | Brakeman | | | | | | |
| | Mucker | | | | | | |
| Wage benefits key: BHR=basic hourly rate; H&W=health and welfare; IAF=industry advancement fund; LEG=legal fund; L&M=labor/management fund; PEN=pension fund; SAF=safety; SUI=supplemental unemployment insurance; S&L=SUI & LEG combined; TRN=training; THR=total hourly rate; VAC=vacation | | | | | | | |

| Class Code | Classification of Laborers & Mechanics | BHR | H&W | PEN | TRN | Other | Benefits | THR |
|---|--|-------|------|-------|------|-------|----------|-------|
| Tunnel Workers, Laborers (The Alaska areas north of N63 latitude and east of W138 longitude) | | | | | | | | |
| *See per diem note on last page | | | | | | | | |
| N2201 | Group I, including: | 39.60 | 9.55 | 21.16 | 1.65 | L&M | LEG | |
| | Nipper | | | | | 0.30 | 0.20 | 72.46 |
| | Storm Water Pollution Protection Plan Worker (SWPPP Worker - erosion and sediment control Laborer) | | | | | | | |
| | Topman & Bull Gang | | | | | | | |
| | Tunnel Track Laborer | | | | | | | |
| N2202 | Group II, including: | 40.70 | 9.55 | 21.16 | 1.65 | L&M | LEG | |
| | Burning & Cutting Torch | | | | | 0.30 | 0.20 | 73.56 |
| | Certified Erosion Sediment Control Lead (CESCL Laborer) | | | | | | | |
| | Concrete Laborer | | | | | | | |
| | Floor Preparation, Core Drilling | | | | | | | |
| | Jackhammer/Chipping Gun or Pavement Breaker | | | | | | | |
| | Laser Instrument Operator | | | | | | | |
| | Nozzlemen, Pumpcrete or Shotcrete | | | | | | | |
| | Pipelayer Helper | | | | | | | |
| N2203 | Group III, including: | 41.69 | 9.55 | 21.16 | 1.65 | L&M | LEG | |
| | Miner | | | | | 0.30 | 0.20 | 74.55 |
| | Retimberman | | | | | | | |
| N2204 | Group IIIA, including: | 45.96 | 9.55 | 21.16 | 1.65 | L&M | LEG | |
| | Asphalt Raker, Asphalt Belly Dump Lay Down | | | | | 0.30 | 0.20 | 78.82 |
| | Drill Doctor (in the field) | | | | | | | |
| | Driller (including, but not limited to wagon drills, air-track drills, hydraulic drills) | | | | | | | |
| | Pioneer Drilling & Drilling Off Tugger (all type drills) | | | | | | | |
| | Pipelayer | | | | | | | |
| | Powderman (Employee Possessor) | | | | | | | |
| | Storm Water Pollution Protection Plan Specialist (SWPPP Specialist) | | | | | | | |
| | Traffic Control Supervisor, DOT Qualified | | | | | | | |
| N2206 | Group IIIB, including: | 52.10 | 5.50 | 21.16 | 1.65 | L&M | LEG | |
| | Driller (including, but not limited to wagon drills, air-track drills, hydraulic drills)(over 5,000 hours) | | | | | 0.30 | 0.20 | 80.91 |
| | Federal Powderman (Responsible Person in Charge) | | | | | | | |
| | Grade Checking (setting or transferring of grade marks, line and grade, GPS, drones) | | | | | | | |
| | Pioneer Drilling & Drilling Off Tugger (all type drills)(over 5,000 hours) | | | | | | | |
| | Stake Hopper | | | | | | | |

Wage benefits key: BHR=basic hourly rate; H&W=health and welfare; IAF=industry advancement fund; LEG=legal fund; L&M=labor/management fund; PEN=pension fund; SAF=safety; SUI=supplemental unemployment insurance; S&L=SUI & LEG combined; TRN=training; THR=total hourly rate; VAC=vacation

| Class Code | Classification of Laborers & Mechanics | BHR | H&W | PEN | TRN | Other | Benefits | THR |
|--|--|-------|------|-------|------|-------|----------|-------|
| Tunnel Workers, Laborers (The area that is south of N63 latitude and west of W138 longitude) | | | | | | | | |
| *See per diem note on last page | | | | | | | | |
| S2201 | Group I, including: | 39.60 | 9.55 | 21.16 | 1.65 | L&M | LEG | |
| | | | | | | 0.30 | 0.20 | 72.46 |
| | Brakeman | | | | | | | |
| | Mucker | | | | | | | |
| | Nipper | | | | | | | |
| | Storm Water Pollution Protection Plan Worker (SWPPP Worker - erosion and sediment control Laborer) | | | | | | | |
| | Topman & Bull Gang | | | | | | | |
| | Tunnel Track Laborer | | | | | | | |
| S2202 | Group II, including: | 40.70 | 9.55 | 21.16 | 1.65 | L&M | LEG | |
| | | | | | | 0.30 | 0.20 | 73.56 |
| | Burning & Cutting Torch | | | | | | | |
| | Certified Erosion Sediment Control Lead (CESCL Laborer) | | | | | | | |
| | Concrete Laborer | | | | | | | |
| | Floor Preparation, Core Drilling | | | | | | | |
| | Jackhammer/Chipping Gun or Pavement Breaker | | | | | | | |
| | Laser Instrument Operator | | | | | | | |
| | Nozzlemen, Pumpcrete or Shotcrete | | | | | | | |
| | Pipelayer Helper | | | | | | | |
| S2203 | Group III, including: | 41.69 | 9.55 | 21.16 | 1.65 | L&M | LEG | |
| | | | | | | 0.30 | 0.20 | 74.55 |
| | Miner | | | | | | | |
| | Retimberman | | | | | | | |
| S2204 | Group IIIA, including: | 45.96 | 9.55 | 21.16 | 1.65 | L&M | LEG | |
| | | | | | | 0.30 | 0.20 | 78.82 |
| | Asphalt Raker, Asphalt Belly Dump Lay Down | | | | | | | |
| | Drill Doctor (in the field) | | | | | | | |
| | Driller (including, but not limited to wagon drills, air-track drills, hydraulic drills) | | | | | | | |
| | Pioneer Drilling & Drilling Off Tugger (all type drills) | | | | | | | |
| | Pipelayer | | | | | | | |
| | Powderman (Employee Possessor) | | | | | | | |
| | Storm Water Pollution Protection Plan Specialist (SWPPP Specialist) | | | | | | | |
| | Traffic Control Supervisor, DOT Qualified | | | | | | | |
| S2206 | Group IIIB, including: | 52.10 | 5.50 | 21.16 | 1.65 | L&M | LEG | |
| | | | | | | 0.30 | 0.20 | 80.91 |
| | Driller (including, but not limited to wagon drills, air-track drills, hydraulic drills)(over 5,000 hours) | | | | | | | |
| | Federal Powderman (Responsible Person in Charge) | | | | | | | |
| | Grade Checking (setting or transferring of grade marks, line and grade, GPS, drones) | | | | | | | |
| | Pioneer Drilling & Drilling Off Tugger (all type drills)(over 5,000 hours) | | | | | | | |
| Wage benefits key: BHR=basic hourly rate; H&W=health and welfare; IAF=industry advancement fund; LEG=legal fund; L&M=labor/management fund; PEN=pension fund; SAF=safety; SUI=supplemental unemployment insurance; S&L=SUI & LEG combined; TRN=training; THR=total hourly rate; VAC=vacation | | | | | | | | |

| Class Code | Classification of Laborers & Mechanics | BHR | H&W | PEN | TRN | Other | Benefits | THR |
|---|--|-----|-----|-----|-----|-------|----------|-----|
| Tunnel Workers, Laborers (The area that is south of N63 latitude and west of W138 longitude) | | | | | | | | |
| *See per diem note on last page | | | | | | | | |

| | | | | | | | | | |
|--------------|------------------------|-------|------|-------|------|--|------------------------|--------------------|-------|
| S2206 | Group IIIB, including: | 52.10 | 5.50 | 21.16 | 1.65 | | L&M 0.30 | LEG 0.20 | 80.91 |
| | Stake Hopper | | | | | | | | |

| | | | | | | | | |
|--|--|--|--|--|--|--|--|--|
| Tunnel Workers, Power Equipment Operators | | | | | | | | |
| *See per diem note on last page | | | | | | | | |

| | | | | | | | | | |
|--------------|-----------|-------|-------|-------|------|--|------------------------|------|-------|
| A2207 | Group I | 52.51 | 11.40 | 14.75 | 1.00 | | L&M 0.10 | 0.05 | 79.81 |
| A2208 | Group IA | 54.60 | 11.40 | 14.75 | 1.00 | | L&M 0.10 | 0.05 | 81.90 |
| A2209 | Group II | 51.60 | 11.40 | 14.75 | 1.00 | | L&M 0.10 | 0.05 | 78.90 |
| A2210 | Group III | 50.74 | 11.40 | 14.75 | 1.00 | | L&M 0.10 | 0.05 | 78.04 |
| A2211 | Group IV | 43.36 | 11.40 | 14.75 | 1.00 | | L&M 0.10 | 0.05 | 70.66 |

* Per diem is an established practice for this classification. This means that per diem is an allowable alternative to board and lodging if all criteria are met. See 8 AAC 30.051-08 AAC 30.056, and the per diem information on page vii of this Pamphlet.

** Work in combination of classifications: Employees working in any combination of classifications within the diving crew (working diver, standby diver, and tender) in a shift are paid in the classification with the highest rate for a minimum of 8 hours per shift.

Wage benefits key: BHR=basic hourly rate; H&W=health and welfare; IAF=industry advancement fund; LEG=legal fund; L&M=labor/management fund; PEN=pension fund; SAF=safety; SUI=supplemental unemployment insurance; S&L=SUI & LEG combined; TRN=training; THR=total hourly rate; VAC=vacation

Shipyards Rates Addendum

This Addendum was developed to address the specialized industry of shipbuilding/repair in Alaska, as it relates to public works. For the purposes of providing rates for shipyard work the Department is adopting Shipyards rates from the state of Washington (King County). These rates only apply to work done in shipbuilding/repair in Alaska, under a public contract. This addendum will be updated two times a year to coincide with the corresponding Issue of *Laborers and Mechanics MINIMUM RATES OF PAY*.

| Class Code | BHR | H&W | PEN | TRN | Other Benefits | THR |
|---|----------------------|------------------------|-----|-----|----------------|-------|
| Shipyards Workers *See total hourly(THR) note below | | | | | | |
| A2300 | Ship Building/Repair | Boilermaker | | | | 50.35 |
| A2305 | Ship Building/Repair | Carpenter | | | | 50.95 |
| A2310 | Ship Building/Repair | Crane Operator | | | | 45.06 |
| A2315 | Ship Building/Repair | Electrician | | | | 50.42 |
| A2320 | Ship Building/Repair | Heat & Frost Insulator | | | | 84.58 |
| A2325 | Ship Building/Repair | Laborer | | | | 50.95 |
| A2330 | Ship Building/Repair | Mechanist | | | | 50.95 |
| A2335 | Ship Building/Repair | Operating Engineer | | | | 45.06 |
| A2340 | Ship Building/Repair | Painter | | | | 50.95 |
| A2345 | Ship Building/Repair | Pipefitter | | | | 50.95 |
| A2350 | Ship Building/Repair | Rigger | | | | 50.35 |
| A2355 | Ship Building/Repair | Sheet Metal | | | | 50.35 |
| A2360 | Ship Building/Repair | Shipwright | | | | 50.95 |
| A2365 | Ship Building/Repair | Warehouse | | | | 45.06 |

*The THR includes the base hourly rate (BHR) and fringe benefits. Employers must pay a BHR and fringe benefit package that adds up to the THR. Fringe benefits included in the THR can be paid to employees in three ways; paid into a union trust fund, into an approved benefit plan, or paid directly on the paycheck as gross wages.

Wage benefits key: BHR=base hourly rate; H&W=health and welfare; IAF=industry advancement fund; LEG=legal fund; L&M=labor/management fund; PEN=pension fund; SAF=safety; SUI=supplemental unemployment insurance; S&L=SUI & LEG combined; TRN=training; THR=total hourly rate; VAC=vacation

TABLE OF CONTENTS
FOR EXHIBIT "B"
GENERAL PROVISIONS

| Clause | | |
|--------|---|----|
| 1. | APPLICABLE LAW AND DISPUTES | 36 |
| 2. | ASSIGNMENT AND SUBCONTRACTING | 37 |
| 3. | AUDIT OF RECORDS | 37 |
| 4. | BUYER FURNISHED PROPERTY | 37 |
| 5. | BUYER'S INSPECTORS | 38 |
| 6. | BUYER'S RIGHT TO USE INFORMATION DISCLOSED BY SELLER | 38 |
| 7. | CALENDAR DATES | 38 |
| 8. | CHANGES | 38 |
| 9. | CLAUSE HEADINGS | 38 |
| 10. | COMPLIANCE WITH FEDERAL, STATE AND LOCAL LAWS | 38 |
| 11. | CONFIDENTIAL RELATIONSHIP | 38 |
| 12. | CONTINUITY OF SERVICES | 38 |
| 13. | CONTRACT ADMINISTRATION | 39 |
| 14. | DEFAULT | 39 |
| 15. | DEFINITIONS | 40 |
| 16. | EXCUSABLE DELAYS | 40 |
| 17. | INDEMNITY | 41 |
| 18. | INSPECTION OF SERVICES | 41 |
| 19. | INSURANCE | 41 |
| 20. | LAWS, ORDINANCES, RULES & REGULATIONS | 42 |
| 21. | MODIFICATION OF ORDER | 42 |
| 22. | NO WAIVER OF CONDITIONS | 43 |
| 23. | NON-DISCRIMINATION | 43 |
| 24. | NOTICE TO THE BUYER OF LABOR DISPUTES | 43 |
| 25. | OPERATION AND STORAGE AREAS | 43 |
| 26. | OTHER CONTRACTS | 43 |
| 27. | PERMITS AND RESPONSIBILITIES | 43 |
| 28. | PROTECTION OF BUILDINGS, EQUIPMENT AND VEGETATION | 44 |
| 29. | PUBLIC RELEASE OF INFORMATION | 44 |
| 30. | REMOVAL OF SELLER'S UNSATISFACTORY EMPLOYEES | 44 |
| 31. | SAFETY | 44 |
| 32. | SUPERINTENDENCE BY SELLER | 44 |
| 33. | TAXES | 44 |
| 34. | TITLE AND RISK OF LOSS | 44 |
| 35. | WARRANTY OF SERVICES | 44 |
| 36. | TERMINATION FOR CONVENIENCE | 45 |
| 37. | TERMINATION FOR DEFAULT | 45 |
| 38. | TERMINATION CONTINGENCY | 45 |
| 39. | STRICT LOYALTY | 45 |
| 40. | DEBARMENT | 45 |

FNSB School District is hereinafter referred to as "Buyer".

The following conditions apply to any Purchase Order issued by the Buyer as a result of this solicitation.

1. **APPLICABLE LAW AND DISPUTES**

Any dispute with respect to this Order shall be governed by the laws of Alaska and FNSB School Board Policies. Any appeal of an administrative order and any original action to enforce any provision of this agreement or to obtain any relief from remedy in connection with this agreement may be brought only in the Superior Court for the Fourth Judicial District of Alaska.

2. **ASSIGNMENT AND SUBCONTRACTING**

This Order or any interest hereunder shall not be assigned or transferred by the Seller without the prior written consent of the Buyer. The Buyer shall not consent to any proposed assignment unless and until the Seller furnishes the Buyer with two (2) executed copies of the assignment. The Seller shall not subcontract any of the work required by this Contract, without the prior written approval of the Buyer.

3. **AUDIT OF RECORDS**

Seller shall keep adequate records of direct labor costs and all other costs of the performance of this Contract, which shall be subject to audit by a certified public accounting firm designated by the Buyer in the event of termination for convenience or with respect to any work for which the price or any part thereof is based on time and cost of materials.

4. **BUYER FURNISHED PROPERTY**

a. **Furnished Property**

The Buyer shall deliver to the Seller for incorporation into the work to be performed, the property described in the SOW as Buyer furnished property, hereinafter referred to as "property." All property shall be identified as property of the Buyer. The property shall be used exclusively on the work required by this Contract. The Seller shall establish procedures for the inventorying, storage, maintenance, and inspection of the property. Records of such shall be made available to the Buyer upon request.

b. **Delivery**

The performance schedule of this Contract is based upon the premise that property suitable for use will be delivered to the Seller at the times stated in the SOW or, if not so stated, in sufficient time to enable the Seller to meet the performance schedule. If the property is not delivered to the Seller by such time or times, the Buyer shall, upon timely written request made by the Seller, make a determination of the extent of the delay, if any, incurred by the Seller thereby, and shall equitably adjust the performance schedule or the Contract price, or both, and any other contractual provision affected by such delay, in accordance with the "Changes" clause. If the property is received by the Seller in a condition which makes it not suitable for its intended use, the Seller shall, upon receipt thereof, notify the Buyer of such fact. Upon such notice, the Buyer shall advise the Seller of the disposition to be made of the property and issue a change order, with respect to such property, under the "Changes" clause.

c. **Risk of Loss**

The Seller assumes the risk of, and shall be responsible for, any loss or damage to property furnished under this clause upon its delivery to the Seller. Seller shall maintain adequate insurance to cover this risk.

d. **Access**

The Buyer, and any persons designated by the Buyer, shall at all reasonable times have access to the premises where the property is located for the purpose of inspecting the property.

e. **Changes in Property**

1. By notice in writing, the Buyer may:

- a. Increase, decrease, or withdraw the property provide or to be provided by the Buyer under this clause, or
- b. Substitute other property for property to be provided by the Buyer. The Seller shall promptly take such action as the Buyer may direct with respect to the removal and shipping of property delivered and later withdrawn by such notice.

2. Upon any increase, decrease, withdrawal or substitution of property, the Buyer, upon the written request of the Seller or on the Buyer's own accord, shall equitably adjust such

contractual provisions as may be affected by the increase, decrease, withdrawal or substitution in accordance with the "Changes" clause.

f. Title

Title to all property shall remain in the Buyer.

5. **BUYER'S INSPECTORS**

The work shall be subject to inspection by the Buyer's appointed inspectors to insure strict compliance with the terms of the Contract. The inspectors are not authorized to change any provision of the specifications or any other part of this Contract without written authorization of the Buyer, nor shall the presence or absence of an inspector relieve the Seller from any requirements of the Contract.

6. **BUYER'S RIGHT TO USE INFORMATION DISCLOSED BY SELLER**

Unless otherwise expressly set forth to the contrary in this Contract, the Buyer shall have the right to use and have used, for any purpose, unpatented information concerning the services performed by the Seller hereunder which Seller may disclose to the Buyer during performance of this Contract if such information is furnished without restrictions on its use.

7. **CALENDAR DATES**

All periods of days referred to in this Contract shall be measured in calendar days.

8. **CHANGES**

The Buyer may, at any time, and from time to time by written order from the Buyer's Purchasing Department to the Seller, make changes in any one or more of the following: (a) method of shipment or packing; and (b) time and/or place of delivery; and (c) the quantity of items ordered. If such change causes an increase or decrease in the price of the Order or the time required to perform, an equitable adjustment shall be made and the Order modified in writing accordingly. Any claim by the Seller hereunder must be asserted in writing within fifteen (15) days from the date the change is ordered. Whether made pursuant to this clause or by mutual agreement, changes shall not be binding upon the Buyer, except when confirmed in writing by a member of the Buyer's Purchasing Department.

9. **CLAUSE HEADINGS**

The headings and subheadings of clauses contained herein are used for convenience and ease of reference and shall not limit the scope or intent of the clause.

10. **COMPLIANCE WITH FEDERAL, STATE AND LOCAL LAWS**

FNSBSD will comply with the Uniform Administrative Requirements, Cost Principles and Audit Requirements for Federal Awards, [2 CFR 200.318/2 CFR 200.319/7 CFR 3016.36].

The Seller shall comply with all applicable Federal, State and Local laws and ordinances and all lawful orders, rules and regulations thereunder, including the applicable provisions of the Fair Labor Standards Act of 1938 as amended (29 U.S.C. Sec. 201219) and the Occupational Safety and Health Act of 1970 and all regulations and standards and any amendments issued pursuant thereto. The Seller warrants that the items delivered shall comply with the foregoing.

11. **CONFIDENTIAL RELATIONSHIP**

The Seller shall treat as confidential all information supplied by Buyer or obtained by the Seller as a result of performance under this Contract unless such is in the public domain. The Seller shall not disclose any information related to this Contract to any person not authorized by Buyer in writing to receive it.

12. **CONTINUITY OF SERVICES**

- a. The Seller recognizes that: (1) the services provided under this Contract are vital to the Buyer's operations, (2) continuity thereof must be maintained at a consistently high level without interruption, (3) upon expiration of this Contract or termination of this Contract for convenience or default, a successor either the Buyer or another seller may continue the services performed

hereunder, (4) the successor will require phase-in training and assistance, (5) the seller's cooperation is required in order to effect an orderly and efficient transition to a successor.

- b. Therefore, the Seller shall, upon written notification by the Buyer, provide phase-in and phase-out (PIPO) services for up to sixty (60) days after expiration or termination of this Contract. Such notice shall be given sixty (60) days prior to Contract expiration or concurrently with the notice of termination. After notification, the Seller shall negotiate in good faith with a successor in determining the nature and extent of the PIPO services, including the cost thereof and a mutually acceptable detailed plan for PIPO operations. The plan shall have a training program and specify a date for shifting the responsibilities to the successor for each division of work set forth in the plan. The plan shall be subject to the approval of the Buyer.
- c. The Seller shall provide sufficient experienced personnel during the PIPO period to insure that the services performed under this Contract are maintained at a high level of proficiency.
- d. The Seller shall be reimbursed for all reasonable PIPO costs, which are those costs accruing within the agreed period after Contract expiration or termination which result from the PIPO operations. A profit shall be paid on said costs unless the Contract has been terminated for default.
- e. The Seller shall cooperate with the successor in allowing as many of the Seller's personnel as practicable to remain on the job and to transfer to the successor in order to enhance the continuity and consistency of the services required under this Contract. Therefore, the Seller shall furnish to the successor the necessary personnel records and allow the successor to conduct on-site interviews with the Seller's employees. If said employees are agreeable to the transfer and are accepted by the successor, then the Seller shall release them for employment by the successor at a mutually acceptable date and shall negotiate the transfer of their earned fringe benefits, if any, to the successor.

13. **CONTRACT ADMINISTRATION**

Notwithstanding any other provisions of this Contract or any document referenced therein, the Buyer's Director of Procurement, or cognizant Contract Administrator are the only individuals authorized to make the changes in or redirect the work required by this Contract. Where the Buyer's approval is required under the terms of this Contract, it shall be construed to mean the approval of the Buyer's Director of Procurement or the cognizant Contract Administrator. In the event the Seller effects any change at the direction of any other person, the change will be considered as having been made without authority and an adjustment shall not be made in Contract price or performance schedule as a result thereof.

14. **DEFAULT**

- a. The Buyer may terminate this Order in whole or in part by written, emailed, or FAX notice:
 - i. if the Seller shall become insolvent or make a general assignment for the benefit of creditors, or
 - ii. if the Seller shall become insolvent or make a general assignment for the benefit of creditors, or
 - iii. if a petition under any bankruptcy act or similar statute is filed by or against the Seller and is not vacated within ten (10) days after it is filed, or
 - iv. if the Seller fails to make delivery of the items or to perform the services within the time specified in this Order, or any increments thereof or extensions thereto, or
 - v. if the Seller fails to perform any other obligations under this Order, or so fails to make progress, so as to endanger performance of this Order, or
 - vi. if the Seller's financial condition shall become such as to endanger completion of performance.
- b. If the Buyer terminates this Order in whole or in part as provided in paragraph (9.1) of this clause, the Buyer may procure, upon such terms and in such manner as the Buyer may deem appropriate,

items similar to those terminated, and the Seller shall be liable to the Buyer for any excess costs of such similar items; however, the Seller shall continue the performance of this Order to the extent not terminated,

- c. The rights and remedies of the Buyer provided in this clause shall not be exclusive, and are in addition to any others rights and remedies provided by law or under this Order.

15. **DEFINITIONS**

As used in this Contract, the following terms shall have the meanings set forth below:

| TERM | MEANING |
|-------------------------|---|
| 1. "Advise" | Advise in writing. |
| 2. "Appoint" | Appoint in writing |
| 3. "Approval" | Approval in writing |
| 4. "Buyer" | Person or persons designated in writing who are authorized to act on behalf of the Buyer. This designation shall be made by the Buyer on or before the date work commences under this Contract. |
| 5. "Change Order" | A written order signed by the Buyer directing the Seller to make changes in the work without the consent of the Seller. |
| 6. "Contract Amendment" | A written alteration in any part of the Contract whether accomplished by unilateral action in accordance with a contract provision, or by mutual action of the parties. It includes change orders and notices of termination. |
| 7. "Designate" | Designate in writing. |
| 8. "Direction" | Direction in writing. |
| 9. "Includes" | Includes but is not limited to. |
| 10. "Item" | Hardware, data, software, materials, spare parts and other articles to be delivered or services to be performed. |
| 11. "May" | May is permissive, however, the words "no person may" mean that no person is required, authorized, or permitted to do the act prohibited. |
| 12. "Shall" | Shall is imperative. |
| 13. "Statement of Work" | All specifications, maps, data, and other information included or referenced in the Statement of Work. "SOW" |
| 14. "Subcontractor(s)" | All persons, vendors, and entities furnishing work, property, or services to the Seller for use on this Contract. |
| 15. "Work" | Includes equipment, installation, material, and services. |

16. **EXCUSABLE DELAYS**

The Seller shall not be liable for damages, including liquidated damages, if any, for delays in performance or failure to perform due to causes beyond the control and without the fault or negligence of the Seller. Such causes include but are not limited to, acts of God, acts of the public enemy, acts of the United States Government, fires, floods, epidemics, quarantine restrictions, strikes, freight embargoes, or unusually severe weather. When any delays in delivery will occur or are anticipated, the Seller shall immediately give notice thereof to the Buyer.

17. **INDEMNITY**

Except for claims arising out of acts caused by the sole negligence of the Buyer, its agents, servants or employees, the Seller agrees to indemnify and hold harmless the School District, its agents, servants and employees, from acts or omissions of any nature whatsoever of the Seller, its agents, servants and employees, causing injury to, or death of person(s) or damage to property during the term of this contract, and from any expense incident to the defense of the School District therefrom. The Seller agrees to hold the FNSB School District harmless from and to defend it against, any and all claims arising from the purchase, installation, and/or use of the equipment, articles and/or materials which are the subject of this Order.

18. **INSPECTION OF SERVICES**

- a. All services shall be subject to inspection and test by the Buyer, to the extent practicable at all times and places during the term of the Contract and during PIPO operations. All inspections and tests by the Buyer shall be made in such a manner as to not unduly delay the work.
- b. If any services performed hereunder are not in conformity with the requirements of this Contract, the Buyer shall have the right to require the Seller to perform the services again in conformity with the requirements of the Contract, at no expense to the Buyer. When the defective services performed are of such a nature that the defect cannot be corrected by re-performance of the services, the Buyer shall have the right to: (1) require the Seller to immediately take all steps necessary to ensure future performance of the services in conformity with the requirements of the Contract; (2) and reduce the Contract price to reflect the reduced value of the services performed,. If the Seller fails to perform promptly the services again or to take necessary steps to ensure future performance of the services in conformity with the requirements of the Contract, the Buyer shall have the right to either (a) by Contract or otherwise have the services performed in conformity with the Contract requirements and charge the Seller any cost incurred by the Buyer that is directly related to the performance of such service; or (b) terminate this Contract for default pursuant to the "Termination for Default" clause.
- c. Records of all inspections and tests by Seller shall be kept complete and available to Buyer during performance of this Contract and for such a longer period as may be specified elsewhere in this Contract.

19. **INSURANCE**

Before commencing work, Seller shall procure and maintain insurance of the limits and kinds as specified in the SOW and enumerated hereunder, with an insurance company rated as "Excellent" or "Superior" by A. M. Best Company. Certificates of such insurance issued by the Seller's insurance carrier shall be filed with the Buyer before commencement of work and shall set forth the following:

- a. LIMITS: The contractor shall obtain insurance for not less than the following limits:
 - i. Commercial general liability: \$1,000,000 limit
 - ii. Comprehensive automotive liability: \$1,000,000 combined single limit
 - iii. Crime/Abuse/Molestation: \$1,000,000.00 limit, each
- b. AUTOMOBILE LIABILITY INSURANCE:
 - i. Comprehensive automotive liability: \$1,000,000.00 combined single limit.
 - ii. All automobiles must be insured when the contractor is using them to do work under this agreement. The following coverages automatically qualify:
 - (a) All autos or
 - (b) All owned, non-owned, and hired autos.

- iii. If the contractor submits insurance covering only scheduled autos, then the contractor agrees to use only those insured vehicles for the work and to insure any additional vehicles before using them for the work. If the contractor submits insurance covering only scheduled autos, then the insurance coverage must also include all non-owned autos, the contractor must provide a copy of the scheduled vehicles, and the contractor must assure the Buyer in writing that any additional vehicles are covered by liability insurance at the required limits before the vehicles are used for work under this agreement.
- c. **WORKER'S COMPENSATION:** The contractor understands that all employees must be covered by worker's compensation insurance during the term of the contract with the School District.
 Workers compensation: \$100,000 each accident, \$500,000 disease-policy limit, and \$100,000 disease-each employee. This policy must be endorsed with a waiver of subrogation in favor of the School District.
- d. **ALTERNATE COVERAGE:** A combination of primary and excess/umbrella policies may be used to fulfill the insurance requirements of the section.
- e. **ADDITIONAL INSURED:** The School District must be listed as an additional insured in the contractor's commercial general liability policy.
- f. **CERTIFICATE OF INSURANCE:** Before starting work, the contractor will provide a certificate of insurance in a form acceptable to the School District showing that the contractor has the required insurance coverage.
- g. **CANCELLATION:** The School District must receive notice if the contractor's insurance is going to be canceled, not renewed, or changed in some important way. The certificate of insurance must say that the insurer will notify the School District at least 30 days before the insurer cancels, refuses to renew, or materially changes the coverage.
- h. **INCREASED COVERAGE:** During the contract term, the School District might require higher limits of insurance than those listed in this section. If the School District requires such insurance, and the insurer raises its premium as a result of higher limits, then the Borough will pay the contractor the difference between the old and the new premiums.
- i. Certificates of Insurance shall be issued to: Fairbanks North Star Borough and School District

P.O. Box 71267
Fairbanks, AK 99707

20. **LAWS, ORDINANCES, RULES & REGULATIONS**

The Seller shall comply with all applicable laws, ordinances, rules and regulations including Federal, State, and Municipal authorities and departments relating to or affecting the work hereunder or any part thereof, and shall secure and obtain any and all permits, licenses and consents as may be necessary in connection therewith. The Seller agrees to indemnify and hold harmless the Buyer from and against any and all liability or consequential damage, including but not limited to, any fines, penalties, or other corrective measures the School District may suffer resulting from any violation by the contractor of such laws, ordinances, rules, and regulations.

The Contractor and its employees shall refrain from the use of alcohol, drugs, marijuana, tobacco or nicotine, including any smoking, electronic cigarette, or vapor device while on School District property. Tobacco is defined as tobacco and nicotine in any form as well as nicotine delivery devices, such as, but not limited to, electronic cigarettes and vapor pens, but excludes nicotine replacement therapy products approved by the U.S. Food and Drug Administration for the purpose of smoking/nicotine cessation.

21. **MODIFICATION OF ORDER**

This Order contains all the agreements and conditions of sale and no course of dealing or usage of the trade shall be applicable unless expressly incorporated in this Order. The terms and conditions contained in this

Order may not be added to, modified, superseded or otherwise altered except by a written modification signed by an authorized representative of the Buyer's Purchasing Department and delivered by the Buyer to the Seller. Each delivery shall be deemed to be only upon the terms and conditions contained in this Order notwithstanding any terms and conditions that may be contained in any acknowledgment, invoice or other form of the Seller, and notwithstanding the Buyer's act of accepting or paying for any delivery or similar act of the Buyer.

22. **NO WAIVER OF CONDITIONS**

The Buyer's failure to insist upon strict compliance shall not be deemed to be a waiver of any right, and waiver of a right under this Order shall not constitute a waiver of any other right or waiver of any other default under this Order.

23. **NON-DISCRIMINATION**

The Fairbanks North Star Borough School District and all covered subcontractors shall abide by the requirements of 41 CFR §§ 60-1.4(a), 29 CFR Part 741, Appendix A to Subpart A, 60-300.5(a) and 60-741.5(a). These regulations prohibit discrimination against qualified individuals based on their status as protected veterans or individuals with disabilities, and prohibit discrimination against all individuals based on their race, color, religion, sex, or national origin. Moreover, these regulations require that covered prime contractors and subcontractors take affirmative action to employ and advance in employment individuals without regard to race, color, religion, sex, national origin, protected veteran status or disability.

The Seller shall comply with the applicable provisions of the Federal Civil Rights Act of 1964 and all amendments thereto, and the Equal Employment Opportunity Act and all amendments thereto, the FNSB School Board Policy, article 441, and all regulations issued thereunder by the Federal and State governments. If the contractor fails to comply with such acts and regulations, the School District shall have the right to immediately terminate this contract.

24. **NOTICE TO THE BUYER OF LABOR DISPUTES**

- a. Whenever the Seller has knowledge that any actual or potential labor dispute is delaying or threatens to delay the timely performance of this Contract, the Seller shall immediately give notice thereof, including all relevant information with respect thereto, to the Buyer.
- b. The Seller shall insert the substance of this clause, including this paragraph, in any subcontracts hereunder. Each such subcontract shall provide that in the event that its timely performance is delayed or threatened by delay by any actual or potential labor dispute, the subcontractor shall immediately notify the Seller of all relevant information with respect to such dispute.

25. **OPERATION AND STORAGE AREAS**

All operation of the Seller, including storage of materials, shall be confined to areas authorized or approved by the Buyer. No unauthorized or unwarranted entry upon, passage through, or storage or disposal of materials, shall be made upon other premises. The Seller shall hold and save the Buyer, its employees, officers and agents, free and harmless from liability of any nature of kind arising from any use, trespass or damage incurred by Seller's operations on premises of third persons.

26. **OTHER CONTRACTS**

The Buyer may undertake or award other contracts for additional work, and the Seller shall fully cooperate with such other contractors and Buyer's employees and carefully fit its own work to such additional work as may be contracted for by the Buyer. The Seller shall not commit or permit any act which will interfere with the performance of work by any other contractor or by Buyer's employees.

27. **PERMITS AND RESPONSIBILITIES**

Without additional expense to the Buyer, the Seller shall be responsible for obtaining any necessary licenses and permits, and for complying with all applicable laws, codes, and regulations, in connection with the prosecution of the work. The Seller shall be responsible for all damages to persons or property that

occur as a result of its fault or negligence. Seller shall take proper safety and health precautions to protect the work, employees of the Buyer and Seller, the public, and the property of others.

28. **PROTECTION OF BUILDINGS, EQUIPMENT AND VEGETATION**

The Seller shall use reasonable care to avoid damaging existing buildings, structures, equipment and vegetation such as trees, shrubs and grass on the Buyer's facility. If the Seller fails to do so and damages any such buildings, structures, equipment, or vegetation, Seller shall replace or repair the damage at no expense to the Buyer as directed by the Buyer. If Seller fails or refuses to make such repair or replacement, the Seller shall be liable for the cost thereof which may be deducted by the Buyer from payments due or which may become due to the Seller.

29. **PUBLIC RELEASE OF INFORMATION**

Unless the prior written consent of the Buyer is obtained, the Seller shall not, except as may be required by law or regulations, in any manner advertise or publish or release for publication any statement or information mentioning the Buyer, or the fact that the Seller has furnished or contracted to furnish to the Buyer the services required by this Contract, or quote the opinion of any employee of Buyer.

30. **REMOVAL OF SELLER'S UNSATISFACTORY EMPLOYEES**

By written notice, the Buyer may require the Seller to remove from the work any employee the Buyer deems incompetent, careless, or otherwise objectionable.

31. **SAFETY**

- a. Seller shall be responsible for safety related to and during the performance of the work hereunder. Seller shall insure that its employees and the employees of its subcontractors are notified of and observe and abide by all safety regulations and laws including but not limited to those issued by the Buyer, and any revisions of the foregoing that may herein-after be applicable.
- b. Said laws and regulations are minimum requirements for the Seller. Seller shall take any additional precautions necessary or proper under the circumstances to prevent injury to or death of persons and/or damage to property. Compliance with such laws and regulations by the Seller, or Buyer's approval of any actions or procedures of the Seller as provided herein shall not relieve the Seller of its obligations to use due care in performing the work required under this Contract.
- c. Seller shall immediately notify Buyer of any damage to property and/or injury to, or death of, persons that occurs in connection with or is in any way related to the work. Seller shall furnish Buyer a written report of the aforesaid as soon as possible.

32. **SUPERINTENDENCE BY SELLER**

The Seller shall have a competent foreman or superintendent, satisfactory to the Buyer, on the work site at all times during the performance of work. Said foreman or superintendent shall have the authority to act for the Seller.

33. **TAXES**

Unless prohibited by law or otherwise stated to the contrary in this Contract, the Seller shall pay and has included in the price of this Contract, any Federal, State or Local Sales Tax, Transportation Tax, or other similar levy which is required to be imposed upon the work or services to be performed.

34. **TITLE AND RISK OF LOSS**

The Seller shall retain title to and risk of loss or damage to all items to be delivered hereunder until final acceptance by the Buyer at the Buyer's plant.

35. **WARRANTY OF SERVICES**

Notwithstanding inspection and acceptance by the Buyer or any provision concerning the conclusiveness thereof, the Seller warrants that all services performed under this Contract shall, at the time of acceptance, be free from effects in workmanship and conform to the requirements of this Contract. The Buyer shall give

written notice of any such defect or nonconformance to the Seller within five (5) days after date of acceptance by Buyer. Such notice shall state either (1) that the Seller shall correct or re-perform any defective or nonconforming service, or (2) that the Buyer does not require correction or re-performance. If the Seller is required to correct or re-perform, it shall be at no cost to the buyer, and any services corrected or re-performed by the Seller pursuant to this clause shall be subject to all provisions of this clause to the same extent as work initially performed. If the Seller fails or refuses to correct or re-perform, the Buyer may, by contract or otherwise, correct or replace with similar services and charge to the Seller the cost incurred to the buyer thereby or obtain an equitable adjustment in the Contract price. If the Buyer does not require correction or re-performance, the Buyer shall make an equitable adjustment in the Contract price. Except as otherwise provided herein, the bidder warrants that all articles, materials, and equipment supplied under this contract are new, conform to the specifications of this contract, to be of merchantable quality, are fit for the use intended, and are free from defects in materials and workmanship. The District requires that successful bidders honor guarantees and warranties offered by the manufacturer.

36. **TERMINATION FOR CONVENIENCE**

The School District may terminate a contract, in whole or in part, without showing cause upon giving written notice to the Contractor. The School District shall pay all reasonable costs incurred by the Contractor up to the date of termination. The Contractor will not be reimbursed for any anticipatory profits which have not been earned up to the date of termination.

37. **TERMINATION FOR DEFAULT**

If the contractor refuses or fails to prosecute the work or any separate part, with the diligence that will ensure its completion within the time specified in this contract including any extension, or fails to complete the work within this time, the School District may, by written notice to the Contractor, terminate the right to proceed with the work (or the separable part of the work) that has been delayed. In this event, the School District may take over the work and complete it by contract or otherwise, and may take possession of and use any materials, appliances, and plant on the work site necessary for completing the work. The Contractor and its sureties shall be liable for any damage to the School District resulting from the Contractor's refusal or failure to complete the work within the specified time, whether or not the Contractor's right to proceed with the work is terminated. This liability includes any increased costs incurred by the School District in completing the work.

38. **TERMINATION CONTINGENCY**

If the Buyer terminates this Contract in whole or in part under the "Default", "Termination for Convenience", "Price Escalation/de-escalation" clauses, or any other reason authorized by the School Board Procurement Policy or contained herein, the Buyer may cover by procurement of items or services similar to those terminated, upon such terms and in such a manner as the Buyer may deem appropriate.

39. **STRICT LOYALTY**

The Contractor and its employees shall avoid all circumstances and actions which would place the Contractor in a position of divided loyalty with respect to the obligations undertaken under this Contract. If any funds other than Federal appropriated funds have been paid or will be paid to any person for influencing or attempting to influence an officer or employee of any agency, a Member of Congress, an officer or employee of Congress, or an employee of a Member of Congress in connection with a Federal grant or cooperative agreement, the Contractor shall complete and submit Standard Form (SF-LLL), "Disclosure Form to Report Lobbying," in accordance with the instructions therein.

40. **DEBARMENT**

The Contractor certifies that neither it nor its principals are presently debarred, suspended, proposed for debarment, declared ineligible, or voluntarily excluded from participation in the contract by any governmental department or agency. This certification represents a recurring certification made at the time any order is placed under this Contract.

EXHIBIT “C” – Bid Schedule

TABLE OF CONTENTS

| | |
|---------------------------|----|
| Clause | |
| BID SCHEDULE | 46 |
| INVOICING | 46 |
| NON-COLLUSION CERTIFICATE | 47 |
| AMENDMENT ACKNOWLEDGEMENT | 48 |

1. BID SCHEDULE

Bids must be received by: June 2, 2023 - 4:00 PM

Period of Performance: Work may begin as soon as possible (upon execution of contract), and must be completed no later than 7/31/24.

| Line | Item Number | Description | Unit | Qty |
|------|-------------|--|-------------|-----|
| 1 | 988-73-00 | Weller Playground Equipment installation | Unit Price: | 1 |

Base Bid Amount \$ _____

2. INVOICING

The Seller shall invoice monthly for services performed. Payment will be made within thirty (30) days after approval of the invoice by the Contract Administrator. Invoices shall specify:

- a. Project Name
- b. Owner’s Project number
- c. Name of Contractor
- d. Purchase Order number
- e. Date of submittal
- f. Application for payment number
- g. Breakdown of the Contract Sum in enough detail to facilitate continued evaluation of Application for Payment and progress reports.

3. NON-COLLUSION CERTIFICATE

THE OFFEROR CERTIFIES THAT -

- a. THE PRICES IN THIS OFFER HAVE BEEN ARRIVED AT INDEPENDENTLY, WITHOUT, FOR THE PURPOSE OF RESTRICTING COMPETITION, ANY CONSULTATION, COMMUNICATION, OR AGREEMENT WITH ANY OTHER OFFEROR OR COMPETITOR RELATING TO (I) THOSE PRICES, (II) THE INTENTION TO SUBMIT AN OFFER, OR (III) THE METHODS OR FACTORS USED TO CALCULATE THE PRICES OFFERED,
- b. THE PRICES IN THIS OFFER HAVE NOT AND WILL NOT BE KNOWINGLY DISCLOSED BY THE OFFEROR, DIRECTLY OR INDIRECTLY, TO ANY OTHER OFFEROR OR COMPETITOR BEFORE CONTRACT AWARD UNLESS OTHERWISE REQUIRED BY LAW, AND
- c. NO ATTEMPT HAS BEEN MADE OR WILL BE MADE BY THE OFFEROR TO INDUCE ANY OTHER CONCERN TO SUBMIT OR NOT TO SUBMIT AN OFFER FOR THE PURPOSE OF RESTRICTING COMPETITION.

(Signature)

(Title)

(Business Name)

(Date)

Amendment Acknowledgement

OFFER

The undersigned agrees, if this offer is accepted, to furnish any or all items upon which prices are offered at the price entered on this schedule, delivered at the designated point, within the time specified.

The offeror certifies that:

1. The prices in this offer have been arrived at independently, without, for the purpose of restricting competition, any consultation, communication, or agreement with any other offeror or competitor relating to (i) those prices, (ii) the intention to submit an offer, or (iii) the methods or factors used to calculate the prices offered,
2. The prices in this offer have not and will not be knowingly disclosed by the offeror, directly or indirectly, to any other offeror or competitor before contract award unless otherwise authorized by law, and
3. No attempt has been made or will be made by the offeror to induce any concern to submit or not to submit an offer for the purpose of restricting competition.

Acknowledgment of Amendments:

Amendment No.

Date

Signature - Individual Authorized to Bind Firm

Date

Typed or Printed Name

Alaska Business License Number:

Business Name:

Mailing Address:

Business Address (Street Address):

Phone:

FAX:

E-mail Bid results to:
